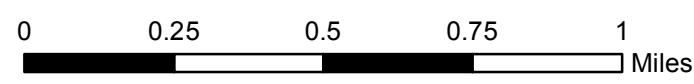


Comprehensive Bicycle Plan Existing and Future Facilities Map for The Village of Hoffman Estates



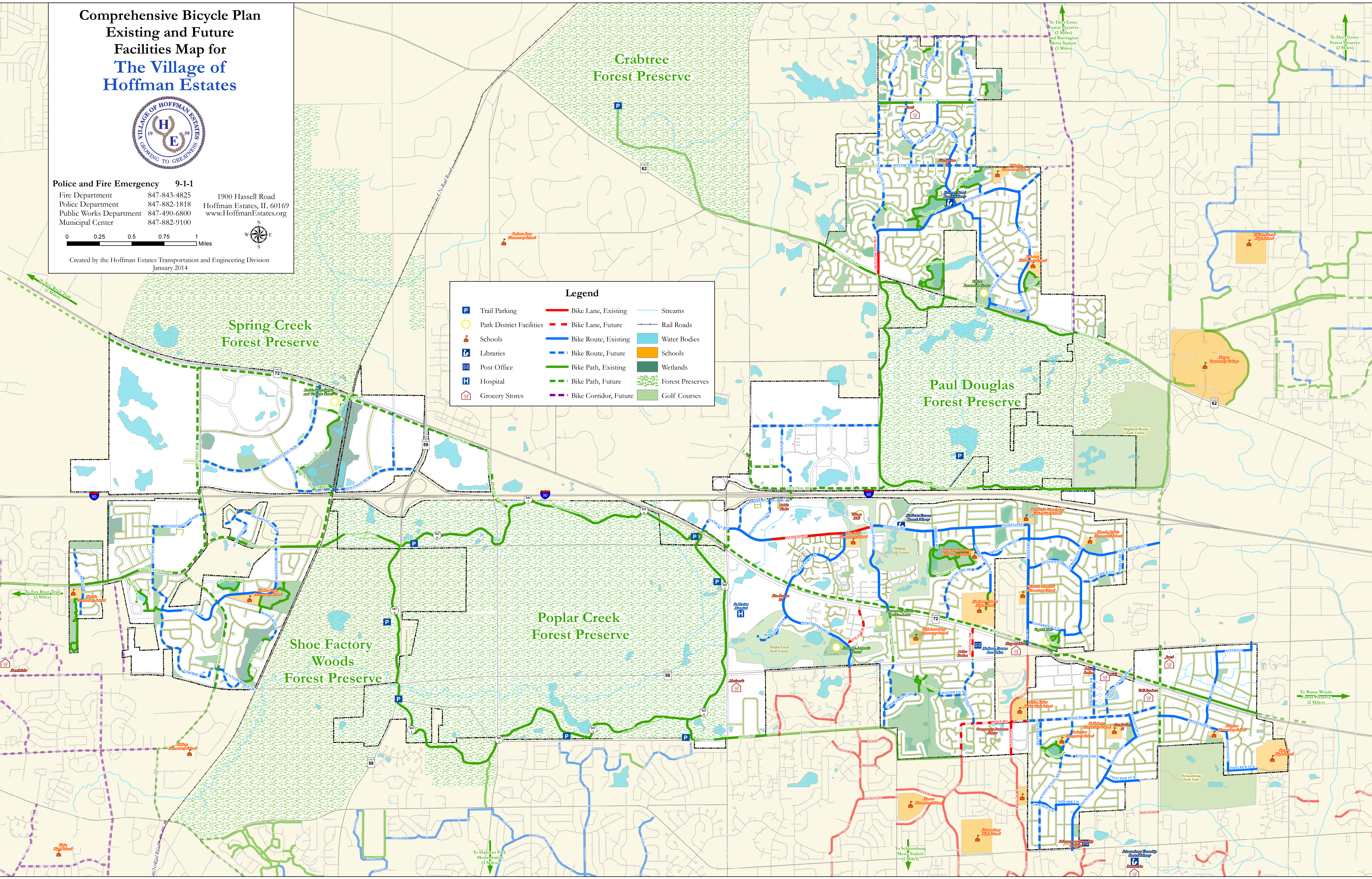
Police and Fire Emergency 9-1-1
 Fire Department 847-843-4825 1900 Hassell Road
 Police Department 847-882-1818 Hoffman Estates, IL 60169
 Public Works Department 847-490-6800 www.HoffmanEstates.org
 Municipal Center 847-882-9100



Created by the Hoffman Estates Transportation and Engineering Division
 January 2014

Legend

Trail Parking	Bike Lane, Existing	Streams
Park District Facilities	Bike Lane, Future	Rail Roads
Schools	Bike Route, Existing	Water Bodies
Libraries	Bike Route, Future	Schools
Post Office	Bike Path, Existing	Wetlands
Hospital	Bike Path, Future	Forest Preserves
Grocery Stores	Bike Corridor, Future	Golf Courses



To Fox River Trail (3 Miles)

To Fox River Trail (2 Miles)

To Hanover Park Metra Station (3 Miles)

To Schumburg Metra Station (2 Miles)

To Deer Grove Forest Preserve and Barrington Metra Station (3 Miles)

To Deer Grove Forest Preserve (2 Miles)

To Busse Woods Forest Preserve (2 Miles)