

# AGENDA

*Village of Hoffman Estates  
First Meeting of the Month  
Village Board of Trustees*

*1900 Hassell Road  
Hoffman Estates, IL 60169  
847-882-9100*

---

**Board Room**

**7:00 p.m.**

**February 4, 2013**

---

1. **CALL TO ORDER/ROLL CALL**
2. **PLEDGE OF ALLEGIANCE TO THE FLAG**
3. **RECOGNITION OF AUDIENCE**
4. **APPROVAL OF MINUTES – January 21, 2013**
5. **CONSENT AGENDA/OMNIBUS VOTE (Roll Call Vote)**  
*(All items under the Consent Agenda are considered to be routine in nature and will be enacted by one motion. There will be no separate discussion of these items unless a Trustee so requests. In that event, the discussion will be the first item of business after approval of the Consent Agenda.)*
  - A. Approval of Agenda
  - B. Approval of the schedule of bills for February 4, 2013 - \$1,552,291.90.
  - C. Request Board approval of an ordinance granting a variation to premises at 405 Azalea Lane, Hoffman Estates.
  - D. Request Board approval of a resolution for construction on State highways.
  - E. Request Board approval of a resolution setting forth prevailing hourly wage rate paid to employees engaged in work awarded under public contract.
  - F. Request Board approval of the Village of Hoffman Estates' Sustainability Plan.
  - G. Request Board approval of an IDOT resolution to appropriate Motor Fuel Tax funds for 2013 sidewalk/curb replacement program and traffic signal maintenance and Opticom repairs, in an amount not to exceed \$142,500.
  - H. Request Board authorization of Change Order #1 in the amount of \$5,000.30 to the contract with Hey and Associates for the Hassell Road culvert design.
  - I. Request Board authorization to extend the 2011 contract for 2013 roadway pavement markings to Preform Traffic Control Systems, Ltd., Elk Grove Village, IL (low bid) in an amount not to exceed \$44,000.
  - J. Request Board authorization to:
    - 1) waive formal bidding; and
    - 2) purchase Neptune meters from Water Resources, Inc., Elgin, IL (sole supplier) at 2013 unit prices, in an amount not to exceed \$128,500.
  - K. Request Board authorization to award a two-year towing contract, with an optional third year, to Redmon's Towing, Schaumburg, IL.
  - L. Request Board authorization to enter into a lease-to-own contract with De Lage Landen Public Finance LLC for the purchase of 21 Arbitrator 360 camera systems and related equipment from CDS Office Technologies.
  - M. Request Board authorization to waive all inspection fees and select license fees for the 2013 Northwest Fourth-Fest.

5. **CONSENT AGENDA/OMNIBUS VOTE – Continued**

- N. Request Board authorization to award contract for stage, sound, lights and backline equipment for the 2013 Northwest Fourth-Fest to SCS Productions, Inc., in an amount not to exceed \$27,245.
- O. Request Board authorization for Use of Social Media and additional services to increase communication opportunities between the Police Department and the community in an amount of \$2,215 for the first year and \$2,015 in subsequent years, and to enter into an annual service agreement with Leads Online in the amount of \$4,528 per year.
- P. Request Board authorization to:
  - 1) waive formal bidding; and
  - 2) award contract for an ongoing replacement program for the purchase of 11 ruggedized laptop computers and accessories to CDS Office Technologies, Inc. per Illinois State Master Contract CMS8291640 for use in Police Department vehicles in an amount not to exceed \$43,484.
- Q. Request Board authorization to:
  - 1) waive formal bidding; and
  - 2) award contract to Dell Computers, Inc. for the purchase of replacement personal computers in an amount not to exceed \$75,000.

6. **REPORTS**A. **President's Report**

... Proclamation(s)

- Mark Mueller Day (20 Years Service)
- Daniel Grobe Day (15 Years Service)
- Daniel Kurzawinski Day (15 Years Service)
- Mark Lauder Day (15 Years Service)
- Kenneth Sandacz Day (15 Years Service)
- Suzanne Lessen Day (10 Years Service)
- Eating Disorders Awareness Month

B. **Trustee Comments**C. **Village Manager's Report**D. **Village Clerk's Report**7. **ADDITIONAL BUSINESS** (*All other new business; those items not recommended unanimously by the Committee*)

- A. Request Board authorization to award contract for the 2013 Northwest Fourth-Fest fireworks display to Melrose Pyrotechnics, Inc., Kingsbury, IN, in an amount not to exceed \$39,000.
- B. Request Board authorization to extend 2011 contract for 2013 street sweeping, inclusive of all associated costs including hauling of debris, to K. Hoving Clean Sweep, West Chicago, IL, in an amount not to exceed \$76,230.

8. **ADJOURNMENT -- Executive Session – Review of Closed Session Minutes (5 ILCS 120/2-(c)-(21))**

**MEETING:** HOFFMAN ESTATES VILLAGE BOARD  
**DATE:** JANUARY 21, 2013  
**PLACE:** COUNCIL CHAMBERS  
MUNICIPAL BUILDING COMPLEX  
1900 HASSELL ROAD  
HOFFMAN ESTATES, ILLINOIS

**1. CALL TO ORDER:**

Village President William McLeod called the meeting to order at 7:00 p.m. The Village Clerk called the roll. Trustees present: Karen Mills, Ray Kincaid, Jackie Green, Anna Newell, Gary Pilafas, Gary Stanton.

A quorum was present.

**ADMINISTRATIVE PERSONNEL PRESENT:**

D. O'Malley, Deputy Village Manager  
A. Janura, Corporation Counsel  
P. Cross, Asst. Corporation Counsel  
M. Koplin, Asst. Village Manager-Development Services  
B. Gorvett, Fire Chief  
M. Hish, Police Chief  
R. Musiala, Finance Director  
A. Garner, H&HS Director  
P. Seger, HRM Director  
J. Nebel, PW Director  
J. Jorian, Deputy Fire Chief  
B. Anderson, CATV Coordinator  
T. Messino, General Government Intern  
B. Gibbs, SCA General Manager  
Y. Ahmed, Levy  
E. Kerous, Director of Operations-Mayor and the Board

**2. PLEDGE OF ALLEGIANCE TO THE FLAG:**

The Pledge was led by Trustee Mills.

**3. RECOGNITION OF AUDIENCE:**

No one wished to be recognized.

**4. APPROVAL OF MINUTES:**

Motion by Trustee Kincaid, seconded by Trustee Green, to approve Item 4 with the correction to Trustee Kincaid's Trustee Comments.

Approval of Minutes  
Minutes from January 14, 2013.

Roll Call:  
Aye: Mills, Kincaid, Green, Newell, Pilafas, Stanton

Nay:

Mayor McLeod voted aye.

Motion carried.

**5. CONSENT AGENDA/OMNIBUS VOTE:**

Motion by Trustee Mills, seconded by Trustee Pilafas, to approve Item 5.A.

**5.A. Approval of Agenda**

Roll Call:

Aye: Mills, Kincaid, Green, Newell, Pilafas, Stanton

Nay:

Mayor McLeod voted aye.

Motion carried.

Motion by Trustee Mills, seconded by Trustee Pilafas, to approve Item 5.B.

**5.B. Approval of the schedule of bills for January 21, 2013: \$602,865.97.**

Roll Call:

Aye: Mills, Kincaid, Green, Newell, Pilafas, Stanton

Nay:

Mayor McLeod voted aye.

Motion carried.

Motion by Trustee Mills, seconded by Trustee Pilafas, to approve Item 5.C.

**5.C. Request Board approval of Ordinance No. 4353-2013 adopting the Village of Hoffman Estates' Comprehensive Road Improvement Plan.**

Roll Call:

Aye: Mills, Kincaid, Green, Newell, Pilafas, Stanton

Nay:

Mayor McLeod voted aye.

Motion carried.

Motion by Trustee Mills, seconded by Trustee Pilafas, to approve Item 5.D.

**5.D. Request Board approval of Ordinance No. 4354-2013 amending the Village of Hoffman Estates' Fair Share Road Improvement Impact Fee Ordinance.**

Roll Call:

Aye: Mills, Kincaid, Green, Newell, Pilafas, Stanton

Nay:

Mayor McLeod voted aye.

Motion carried.

Motion by Trustee Mills, seconded by Trustee Pilafas, to approve Item 5.E.

**5.E. Request Board authorization of an EDA contract for Prairie Stone public road improvements in an amount not to exceed \$83,695.**

Roll Call:

Aye: Mills, Kincaid, Green, Newell, Pilafas, Stanton

Nay:

Mayor McLeod voted aye.

Motion carried.

**6. REPORTS:**

**6.A. President's Report**

1) Swearings-In

Michael Czarnecki – Firefighter

Mayor McLeod swore Michael Czarnecki into the position of Firefighter/Paramedic. Firefighter Czarnecki introduced his family and was congratulated by the Board.

Michael Petrucci – Firefighter

Mayor McLeod swore Michael Petrucci into the position of Firefighter/Paramedic. Firefighter Petrucci introduced his family and was congratulated by the Board.

Taylor McIntyre – Firefighter

Mayor McLeod swore Taylor McIntyre into the position of Firefighter/Paramedic. Firefighter McIntyre introduced his family and was congratulated by the Board.

Peter Behnke – Firefighter

Mayor McLeod swore Peter Behnke into the position of Firefighter/Paramedic. Firefighter Behnke introduced his family and was congratulated by the Board.

2) Proclamations

Trustee Mills read the following proclamation:

Motion by Trustee Kincaid, seconded by Trustee Pilafas, to concur with the proclamation proclaiming Sunday, February 3, 2013 as Kathy Redelmann Day. Voice vote taken. All ayes. Motion carried.

Mr. Koplín accepted the proclamation for Mrs. Redelmann.

3) Presentation(s)

Muscular Dystrophy Association – “Fill the Boot” Drive

A representative from the Muscular Dystrophy Association, Amanda, thanked the Hoffman Estates Firefighter Union for the \$5,000 donation from the “Fill the Boot” Drive. She thanked Chief Gorvett, Mayor McLeod, the Board and the Village for allowing the Union to participate in the drive.

4) Appointments

Appointment of Chairperson of Sustainability Commission

Motion by Trustee Pilafas, seconded by Trustee Green, to accept the appointment of Eric Marscin and Sheila Schwartz as Co-Chairpersons of the Sustainability Commission. Voice vote taken. All ayes. Motion carried.

Motion by Trustee Pilafas, seconded by Trustee Mills, to accept the appointment of Beth Reed to the Cultural Awareness Commission. Voice vote taken. All ayes. Motion carried.

Motion by Trustee Mills, seconded by Trustee Pilafas, to accept the resignation with regrets of Bev Grochowski from the Commission for Senior Citizens. Voice vote taken. All ayes. Motion carried.

Mayor McLeod stated that he attended the Chamber Business After Hours at the Hilton Garden Inn, a Big 10 meeting, the MLK Dinner, Coffee with the Board, the MLK Breakfast. He thanked the department heads, the Police and Fire Department Honor Guard, the Cultural Awareness Commission and the Sears Holdings Choir for their parts in the breakfast. He presented Joyce Horiuchi an award for her twenty years of service on the Cultural Awareness Commission and he wished Clerk Romanoff a Happy Birthday.

#### **6.B. Trustee Comments**

Trustee Green stated that she attended the MLK Dinner, Coffee with the Board, wished the Clerk a Happy Birthday and welcomed the new Firefighters.

Trustee Newell stated that she attended the MLK Dinner, Coffee with the Board, welcomed the new Firefighters and wished the Clerk a Happy Birthday.

Trustee Pilafas wished the Clerk a Happy Birthday, welcomed the new Firefighters and stated that he attended the MLK Breakfast and the Chicago Soul game.

Trustee Mills stated that she attended the MLK Dinner and Breakfast, thanked the Cultural Awareness Commission and management team for the breakfast, she sent her condolences to Manager Norris on the loss of his father, wished the Clerk a Happy Birthday and congratulated the Firefighters.

Trustee Kincaid sent his condolences to Manager Norris, stated that he attended the Chamber Business After Hours, a government relations meeting, Coffee with the Board, the MLK Breakfast and congratulated the new Firefighters.

Trustee Stanton thanked the Cultural Awareness Commission and the management team for the MLK Breakfast, stated that he attended the Coffee with the Board and the MLK Dinner.

#### **6.C. Village Manager's Report**

Mr. O'Malley had no report.

#### **6.D. Village Clerk's Report**

The Village Clerk thanked everyone for their birthday wishes.

#### **6.E. Treasurer's Report**

Motion by Trustee Pilafas, seconded by Trustee Green, to approve Item 6.E.

Mrs. Musiala stated that during the month of December 2012 cash receipts and transfers-in exceeded cash disbursements and transfers-out for the operating funds by \$334,642. After including these receipts and disbursements, the balance of cash and investments for the operating funds is \$20.2 million. For all of the

Village funds, cash disbursements and transfers-out exceeded cash receipts and transfers-in by \$4,205,359, primarily due to the 2011 EDA TIF Distribution. Overall, the total for cash and investments for all funds decreased to \$156.1 million.

Roll Call:

Aye: Mills, Kincaid, Green, Newell, Pilafas, Stanton

Nay:

Mayor McLeod voted aye.

Motion carried.

**7. PLANNING & ZONING COMMISSION REPORT (Chairperson Combs):**

Motion by Trustee Mills, seconded by Trustee Pilafas, to concur with the Planning & Zoning Commission and approve the petitioners' request.

7.A. Request by Jeff Whyte for a 5 foot side yard setback variation from Section 9-5-2-D-5 to allow an existing house, room addition, and attached garage addition to be set back 10 feet from the east side lot line instead of the minimum required 15 feet at 405 Azalea Lane.

Roll Call:

Aye: Mills, Kincaid, Green, Newell, Pilafas, Stanton

Nay:

Mayor McLeod voted aye.

Motion carried.

**8. ADDITIONAL BUSINESS:**

There was no Additional Business.

**9. ADJOURNMENT:**

Motion by Trustee Pilafas, seconded by Trustee Green, to adjourn the meeting. Time 7:27 p.m.

Roll Call:

Aye: Mills, Kincaid, Green, Newell, Pilafas, Stanton

Nay:

Mayor McLeod voted aye.

Motion carried.

---

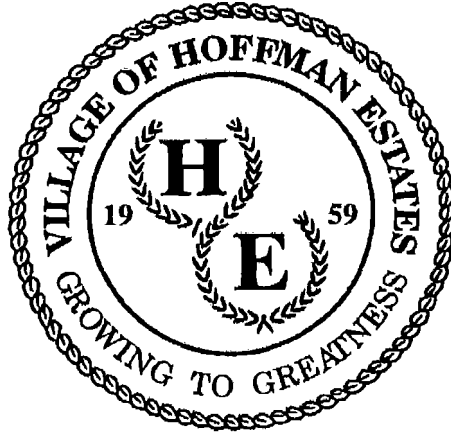
Bev Romanoff  
Village Clerk

Date Approved

The Village of Hoffman Estates complies with the Americans with Disabilities Act (ADA). For accessibility assistance, call the ADA Coordinator at 847/882-9100.

**CONSENT AGENDA/  
OMNIBUS VOTE**





### BILL LIST SUMMARY

BILL LIST AS OF 02/4/2013	\$ 374,520.11
MANUAL CHECK REGISTER	\$ 8,396.15
UNIFORM ALLOWANCE FIRE 2/01/2013	\$ 24,250.00
PAYROLL 1/25/2013	\$ <u>1,145,125.64</u>
TOTAL	\$ 1,552,291.90

# VILLAGE OF HOFFMAN ESTATES

February 4, 2013

ACCOUNT	YEAR	VENDOR	DESCRIPTION	AMOUNT
01 0301	13	OFFICE DEPOT	OFFICE SUPPLIES	\$12.16
01 0302	13	ACME TRUCK BRAKE & SUPPLY CO.	VEHICLE REPAIR PARTS	\$194.70
01 0302	13	ANALYST INC.	PRE-PAID ENGINE OIL SAMPL	\$1,016.98
01 0302	13	BRETT EQUIPMENT CORP.	VARIOUS SUPPLIES	\$14.28
01 0302	13	CARQUEST AUTO PARTS	STOCK REPAIR PARTS	\$214.40
01 0302	13	CARQUEST AUTO PARTS	VEHICLE REPAIR PARTS	\$361.80
01 0302	13	CHICAGO INTERNATIONAL TRUCKS, LLC	VEHICLE REPAIR PARTS	\$11.97
01 0302	13	LEACH ENTERPRISES INC	STOCK REPAIR PARTS	\$94.73
01 0302	13	MONROE TRUCK EQUIPMENT	REPAIR PARTS	\$362.08
01 0302	13	O'REILLY AUTO PARTS	VEHICLE REPAIR PARTS	\$75.46
01 0302	13	SPRING HILL FORD	VEHICLE REPAIR PARTS	\$77.77
01 0302	13	WHOLESALE DIRECT INC	STOCK REPAIR PARTS	\$136.42
01 0303	13	CHICAGO OFFICE TECHNOLOGY GROUP	COPIES	\$301.93
01 1214	13	NCPERS-IL IMRF	DED:2030 IMRF LIFE	\$896.00
01 1218	13	INT'L BROTHERHOOD TEAMSTERS LCL 700	DED:2034 PW-DUES	\$3,095.00
01 1218	13	METROPOLITAN ALLIANCE OF POLICE	DED:2033 MAP 96	\$2,325.00
01 1218	13	METROPOLITAN ALLIANCE OF POLICE	DED:2038 MAP 97	\$279.00
01 1222	13	AFLAC	DED:1027 AFLAC-INS	\$3,960.13
01 1223	13	AFLAC	DED:2027 AFL-AF TAX	\$737.72
01 1226	13	PRE PAID LEGAL SERVICE INC	DED:2035 LEGAL	\$1,795.00
01 1239	13	JOHN HANCOCK LIFE INSURANCE CO.	DED:2040 LTC INS	\$263.66
01 1458	13	INTOXIMETERS INC	MOUTH PIECE	\$56.95
01 1458	13	KUSTOM SIGNALS INC	RADAR REPAIRS	\$145.50
01 1458	13	LASER TECHNOLOGY INC.	REPAIR PARTS	\$136.00
<b>TOTAL GENERAL-ASSETS &amp; LIABILITIES</b>				<b>\$16,564.64</b>
01000010 3104	12	COHEN, SALK & HUARD	REAL ESTATE STAMP REFUND	\$1,530.00
01000011 3202	13	JENNIFER HEIM	RFD OF OVER PYMT BUS LIC	\$12.50
01000011 3202	13	KBC SERVICES INC	OVER PYMT BUS LIC	\$12.50
01000013 3405	12	ARSAL HUSSAINI	PARAMEDIC REFUND	\$10.00
01000013 3405	12	BENEFIT ADMINSTRATIVE SYSTEM	PARAMEDIC REFUND	\$259.01
01000013 3405	12	EVA VARGA	PARAMEDIC REFUND	\$108.96
<b>TOTAL GENERAL-REVENUE ACCOUNTS</b>				<b>\$1,932.97</b>
01101122 4301	12	ILL STATE TOLL HWY AUTHORITY	MAYOR'S CAR	\$7.35
<b>TOTAL LEGISLATIVE</b>				<b>\$7.35</b>
01101323 4404	13	MUNICIPAL CODE CORP.	ORDINANCES	\$2,559.30
01101324 4567	12	ARNSTEIN & LEHR LLP	PROF SERVICES	\$14,299.20
01101324 4567	13	MCCORKLE COURT REPORTERS, INC	ADMIN SERVICES	\$159.75
<b>TOTAL LEGAL</b>				<b>\$17,018.25</b>
01101423 4401	13	FEDERAL EXPRESS CORP	SHIPPING	\$21.33
01101423 4401	13	UPS SHIPPING CHARGES	SHIPPING	\$9.81
01101423 4402	13	OFFICE DEPOT	OFFICE SUPPLIES	\$19.02
01101424 4542	12	TREASURY MANAGEMENT SERVICES	MGMT SERVICES	\$47.00
<b>TOTAL FINANCE</b>				<b>\$97.16</b>

# VILLAGE OF HOFFMAN ESTATES

February 4, 2013

ACCOUNT	YEAR	VENDOR	DESCRIPTION	AMOUNT
01101622 4301	13	IPELRA	LAW SEMINAR	\$180.00
01101623 4405	13	SCHAUMBURG TOWNSHIP PANTRY	B PUGH ANNIV DONATION	\$20.00
01101623 4414	12	JERSEYS PIZZA & GRILL	JIM CAMPBELL RETIREMENT	\$180.90
01101624 4507	13	DISCOVERY BENEFITS	FSA MONTHLY	\$646.80
01101624 4507	13	ICMA RETIREMENT CORPORATION	TRUST PASSIVE AGREE	\$850.00
<b>TOTAL HUMAN RESOURCES</b>				<b>\$1,877.70</b>
01102524 4507	13	VISION INTERNET PROVIDERS INC	WEB HOSTING FEE JAN	\$200.00
<b>TOTAL COMMUNICATIONS</b>				<b>\$200.00</b>
01106222 4301	12	ILL STATE TOLL HWY AUTHORITY	POOL CAR #96	\$0.45
01106222 4303	13	ILLINOIS NATOA	ANNUAL DUES	\$75.00
01106222 4303	13	NATOA	ANNUAL DUES	\$550.00
<b>TOTAL CABLE TELEVISION</b>				<b>\$625.45</b>
<b>GENERAL GOVERNMENT</b>				<b>\$19,825.91</b>
01201222 4303	13	INT'L ASSOC OF CHIEFS OF POLICE	MEMBERSHIP HISH	\$120.00
01201222 4303	13	INT'L ASSOC OF CHIEFS OF POLICE	MEMBERSHIP TED BOS	\$120.00
01201223 4402	13	OFFICE DEPOT	OFFICE SUPPLIES	\$63.15
01201223 4405	13	OFFICE DEPOT	OFFICE SUPPLIES	\$70.14
01201223 4417	12	MCDONALDS BEAR ESTATES #1, LLC	IMMATE MEALS	\$193.73
01201223 4422	13	VICTOR E. PUSCAS JR	HEARING OFFICER	\$331.00
01201224 4507	13	CHERYL AXLEY	PROFESSIONAL SERVICES	\$400.00
01201224 4507	13	JOHN J SCOTILLO	ADMIN FEES HEARINGS	\$400.00
<b>TOTAL ADMINISTRATIVE</b>				<b>\$1,698.02</b>
01202122 4303	13	NORTHERN IL POLICE ALARM SYSTEMS	EMERGENCY TEAM ASSESS	\$3,300.00
01202122 4303	13	NORTHERN IL POLICE ALARM SYSTEMS	MEMBERSHIP MAY-APR13	\$400.00
01202122 4303	13	NORTHERN IL POLICE ALARM SYSTEMS	MOBILE FIELD MAY 2012	\$675.00
01202124 4509	13	NORTHERN IL POLICE ALARM SYSTEMS	MOBILE FIELD MAY 2012	\$130.00
<b>TOTAL PATROL &amp; RESPONSE</b>				<b>\$4,505.00</b>
01202824 4509	13	U.S. BANK EQUIPMENT FINANCE	SOFTWARE SERVICES	\$2,117.15
<b>TOTAL RECORDS</b>				<b>\$2,117.15</b>
<b>POLICE</b>				<b>\$8,320.17</b>
01301222 4303	13	ILLINOIS FIRE CHIEFS' ASSOCIATION	2013 MEMBERSHIP	\$450.00
01301222 4303	13	METROPOLITAN FIRE CHIEFS ASSOCIATIO	2013 ACTIVE MEMBERSHIP	\$40.00
<b>TOTAL ADMINISTRATIVE</b>				<b>\$490.00</b>
01303122 4304	13	DLS PRINTING & PROMOTIONS	EMBROIDERY	\$28.75
01303122 4304	13	KALE UNIFORMS INC	UNIFORMS	\$197.27
01303122 4304	13	UNIFORMITY INC	SAFETY WEAR	\$311.85
01303122 4304.16	13	MUNICIPAL EMERGENCY SERVICES	VARIOUS PARTS	\$397.34
01303123 4414.14	13	ELGIN PAPER COMPANY	SAFETY SUPPLIES	\$303.00
01303124 4510.11	13	AIR ONE EQUIPMENT INC	SCUBA GEAR	\$52.50
01303124 4510.15	13	MOTOROLA	RADIO REPAIRS	\$540.00
01303124 4510.17	12	DJS SCUBA LOCKER INC	REPAIR PARTS	\$1,016.06
01303124 4542	13	LEAF	COPIER LEASING	\$229.97
01303124 4542	13	PAUL CONWAY SHIELDS	VARIOUS SUPPLIES	\$2,188.39
01303124 4542.15	12	NORTHWEST COMMUNITY EMS DEPT.	AMBULANCE RUNS	\$980.49
01303124 4579	13	ALEXIAN BROTHERS CORPORATE HEALTH	EMPLOYEE PHYSICALS	\$39.00
<b>TOTAL SUPPRESSION</b>				<b>\$6,284.62</b>

# VILLAGE OF HOFFMAN ESTATES

February 4, 2013

ACCOUNT	YEAR	VENDOR	DESCRIPTION	AMOUNT
01303222 4301	12	ILL STATE TOLL HWY AUTHORITY	POOL CAR #96	\$4.60
01303223 4419	13	EMERGENCY MEDICAL PRODUCTS	MEDICAL SUPPLIES	\$121.76
01303223 4419	13	GLOVE PLANET	MEDICAL SUPPLIES	\$444.00
01303223 4419	13	PORT SUPPLY	VARIOUS SUPPLIES	\$271.87
<b>TOTAL EMERGENCY MEDICAL SERVICES</b>				<b>\$842.23</b>
01303322 4303	12	ILLINOIS FIRE INSPECTORS ASSOC	YEARLY MEMBERSHIP	\$95.00
01303324 4507	12	TYCO INTEGRATED SECURITY	SERVICE	\$90.00
01303324 4507	13	AT & T	253-9330	\$52.64
01303324 4507	13	TYCO INTEGRATED SECURITY	FEB MONITORING	\$135.00
01303325 4628	12	TYCO INTEGRATED SECURITY	KELTRON RADIO ALARM UNITS	\$12,570.00
<b>TOTAL PREVENTION</b>				<b>\$12,942.64</b>
01303523 4412	13	CASE LOTS	MEDICAL SUPPLIES	\$745.90
01303523 4412	13	CORNERSTONE APPLIANCE SERVICE	APPLIANCE REPAIRS	\$237.19
01303525 4602	12	SERTA MATTRESS COMPANY	BOX SPRINGS - PS BOXSPRIN	\$420.00
01303525 4602	12	SERTA MATTRESS COMPANY	MATRESSES - PS DORSEY ET,	\$2,790.00
01303525 4628	12	TRIMARK MARLINN	10" WEAR EVER FRY PAN WIT	\$115.33
01303525 4628	12	TRIMARK MARLINN	13.5" HIGH TEMP. SPATULA	\$94.43
01303525 4628	12	TRIMARK MARLINN	4"X3" TURNER -04 129095	\$15.92
01303525 4628	12	TRIMARK MARLINN	8" WEAR EVER FRY PAN WITH	\$82.63
01303525 4628	12	TRIMARK MARLINN	CASE 38 OZ. ARCADE GLASS	\$247.93
01303525 4628	12	TRIMARK MARLINN	CASE OF 10-5/8" DINNER PL	\$152.79
01303525 4628	12	TRIMARK MARLINN	CASE OF 14OZ. GLASSES-400	\$66.21
01303525 4628	12	TRIMARK MARLINN	DIGITAL MEAT THERMOMETER	\$54.00
01303525 4628	12	TRIMARK MARLINN	DOZEN PANELED S & P SHAKE	\$5.67
01303525 4628	12	TRIMARK MARLINN	MEASURING CUP SET- 042706	\$43.66
01303525 4628	12	TRIMARK MARLINN	MEASURING SPOON SET- 04 2	\$10.03
01303525 4628	12	TRIMARK MARLINN	OVEN MITT - 09620061	\$92.14
01303525 4628	12	TRIMARK MARLINN	OVEN THERMOMETER - 04 640	\$17.34
01303525 4628	12	TRIMARK MARLINN	PAN GRABER - 09 620160	\$73.92
01303525 4628	12	TRIMARK MARLINN	PEPPER MILL- 04 445040	\$77.22
01303525 4628	12	TRIMARK MARLINN	SALAD SPINNER/DRYER - 482	\$98.15
01303525 4628	12	TRIMARK MARLINN	SUGAR POURER-01 159520	\$6.91
01303525 4628	12	TRIMARK MARLINN	WIRE GRILL BRUSH - 046090	\$55.60
<b>TOTAL FIRE STATIONS</b>				<b>\$5,502.97</b>
<b>FIRE</b>				<b>\$26,062.46</b>
01401222 4301	12	ILL STATE TOLL HWY AUTHORITY	POOL CAR #88	\$14.40
01401222 4303	13	IPWMAN	2013 MEMBERSHIP	\$250.00
01401223 4402	13	OFFICE DEPOT	OFFICE SUPPLIES	\$28.39
01401224 4510	13	RICOH AMERICAS CORP	REPAIR PARTS	\$144.54
<b>TOTAL ADMINISTRATIVE</b>				<b>\$437.33</b>
01404123 4410	13	K-TECH SPECIALTY COATINGS, INC	BEET HEET DELIVERED	\$4,928.43
01404123 4410	13	K-TECH SPECIALTY COATINGS, INC	RTN BEET HEET	(\$933.88)
01404123 4410	13	K-TECH SPECIALTY COATINGS, INC	VARIOUS SUPPLIES	\$585.00
01404123 4410	13	O'REILLY AUTO PARTS	VEHICLE REPAIR PARTS	\$199.98

# VILLAGE OF HOFFMAN ESTATES

February 4, 2013

ACCOUNT	YEAR	VENDOR	DESCRIPTION	AMOUNT
01404123 4410	13	SICALCO LTD	LIQUID CALCIUM CHLORIDE	\$2,413.63
01404123 4414	13	APPLIED INDUSTRIAL TECH, INC	VEHICLE REPAIR PARTS	\$176.00
01404123 4414	13	DULTMEIER SALES	VARIOUS SUPPLIES	\$54.93
<b>TOTAL SNOW &amp; ICE REMOVAL</b>				<b>\$7,424.09</b>
01404223 4408	13	A & A EQUIPMENT & SUPPLY CO.	ASPHALT	\$121.34
01404223 4414	13	O'REILLY AUTO PARTS	VEHICLE REPAIR PARTS	\$16.99
01404224 4521	13	BEVERLY MATERIALS, L.L.C.	SURFACE MATERIALS	\$490.40
<b>TOTAL PAVEMENT MAINTENANCE</b>				<b>\$628.73</b>
01404324 4507	12	STEVE PIPER & SONS, INC	TREE TRIMMING SERVICES	\$18,884.25
<b>TOTAL FORESTRY</b>				<b>\$18,884.25</b>
01404423 4412	12	MCMASTER CARR SUPPLY CO	LIQUID SOAP	\$136.48
01404423 4412	13	GRAINGER INC	HAND SANITIZER	\$56.63
01404423 4412	13	GRAINGER INC	SANITIZERS	\$53.46
01404424 4501	13	AT & T	Z99-0479	\$43.92
01404424 4503	12	NICOR GAS	1900 HASSELL	\$27.36
01404424 4503	12	NICOR GAS	411 W HIGGINS RD	\$7,653.75
01404424 4507	12	RED HAWK FIRE & SECURITY	DEC MONITORING	\$1,181.44
01404424 4507	13	ALEXIAN BROTHERS CORPORATE HEALTH	EMPLOYEE DRUG SCREEN	\$56.00
01404424 4507	13	MCCLLOUD SERVICES	PEST MGMT POLICE DEPT	\$88.00
01404424 4507	13	MCCLLOUD SERVICES	PEST MGMT VILLAGE HALL	\$90.00
01404424 4509	13	LECHNER AND SONS UNIFORM RENTAL	MONTHLY RENTAL SUPPLIES	\$37.82
01404424 4510	13	BRISTOL HOSE & FITTING	REPAIR PARTS	\$66.45
01404424 4510	13	GRAINGER INC	PLEATED FILTERS	\$36.48
01404424 4510	13	GRAINGER INC	VARIOUS SUPPLIES	\$159.05
01404424 4510	13	GRAYBAR ELECTRIC CO INC	ELECTRICAL LIGHTING	\$72.08
01404424 4510	13	GRAYBAR ELECTRIC CO INC	ELECTRICAL SUPPLIES	\$300.92
01404424 4510	13	STEINER ELECTRIC CO.	BLOWER	\$174.78
01404424 4516	13	GRAYBAR ELECTRIC CO INC	ELECTRICAL SUPPLIES	\$457.89
01404424 4516	13	TOTAL FACILITY MAINTENANCE, INC.	CLEANING VILLAGE HALL	\$2,840.00
01404424 4517	13	TOTAL FACILITY MAINTENANCE, INC.	CLEANING PW 2305	\$1,050.00
01404424 4518	13	GRAINGER INC	VARIOUS SUPPLIES	\$343.87
01404424 4520	13	GRAINGER INC	VARIOUS SUPPLIES	\$67.46
01404424 4520	13	TOTAL FACILITY MAINTENANCE, INC.	CLEANING JAN PW	\$1,300.00
<b>TOTAL FACILITIES</b>				<b>\$16,293.84</b>
01404522 4304	13	LECHNER AND SONS UNIFORM RENTAL	MONTHLY RENTAL SUPPLIES	\$35.74
01404523 4408	13	PAT CHLOPEK	TOOL ALLOWANCE	\$600.00
01404523 4411	13	PALATINE OIL CO., INC	FUEL	\$20,191.46
01404524 4507	13	ALEXIAN BROTHERS CORPORATE HEALTH	EMPLOYEE DRUG SCREEN	\$140.00
01404524 4510	13	CARQUEST AUTO PARTS	VEHICLE REPAIR PARTS	\$19.99
01404524 4510	12	AIRGAS USA, LLC	MEDICAL SUPPLIES	\$114.74
01404524 4513	13	BOB ROHRMAN'S SCHAUMBURG FORD	VEHICLE REPAIR PARTS	\$2.40
01404524 4513	13	BRETT EQUIPMENT CORP.	VARIOUS SUPPLIES	\$150.68
01404524 4513	13	CARQUEST AUTO PARTS	VEHICLE REPAIR PARTS	\$132.72
01404524 4513	13	INTERSTATE BATTERY SYSTEMS	VEHICLE REPAIR PARTS	\$101.95
01404524 4513	13	O'REILLY AUTO PARTS	VEHICLE REPAIR PARTS	\$54.99
01404524 4514	13	ACME TRUCK BRAKE & SUPPLY CO.	VEHICLE REPAIR PARTS	\$477.64

# VILLAGE OF HOFFMAN ESTATES

February 4, 2013

ACCOUNT	YEAR	VENDOR	DESCRIPTION	AMOUNT
01404524 4514	13	CARQUEST AUTO PARTS	VEHICLE REPAIR PARTS	\$12.62
01404524 4514	13	CASSIDY TIRE	VEHICLE REPAIR PARTS	\$738.30
01404524 4514	13	INTERSTATE BATTERY SYSTEMS	VEHICLE REPAIR PARTS	\$101.95
01404524 4514	13	LEE AUTO SCHAUMBURG	REPAIR PARTS	\$7.59
01404524 4514	13	O'REILLY AUTO PARTS	VEHICLE REPAIR PARTS	\$4.38
01404524 4514	12	INLAND POWER GROUP	SUPPLY PARTS	\$5.00
01404524 4534	13	BOB ROHRMAN'S SCHAUMBURG FORD	VEHICLE REPAIR PARTS	\$11.24
01404524 4534	13	BUCK BROS INC	REPAIR PARTS	\$43.11
01404524 4534	13	CARQUEST AUTO PARTS	VEHICLE REPAIR PARTS	\$473.34
01404524 4534	13	O'REILLY AUTO PARTS	VEHICLE REPAIR PARTS	\$255.04
01404524 4534	13	SPRING HILL FORD	VEHICLE REPAIR PARTS	\$34.23
01404524 4535	13	BOB ROHRMAN'S SCHAUMBURG FORD	VEHICLE REPAIR PARTS	\$72.62
01404524 4545	13	MIKE BACKSTROM	BOOT ALLOWANCE	\$125.00
<b>TOTAL FLEET SERVICES</b>				<b>\$23,906.73</b>
01404623 4414	12	MENARDS - HNVR PARK	VARIOUS SUPPLIES	\$13.98
01404624 4542	12	GROOT INDUSTRIES, INC ROLL OFF	YARD STICKERS	\$16.91
<b>TOTAL F.A.S.T.</b>				<b>\$30.89</b>
01404823 4408	13	A & A EQUIPMENT & SUPPLY CO.	VARIOUS SUPPLIES	\$89.50
01404823 4414	13	3M HAK0206	VARIOUS SUPPLIES	\$195.00
01404824 4502	12	CONSTELLATION NEW ENERGY INC	ELEC SERVICE	\$37.51
01404824 4502	13	COMMONWEALTH EDISON	ELECTRIC PW	\$714.48
01404824 4544	13	3M HAK0206	VARIOUS SUPPLIES	\$1,368.75
<b>TOTAL TRAFFIC CONTROL</b>				<b>\$2,405.24</b>
<b>PUBLIC WORKS</b>				<b>\$70,011.10</b>
01505122 4301	13	ILLINOIS ENVIRONMENTAL HEALTH ASSOC	REG FEE IEHA	\$90.00
01505122 4301	13	NWBOCA	EDUCATION BILL & BETTY	\$30.00
01505122 4301	13	SUBURBAN BLDG OFFICIALS CONF	SBOC TRAINING FOR 5	\$1,125.00
01505122 4303	13	AMERICAN ASSOC.OF CODE ENFORCEMENT	MEMBERSHIP DUES	\$75.00
01505122 4303	13	ILLINOIS DEPT OF PUBLIC HEALTH	FOOD SERVICE MGMT CERT	\$35.00
01505122 4303	13	INTERNATIONAL CODE COUNCIL	MEMBERSHIP DUES	\$225.00
01505122 4303	13	NWBOCA	MEMBERSHIP RENEW	\$50.00
01505122 4303	13	SUBURBAN BLDG OFFICIALS CONF	2013 SBOC MEMBERSHIP	\$75.00
01505123 4414	13	TRADE MARK PRODUCTS INC	PRINTING	\$19.50
01505124 4507	13	ABG SERVICES INC	REPAIRS	\$220.00
01505124 4507	13	THOMPSON ELEVATOR INSPECTION INC	ELEVATOR INSPECTION	\$570.00
01505124 4507	13	THOMPSON ELEVATOR INSPECTION INC	ELEVATOR INSPECTIONS	\$677.00
01505124 4545	13	BILL CHLEBIK	UNIFORM ALLOWANCE	\$150.00
01505124 4545	13	JEFF MATTES	UNIFORM ALLOWANCE	\$150.00
01505124 4545	13	JOHN CUMPEK	FIRE INSPECTION	\$150.00
<b>TOTAL CODE ENFORCEMENT</b>				<b>\$3,641.50</b>
01505222 4301	13	GARY SALAVITCH	RFD IAFSM REGISTRATION	\$393.00
01505223 4403	12	B & L BLUEPRINT, INC	SET OF FILES	\$26.40
01505224 4542	12	AMERICAN CHARGE SERVICE	31 TRIPS	\$30.00
01505224 4542	12	AMERICAN CHARGE SERVICE	38 TRIPS	\$170.00
01505224 4542	12	PACE SUBURBAN BUS SERVICE	RT 554 SERVICE	\$1,306.67

**VILLAGE OF HOFFMAN ESTATES**  
February 4, 2013

ACCOUNT	YEAR	VENDOR	DESCRIPTION	AMOUNT
01505224 4542	13	AMERICAN CHARGE SERVICE	DISCOUNT TAXI TRIPS	\$20.00
01505224 4542	13	AMERICAN CHARGE SERVICE	TAXI DISCOUNT TRIPS	\$125.00
<b>TOTAL TRANSPORTATION AND ENGINEERING</b>				<b>\$2,071.07</b>
<b>DEVELOPMENT SERVICES</b>				<b>\$5,712.57</b>
01605324 4562	13	INDESTRUCTO RENTAL CO., INC.	DEP TO SECURE 4TH TENTS	\$5,000.00
<b>TOTAL FOURTH OF JULY</b>				<b>\$5,000.00</b>
01605824 4575	13	JOYCE HUGGINS	ARTS COMM SPEAKER	\$250.00
01605824 4595	12	DIVINE SIGNS	PLAQUE	\$163.88
<b>TOTAL MISCELLANEOUS B &amp; C</b>				<b>\$413.88</b>
<b>BOARDS &amp; COMMISSIONS</b>				<b>\$5,413.88</b>
<b>TOTAL GENERAL FUND</b>				<b>\$153,843.70</b>
04000024 4542	13	NORTH WEST HOUSING PARTNERSHIP	CDBG REHAB 1604 MANCHESTE	\$14,922.00
04000024 4542	13	NORTH WEST HOUSING PARTNERSHIP	CDBG REHAB 1778 SESSIONS	\$18,935.00
<b>TOTAL COMMUNITY DEVELOPMENT BLOCK GRANT FUND</b>				<b>\$33,857.00</b>
06300024 4515	13	CARQUEST AUTO PARTS	VEHICLE REPAIR PARTS	\$4.21
06300024 4515	13	O'REILLY AUTO PARTS	VEHICLE REPAIR PARTS	\$1.46
<b>TOTAL FIRE</b>				<b>\$5.67</b>
06400025 4604	12	RED HAWK FIRE & SECURITY	STA 24 ACCESS CONTRL	\$134.00
<b>TOTAL PUBLIC WORKS</b>				<b>\$134.00</b>
06750024 4542	12	ARNSTEIN & LEHR LLP	PROF SERVICES	\$6,000.00
06750024 4542	12	GOVTEMPSUSA LLC	EDA REPORTING	\$910.00
06750024 4542	13	GOVTEMPSUSA LLC	EDA REPORTING	\$637.00
<b>TOTAL ADMINISTRATION</b>				<b>\$7,547.00</b>
<b>TOTAL EDA ADMINISTRATION FUND</b>				<b>\$7,686.67</b>
27000025 4621	12	V3 CONSULTANTS	CONSTR. INSPECTION	\$214.25
<b>TOTAL EDA SERIES 1991 PROJECT FUND</b>				<b>\$214.25</b>
36000025 4610	12	CRAWFORD, MURPHY & TILLY, INC	PHASE I ENGINEERING	\$75,207.27
<b>TOTAL CAPITAL IMPROVEMENTS FUND</b>				<b>\$75,207.27</b>
40400013 3425	13	NIEW LEGAL PARTNERS	RFD OVER PYMT WATER	\$255.05
40400013 3425	13	TANIS GROUP LLC	RFD OVER PYMT WATER	\$11.24
40400013 3425	13	TREO REALTORS	RFD OVER PYMT WATER	\$27.71
<b>TOTAL WATER REFUND</b>				<b>\$294.00</b>
40406722 4301	13	J J KELLER & ASSOCIATES INC	PROFESSIONAL SERVICES	\$66.00
40406722 4303	13	JULIE, INC.	ANNUAL TRANSMISSIONS	\$7,141.32
40406723 4402	13	OFFICE DEPOT	OFFICE SUPPLIES	\$28.40
40406723 4408	13	MENARDS - HNVR PARK	VARIOUS SUPPLIES	\$135.83
40406723 4408	13	USA BLUE BOOK	REPAIR PARTS	\$197.15
40406723 4414	13	USA BLUE BOOK	REPAIR PARTS	\$162.30

# VILLAGE OF HOFFMAN ESTATES

February 4, 2013

ACCOUNT	YEAR	VENDOR	DESCRIPTION	AMOUNT
40406723 4414	13	USA BLUE BOOK	SAFETY WEAR & REPAIR	\$111.90
40406724 4501	13	AT & T	Z99-0479	\$18.81
40406724 4502	12	CONSTELLATION NEW ENERGY INC	ELEC SERVICE	\$9,033.38
40406724 4503	12	NICOR GAS	1775 ABBEYWOOD	\$275.71
40406724 4503	12	NICOR GAS	4690 OLMSTEAD	\$25.17
40406724 4503	12	NICOR GAS	720 CHARLESTON	\$239.11
40406724 4503	12	NICOR GAS	95 ASTER LN	\$804.08
40406724 4507	12	RED HAWK FIRE & SECURITY	DEC MONITORING	\$506.33
40406724 4507	13	M.E. SIMPSON CO., INC.	LEAK LOCATION TEST	\$570.00
40406724 4507	13	SUBURBAN LABORATORIES, INC.	ANNUAL DRINKING WATER TES	\$150.00
40406724 4510	13	RICOH AMERICAS CORP	REPAIR PARTS	\$144.54
40406724 4529	13	MENARDS - HNVR PARK	VARIOUS SUPPLIES	\$90.17
40406724 4529	13	UNDERGROUND PIPE & VALVE CO	REPAIR PARTS	\$371.00
40406724 4529	13	ZIEBELL WATER SERVICE	REPAIR PARTS	\$1,291.79
40406724 4585	13	ACME TRUCK BRAKE & SUPPLY CO.	VEHICLE REPAIR PARTS	\$18.14
40406724 4585	13	INTERSTATE BATTERY SYSTEMS	VEHICLE REPAIR PARTS	\$213.90
40406724 4585	13	O'REILLY AUTO PARTS	VEHICLE REPAIR PARTS	\$2.49
40406725 4609	12	AUTOMATIC CONTROL SERVICES	INSTALLATION OF WIRELESS	\$40,000.00
<b>TOTAL WATER DIVISION</b>				<b>\$61,597.52</b>
40406823 4408	12	MENARDS - HNVR PARK	VARIOUS SUPPLIES	\$20.69
40406824 4502	12	CONSTELLATION NEW ENERGY INC	ELEC SERVICE	\$4,937.51
40406824 4510	13	A & A EQUIPMENT & SUPPLY CO.	REPAIR PARTS	\$175.70
40406824 4510	13	EJ EQUIPMENT	FREIGHT FOR LOANER	\$134.81
40406824 4510	13	STANDARD EQUIPMENT CO	VEHICLE REPAIR PARTS	\$186.08
40406824 4525	13	METROPOLITAN PUMP CO	NEW PUMP #1 CASEY FARMS L	\$7,343.00
40406824 4530	13	BEVERLY MATERIALS, L.L.C.	SURFACE MATERIALS	\$85.84
40406824 4530	13	WELCH BROS INC	REPAIR PARTS	\$935.56
40406825 4602	13	EJ EQUIPMENT	BULBS HALOGEN	\$114.98
40406825 4602	13	EJ EQUIPMENT	ELECTRONIC EQUIPMENT	\$82.00
40406825 4602	13	EJ EQUIPMENT	XENON BULBS	\$75.63
<b>TOTAL SEWER DIVISION</b>				<b>\$14,091.80</b>
<b>TOTAL WATERWORKS AND SEWERAGE FUND</b>				<b>\$75,983.32</b>
46 1101	12	VINCE P PUSATERI	REIM FOR MEDICAL EXP	\$2,066.66
<b>TOTAL RISK RETENTION</b>				<b>\$2,066.66</b>
46700024 4551	13	CANNON COCHRAN MGMT. SERVICES, INC.	CLAIMS & ADMIN FEES	\$3,312.50
46700024 4552	12	MULTIPLE CONCRETE ACCESS CORP	CLAIM	\$29.50
46700024 4552	12	PERR TRUCK & TRAILER BODY INC	VEHICLE COLLISION REPAIR	\$7,600.13
<b>TOTAL RISK RETENTION</b>				<b>\$10,942.13</b>
<b>TOTAL INSURANCE FUND</b>				<b>\$13,008.79</b>
47001223 4406	13	DOCUMENT IMAGING DIMENSIONS, INC.	BLACK INK	\$243.78
<b>TOTAL ADMINISTRATIVE</b>				<b>\$243.78</b>



# VILLAGE OF HOFFMAN ESTATES

February 4, 2013

ACCOUNT	YEAR	VENDOR	DESCRIPTION	AMOUNT
47008524 4507	13	DLS INTERNET SERVICES	INTERNET SERVICES	\$719.26
47008524 4510	13	SOLARWINDS	ANNUAL MAINTENANCE	\$1,218.00
47008524 4510	12	PORTER LEE CORP.	MAINTENANCE	\$695.00
<b>TOTAL OPERATIONS</b>				<b>\$2,632.26</b>
47008625 4602	12	DELL MARKETING L.P.	DELL LATITUDE 10 PER ATTA	\$2,144.74
47008625 4619	13	SUNGARD PUBLIC SECTOR	MAINTENANCE FEB 2013	\$9,469.00
<b>TOTAL CAPITAL ASSETS</b>				<b>\$11,613.74</b>
<b>TOTAL INFORMATION SYSTEMS FUND</b>				<b>\$14,489.78</b>
50000024 4542	13	JOE CRIMMINS	REIM FOR PENSION GIFT	\$229.33
<b>TOTAL POLICE PENSION FUND</b>				<b>\$229.33</b>
<b>BILL LIST TOTAL</b>				<b>\$374,520.11</b>

SUNGARD PUBLIC SECTOR  
DATE: 01/31/2013  
TIME: 13:00:20

VILLAGE OF HOFFMAN ESTATES  
CHECK REGISTER - BY FUND

PAGE NUMBER: 1  
ACCTPA21

SELECTION CRITERIA: transact.t\_c='20' and transact.trans\_date between '20130117 00:00:00. 0' and '20130131 00:00:00. 0'  
ACCOUNTING PERIOD: 1/13

FUND - 01 - GENERAL FUND

CASH ACCT	CHECK NO	ISSUE DT	-----VENDOR-----	BUDGET UNIT	ACCNT	----DESCRIPTION----	SALES TAX	AMOUNT
0102	83766	01/22/13	1317 MARTY SALERNO	01	1450	C-PAL	0.00	1,636.95
0102	83767	01/23/13	15210 NBC-LEO CITY CULTUR	01556523	4405	AWARD APPLICATION	0.00	300.00
0102	83774	01/25/13	3056 ANDRES MEDICAL BILL	01000013	3405	NOVEMBER CHARGES	0.00	4,336.39
0102	83775	01/29/13	12166 AARP HEALTH CARE OP	01	1216	INS. PYMT JAN DEDUC	0.00	179.99
TOTAL CASH ACCOUNT							0.00	6,453.33
TOTAL FUND							0.00	6,453.33

SUNGARD PUBLIC SECTOR  
DATE: 01/31/2013  
TIME: 13:00:20

VILLAGE OF HOFFMAN ESTATES  
CHECK REGISTER - BY FUND

PAGE NUMBER: 2  
ACCTEA21

SELECTION CRITERIA: transact.t\_c='20' and transact.trans\_date between '20130117 00:00:00. 0' and '20130131 00:00:00. 0'  
ACCOUNTING PERIOD: 1/13

FUND - 40 - WATER & SEWER FUND

CASH ACCT	CHECK NO	ISSUE DT	-----VENDOR-----	BUDGET UNIT	ACCNT	----DESCRIPTION----	SALES TAX	AMOUNT
0102	83776	01/31/13	6421 ELVIR KUNICA	40400013	3425	RFD OVER PYMT WATER	0.00	1,942.82
TOTAL CASH ACCOUNT							0.00	1,942.82
TOTAL FUND							0.00	1,942.82
TOTAL REPORT							0.00	8,396.15

VILLAGE OF HOFFMAN ESTATES

**AN ORDINANCE GRANTING A VARIATION TO  
PREMISES AT 405 AZALEA LANE, HOFFMAN ESTATES, ILLINOIS**

WHEREAS, the Planning and Zoning Commission, at a public hearing duly called and held according to law on January 16, 2013, considered the request by Jeff Whyte, the owner of record of the property commonly known as 405 Azalea Lane, Hoffman Estates, IL, and shown on Exhibit "A" attached hereto and made a part hereof, to consider the request for a variation from Section 9-5-2-D-5 of the Zoning Code to permit an existing house, room addition and attached garage addition on the property located at 405 Azalea Lane; and

WHEREAS, the Planning and Zoning Commission made a certain Finding of Fact attached hereto and made a part hereof as Exhibit "B" and recommended approval of the variation to the Board of Trustees; and

WHEREAS, the Corporate Authorities have received and considered said recommendation; and

WHEREAS, it appears that there are particular hardships or practical difficulties in the way of carrying out the strict letter of the Zoning Code to the property in question and that the proposed variation has met the standards of Section 9-1-15-C of the Zoning Code of the Hoffman Estates Municipal Code.

NOW, THEREFORE, BE IT ORDAINED by the President and Board of Trustees of the Village of Hoffman Estates, Cook and Kane Counties, Illinois, as follows:

Section 1: The Corporate Authorities hereby find that the facts and statements contained in the preamble of this Ordinance are true.

Section 2: A variation from Section 9-5-2-D-5 of the Zoning Code of the Hoffman Estates Municipal Code is hereby granted to permit a five foot (5') side yard setback variation to allow an existing house, room addition and attached garage addition to be set back ten feet (10') from the east side lot line instead of the minimum required fifteen feet (15') on the property commonly known as 405 Azalea Lane.

Section 3: The Village Clerk is hereby authorized to publish this ordinance in pamphlet form.

Section 4: This Ordinance shall be in full force and effect immediately from and after its passage and approval.

PASSED THIS \_\_\_\_\_ day of \_\_\_\_\_, 2013

VOTE	AYE	NAY	ABSENT	ABSTAIN
Trustee Karen V. Mills	_____	_____	_____	_____
Trustee Raymond M. Kincaid	_____	_____	_____	_____
Trustee Jacquelyn Green	_____	_____	_____	_____
Trustee Anna Newell	_____	_____	_____	_____
Trustee Gary J. Pilafas	_____	_____	_____	_____
Trustee Gary G. Stanton	_____	_____	_____	_____
Mayor William D. McLeod	_____	_____	_____	_____

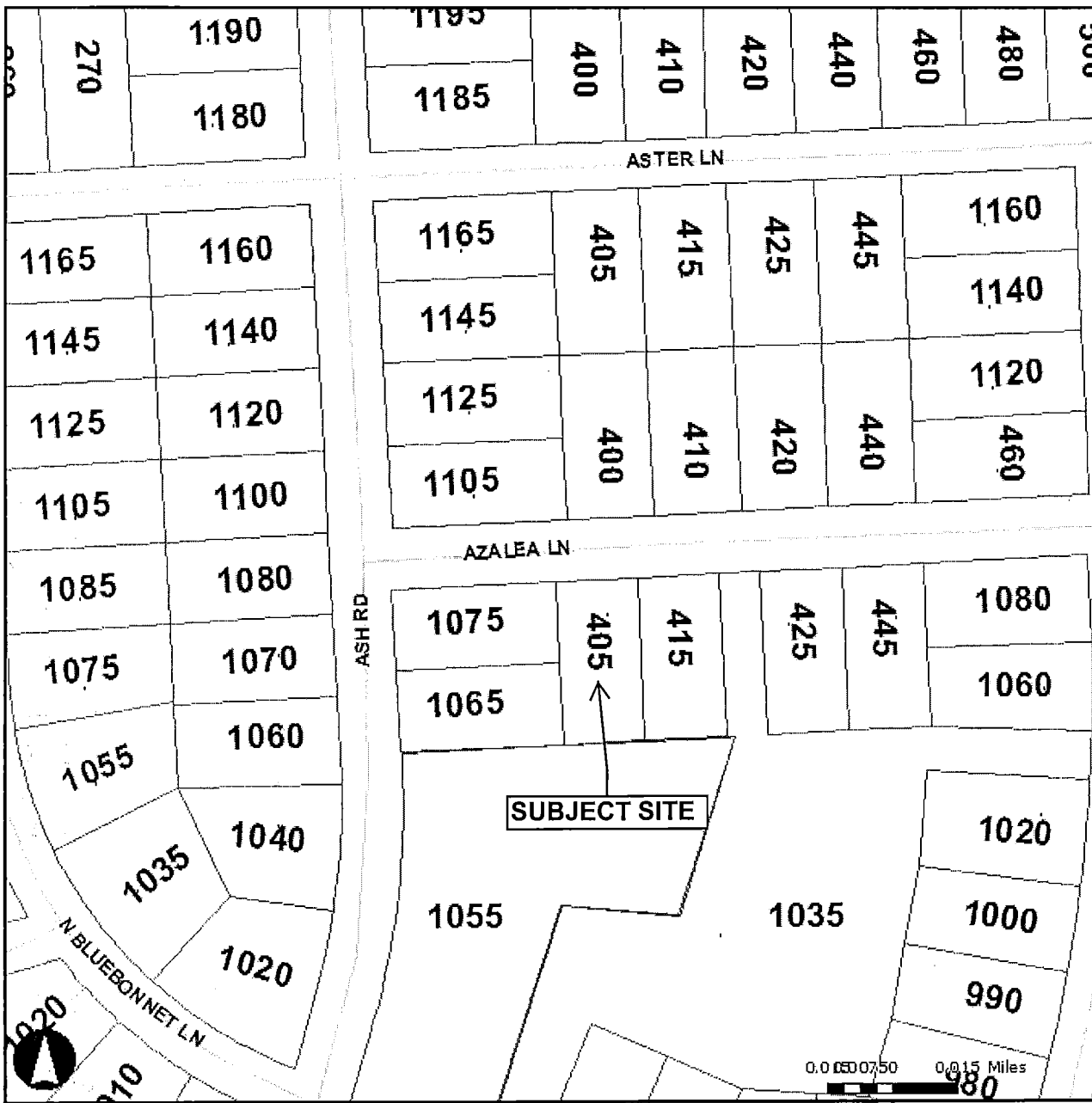
APPROVED THIS \_\_\_\_\_ DAY OF \_\_\_\_\_, 2013

\_\_\_\_\_  
Village President

ATTEST:

\_\_\_\_\_  
Village Clerk

Published in pamphlet form this \_\_\_\_\_ day of \_\_\_\_\_, 2013.



December 27, 2012  
Village of Hoffman Estates  
Planning Division



**VILLAGE OF HOFFMAN ESTATES  
PLANNING AND ZONING COMMISSION  
STAFF REPORT**

PROJECT NO.: 2012047R PROJECT NAME: 405 AZALEA LANE EXISTING HOUSE, ROOM  
ADDITION, AND ATTACHED GARAGE ADDITION SETBACK VARIATION

PROJECT ADDRESS/LOCATION: 405 AZALEA LANE

PUBLIC HEARING    
YES NO

REZONING  MASTER SIGN PLAN  SPECIAL USE  VARIATION   
SITE PLAN  PLAT

MEETING DATE: JANUARY 16, 2013

STAFF ASSIGNED: JOSH EDWARDS JAE

**REQUESTED MOTION**

Request by Jeff Whyte for a 5 foot side yard setback variation from Section 9-5-2-D-5 to allow an existing house, room addition, and attached garage addition to be set back 10 feet from the east side lot line instead of the minimum required 15 feet at 405 Azalea Lane.

INCLUDES RECOMMENDED CONDITION(S)    
YES NO

ZONING DISTRICT: R-2, ONE-FAMILY RESIDENTIAL

ADJACENT	NORTH: R-2, ONE-FAMILY RESIDENTIAL	SOUTH: BIRCH PARK, R-2, ONE-FAMILY RESIDENTIAL
PROPERTIES:	EAST: R-2, ONE-FAMILY RESIDENTIAL	WEST: R-2, ONE-FAMILY RESIDENTIAL

**APPLICABLE ZONING CODE SECTIONS**

Section 9-5-2-D-5 of the Zoning Code states that the side yard setback of the principal structure shall be 15 feet. The proposed addition is part of the principal structure.

**PROPOSAL**

The petitioner is proposing to construct an addition to the house to expand the existing attached garage and the living area. The addition is located in the southeast corner of the house in an area that includes a concrete patio. The house remodel would also include converting an existing sunroom next to the proposed addition into part of the expanded garage and to create a new master bedroom. Other interior changes would add a fourth bedroom to the house. The existing house is set back 10 feet from the east side property line, which is legal nonconforming. The addition would extend the east wall of the house

southward at the same setback as the existing portion of the house. A variation is required to expand the house within the required setback area.

The house was built prior to the Village's 1959 incorporation and the adoption of the 15 foot setback Zoning Code requirement. The proposed motion includes the existing house as well as the proposed addition so that the entire house side yard setback would be made legal by Village ordinance.

The existing attached garage would be expanded from approximately 454 to 558 square feet, which complies with Zoning Code Section 9-3-6-K which requires a minimum two-car, 440 square foot garage and allows a maximum of 750 square feet. The garage would be a tandem, four-car garage.

### VARIATION STANDARDS

Section 9-1-15 of the Zoning Code – *Standards for a Variation* - states that the Planning and Zoning Commission shall not recommend the adoption of a proposed variation unless it finds that the variation meets the Standards for Variations as set forth in the Zoning Code.

1. The Planning and Zoning Commission shall not recommend the variation of the regulations of the Code unless it shall first make a finding based upon the evidence presented to it in each specific case that:
  - a. The property in question cannot yield a reasonable return if permitted to be used only under the conditions allowed by the regulations in the district in which it is located;
  - b. The plight of the owner is due to unique circumstances;
  - c. The variation, if granted, will not alter the essential character of the locality.
2. For the purpose of implementing the above rules, the Planning and Zoning Commission shall also, in making its determination whether there are practical difficulties or particular hardships, take into consideration the extent to which the following facts favorable to the applicant have been established by the evidence:
  - a. The particular physical surroundings, shape of topographical condition of the specific property involved would result in a particular hardship upon the owner, as distinguished from a mere inconvenience, if the strict letter of the regulations were carried out;
  - b. The conditions upon which the petition for a variation is based would not be applicable, generally, to other property within the same zoning classification;
  - c. The purpose of the variation is not based exclusively upon a desire to increase the value of the property;
  - d. The alleged difficulty or hardship has not been based exclusively upon a desire to increase the value of property;
  - e. The granting of the variation will not be detrimental to the public welfare or injurious to other property or improvements in the neighborhood in which the property is located; and
  - f. The proposed variation will not impair an adequate supply of light and air to adjacent property, or substantially increase the congestion in the public streets, or increase the danger of fires, or endanger the public safety, or substantially diminish or impair property values in the neighborhood.
3. The Planning and Zoning Commission may recommend to the Village Board that such conditions and restrictions be imposed upon the premises benefited by a variation as may be necessary to comply with the standards set forth in this section to reduce or minimize the injurious effect of such variation upon other property in the neighborhood, and better to carry out the general intent of this Code.

If this request is approved, the variation ordinance would be granted to the property in perpetuity.

**NOTIFICATION**

A Statement of Awareness was received from the side yard neighbor closest to the garage addition (415 Azalea Lane). Standard notification letters have been sent to surrounding properties within 150 feet and no comments have been received.

**STAFF SUMMARY**

The Village has approved several house and garage additions, with a similar or greater encroachment into the side yard setback. In this case the addition follows an existing house elevation and is not extending farther into the setback toward the neighboring house. The east elevation is angled slightly away from the property line, from front to back, so that the addition is a few inches farther from the property line than at the front corner of the house. A minor encroachment into a side yard has generally been considered acceptable as a compromise to allow a property to improve and to increase garage parking.

The house could be expanded elsewhere in the center of the rear yard outside of the required setback; however, the applicant has stated that this would not be practical for expanding the existing garage.

Attachments:   Petitioner Application & Submittals  
                  Legal Notice  
                  Location Map  
                  Staff Exhibit – Aerial Photo



VILLAGE OF HOFFMAN ESTATES

**A RESOLUTION FOR  
CONSTRUCTION ON STATE HIGHWAYS**

WHEREAS, the Village of Hoffman Estates, hereinafter referred to as "Municipality", located in the Counties of Cook and Kane, State of Illinois, desires to undertake, in the years of 2013 and 2014, the location, construction, operation and maintenance of driveways and street returns, watermains, sanitary and storm sewers, street lights, traffic signals, sidewalk, landscaping, etc. on State highways, within said Municipality, which, by law and/or agreement, come under the jurisdiction and control of the Department of Transportation of the State of Illinois hereinafter referred to as Department; and

WHEREAS, an individual working permit must be obtained from the Department prior to any of the aforesaid installations being constructed either by the Municipality or by a private person or firm under contract and supervision of the Municipality.

NOW, THEREFORE, BE IT RESOLVED by the President and Board of Trustees of the Village of Hoffman Estates, Cook and Kane Counties, Illinois, as follows:

Section 1: That the Village of Hoffman Estates hereby pledges its good faith and guarantees that all work shall be performed in accordance with conditions of the permit to be granted by the Department, and to hold the State of Illinois harmless during the prosecution of such work, and assume all liability for damages to person or property due to accident or otherwise by reason of the work which is to be performed under the provision of said permit.

Section 2: That all authorized officials of the Village of Hoffman Estates are hereby instructed and authorized to sign said working permit on behalf of the Village of Hoffman Estates.

Section 3: That this Resolution shall be in full force and effect immediately from and after its passage and approval.

PASSED THIS \_\_\_\_\_ day of \_\_\_\_\_, 2013

VOTE	AYE	NAY	ABSENT	ABSTAIN
Trustee Karen V. Mills	_____	_____	_____	_____
Trustee Raymond M. Kincaid	_____	_____	_____	_____
Trustee Jacquelyn Green	_____	_____	_____	_____
Trustee Anna Newell	_____	_____	_____	_____
Trustee Gary J. Pilafas	_____	_____	_____	_____
Trustee Gary G. Stanton	_____	_____	_____	_____
Mayor William D. McLeod	_____	_____	_____	_____

APPROVED THIS \_\_\_\_\_ DAY OF \_\_\_\_\_, 2013

\_\_\_\_\_  
Village President

ATTEST:

\_\_\_\_\_  
Village Clerk

RESOLUTION NO. \_\_\_\_\_ - 2013

VILLAGE OF HOFFMAN ESTATES

A RESOLUTION SETTING FORTH  
PREVAILING HOURLY WAGE RATE  
PAID TO EMPLOYEES ENGAGE IN  
WORK AWARDED UNDER PUBLIC CONTRACT

WHEREAS, 820 ILCS 13/04 requires that the general prevailing hourly wage rate shall be paid to employees engaged in work awarded under public contract; and

WHEREAS, the statutes further provide that these rates be publicly posted and/or kept available for inspection by interested parties and that a certified copy be filed with the Illinois Secretary of State, Index Division, and the Illinois Department of Labor.

NOW, THEREFORE, BE IT RESOLVED by the President and Board of Trustees of the Village of Hoffman Estates, Cook and Kane Counties, Illinois, as follows:

Section 1: That it has been ascertained that the wage rates as attached hereto as Exhibit "A" as determined by the Illinois Department of Labor are the prevailing hourly rates being paid to all skilled and unskilled workers engaged in the construction of streets and other projects under the Village of Hoffman Estates jurisdiction from and after this date.

Section 2: That the above information shall not be construed to apply to the prevailing hourly wage rates for employment in Hoffman Estates other than Public Works construction as defined in the Act.

Section 3: That this Resolution shall be in full force and effect immediately from and after its passage and approval.

PASSED THIS \_\_\_\_\_ day of \_\_\_\_\_, 2013

VOTE	AYE	NAY	ABSENT	ABSTAIN
Trustee Karen V. Mills	_____	_____	_____	_____
Trustee Raymond M. Kincaid	_____	_____	_____	_____
Trustee Jacquelyn Green	_____	_____	_____	_____
Trustee Anna Newell	_____	_____	_____	_____
Trustee Gary J. Pilafas	_____	_____	_____	_____
Trustee Gary G. Stanton	_____	_____	_____	_____
Mayor William D. McLeod	_____	_____	_____	_____

APPROVED THIS \_\_\_\_\_ DAY OF \_\_\_\_\_, 2013

\_\_\_\_\_  
Village President

ATTEST:

\_\_\_\_\_  
Village Clerk

### Cook County Prevailing Wage for January 2013

(See explanation of column headings at bottom of wages)

Trade Name	RG	TYP	C	Base	FRMAN	M-F>8	OSA	OSH	H/W	Pensn	Vac	Trng
ASBESTOS ABT-GEN	ALL			36.200	36.700	1.5	1.5	2.0	12.78	9.020	0.000	0.500
ASBESTOS ABT-MEC	BLD			34.160	36.660	1.5	1.5	2.0	10.82	10.66	0.000	0.720
BOILERMAKER	BLD			43.450	47.360	2.0	2.0	2.0	6.970	14.66	0.000	0.350
BRICK MASON	BLD			40.680	44.750	1.5	1.5	2.0	9.550	12.00	0.000	0.970
CARPENTER	ALL			41.520	43.520	1.5	1.5	2.0	13.19	11.75	0.000	0.530
CEMENT MASON	ALL			42.350	44.350	2.0	1.5	2.0	11.21	11.40	0.000	0.320
CERAMIC TILE FINSHER	BLD			34.440	0.000	2.0	1.5	2.0	9.700	6.930	0.000	0.610
COMM. ELECT.	BLD			37.500	40.150	1.5	1.5	2.0	8.420	9.980	1.100	0.700
ELECTRIC PWR EQMT OP	ALL			43.350	48.350	1.5	1.5	2.0	10.38	13.50	0.000	0.430
ELECTRIC PWR GRNDMAN	ALL			33.810	48.350	1.5	1.5	2.0	8.090	10.53	0.000	0.330
ELECTRIC PWR LINEMAN	ALL			43.350	48.350	1.5	1.5	2.0	10.38	13.50	0.000	0.430
ELECTRICIAN	ALL			42.000	44.800	1.5	1.5	2.0	12.83	13.07	0.000	0.750
ELEVATOR CONSTRUCTOR	BLD			48.560	54.630	2.0	2.0	2.0	11.03	11.96	2.910	0.000
FENCE ERECTOR	ALL			33.740	35.740	1.5	1.5	2.0	12.61	10.18	0.000	0.250
GLAZIER	BLD			39.500	41.000	1.5	2.0	2.0	11.99	14.30	0.000	0.840
HT/FROST INSULATOR	BLD			45.550	48.050	1.5	1.5	2.0	10.82	11.86	0.000	0.720
IRON WORKER	ALL			40.750	42.750	2.0	2.0	2.0	13.20	19.09	0.000	0.350
LABORER	ALL			36.200	36.950	1.5	1.5	2.0	12.78	9.020	0.000	0.500
LATHER	ALL			41.520	43.520	1.5	1.5	2.0	13.19	11.75	0.000	0.530
MACHINIST	BLD			43.550	46.050	1.5	1.5	2.0	6.130	8.950	1.850	0.000
MARBLE FINISHERS	ALL			29.700	0.000	1.5	1.5	2.0	9.550	11.75	0.000	0.620
MARBLE MASON	BLD			39.880	43.870	1.5	1.5	2.0	9.550	11.75	0.000	0.730
MATERIAL TESTER I	ALL			26.200	0.000	1.5	1.5	2.0	12.78	9.020	0.000	0.500
MATERIALS TESTER II	ALL			31.200	0.000	1.5	1.5	2.0	12.78	9.020	0.000	0.500
MILLWRIGHT	ALL			41.520	43.520	1.5	1.5	2.0	13.19	11.75	0.000	0.530
OPERATING ENGINEER	BLD 1			45.100	49.100	2.0	2.0	2.0	15.70	10.55	1.900	1.250
OPERATING ENGINEER	BLD 2			43.800	49.100	2.0	2.0	2.0	15.70	10.55	1.900	1.250
OPERATING ENGINEER	BLD 3			41.250	49.100	2.0	2.0	2.0	15.70	10.55	1.900	1.250
OPERATING ENGINEER	BLD 4			39.500	49.100	2.0	2.0	2.0	15.70	10.55	1.900	1.250
OPERATING ENGINEER	BLD 5			48.850	49.100	2.0	2.0	2.0	15.70	10.55	1.900	1.250
OPERATING ENGINEER	BLD 6			46.100	49.100	2.0	2.0	2.0	15.70	10.55	1.900	1.250
OPERATING ENGINEER	BLD 7			48.100	49.100	2.0	2.0	2.0	15.70	10.55	1.900	1.250
OPERATING ENGINEER	FLT 1			51.300	51.300	1.5	1.5	2.0	11.70	8.050	1.900	1.150
OPERATING ENGINEER	FLT 2			49.800	51.300	1.5	1.5	2.0	11.70	8.050	1.900	1.150
OPERATING ENGINEER	FLT 3			44.350	51.300	1.5	1.5	2.0	11.70	8.050	1.900	1.150
OPERATING ENGINEER	FLT 4			36.850	51.300	1.5	1.5	2.0	11.70	8.050	1.900	1.150
OPERATING ENGINEER	HWY 1			43.300	47.300	1.5	1.5	2.0	15.70	10.55	1.900	1.250
OPERATING ENGINEER	HWY 2			42.750	47.300	1.5	1.5	2.0	15.70	10.55	1.900	1.250
OPERATING ENGINEER	HWY 3			40.700	47.300	1.5	1.5	2.0	15.70	10.55	1.900	1.250
OPERATING ENGINEER	HWY 4			39.300	47.300	1.5	1.5	2.0	15.70	10.55	1.900	1.250
OPERATING ENGINEER	HWY 5			38.100	47.300	1.5	1.5	2.0	15.70	10.55	1.900	1.250
OPERATING ENGINEER	HWY 6			46.300	47.300	1.5	1.5	2.0	15.70	10.55	1.900	1.250
OPERATING ENGINEER	HWY 7			44.300	47.300	1.5	1.5	2.0	15.70	10.55	1.900	1.250
ORNAMNTL IRON WORKER	ALL			40.800	43.300	2.0	2.0	2.0	12.86	15.61	0.000	0.500
PAINTER	ALL			40.000	44.750	1.5	1.5	1.5	9.750	11.10	0.000	0.770
PAINTER SIGNS	BLD			33.920	38.090	1.5	1.5	1.5	2.600	2.710	0.000	0.000
PILEDRIVER	ALL			41.520	43.520	1.5	1.5	2.0	13.19	11.75	0.000	0.530
PIPEFITTER	BLD			45.050	48.050	1.5	1.5	2.0	8.460	14.85	0.000	1.780
PLASTERER	BLD			40.250	42.670	1.5	1.5	2.0	10.85	10.94	0.000	0.550
PLUMBER	BLD			45.000	47.000	1.5	1.5	2.0	12.53	10.06	0.000	0.880
ROOFER	BLD			38.350	41.350	1.5	1.5	2.0	8.080	8.220	0.000	0.430
SHEETMETAL WORKER	BLD			40.810	44.070	1.5	1.5	2.0	10.13	17.79	0.000	0.630

SIGN HANGER	BLD			29.460	29.960	1.5	1.5	2.0	4.800	2.980	0.000	0.000
SPRINKLER FITTER	BLD			49.200	51.200	1.5	1.5	2.0	10.25	8.200	0.000	0.450
STEEL ERECTOR	ALL			40.750	42.750	2.0	2.0	2.0	13.20	19.09	0.000	0.350
STONE MASON	BLD			40.680	44.750	1.5	1.5	2.0	9.550	12.00	0.000	0.970
TERRAZZO FINISHER	BLD			35.510	0.000	1.5	1.5	2.0	9.700	9.320	0.000	0.400
TERRAZZO MASON	BLD			39.370	42.370	1.5	1.5	2.0	9.700	10.66	0.000	0.550
TILE MASON	BLD			41.430	45.430	2.0	1.5	2.0	9.700	8.640	0.000	0.710
TRAFFIC SAFETY WRKR	HWY			28.250	29.850	1.5	1.5	2.0	4.896	4.175	0.000	0.000
TRUCK DRIVER	E ALL 1			33.850	34.500	1.5	1.5	2.0	8.150	8.500	0.000	0.150
TRUCK DRIVER	E ALL 2			34.100	34.500	1.5	1.5	2.0	8.150	8.500	0.000	0.150
TRUCK DRIVER	E ALL 3			34.300	34.500	1.5	1.5	2.0	8.150	8.500	0.000	0.150
TRUCK DRIVER	E ALL 4			34.500	34.500	1.5	1.5	2.0	8.150	8.500	0.000	0.150
TRUCK DRIVER	W ALL 1			32.550	33.100	1.5	1.5	2.0	6.500	4.350	0.000	0.000
TRUCK DRIVER	W ALL 2			32.700	33.100	1.5	1.5	2.0	6.500	4.350	0.000	0.000
TRUCK DRIVER	W ALL 3			32.900	33.100	1.5	1.5	2.0	6.500	4.350	0.000	0.000
TRUCK DRIVER	W ALL 4			33.100	33.100	1.5	1.5	2.0	6.500	4.350	0.000	0.000
TUCKPOINTER	BLD			40.950	41.950	1.5	1.5	2.0	8.180	10.82	0.000	0.940

#### Legend:

- RG (Region)
- TYP (Trade Type - All, Highway, Building, Floating, oil & Chlp, Rivers)
- C (Class)
- Base (Base Wage Rate)
- FRMAN (Foreman Rate)
- M-F>8 (OT required for any hour greater than 8 worked each day, Mon through Fri.)
- OSA (Overtime (OT) is required for every hour worked on Saturday)
- OSH (Overtime is required for every hour worked on Sunday and Holidays)
- H/W (Health & Welfare Insurance)
- Pensn (Pension)
- Vac (Vacation)
- Trng (Training)

### Explanations

#### COOK COUNTY

The following list is considered as those days for which holiday rates of wages for work performed apply: New Years Day, Memorial Day, Fourth of July, Labor Day, Thanksgiving Day, Christmas Day and Veterans Day in some classifications/counties. Generally, any of these holidays which fall on a Sunday is celebrated on the following Monday. This then makes work performed on that Monday payable at the appropriate overtime rate for holiday pay. Common practice in a given local may alter certain days of celebration. If in doubt, please check with IDOL.

TRUCK DRIVERS (WEST) - That part of the county West of Barrington Road.

#### EXPLANATION OF CLASSES

ASBESTOS - GENERAL - removal of asbestos material/mold and hazardous materials from any place in a building, including mechanical systems where those mechanical systems are to be removed. This includes the removal of asbestos materials/mold and hazardous materials from ductwork or pipes in a building when the building is to be demolished at the time or at some close future date.

ASBESTOS - MECHANICAL - removal of asbestos material from mechanical systems, such as pipes, ducts, and boilers, where the mechanical systems are to remain.

## CERAMIC TILE FINISHER

The grouting, cleaning, and polishing of all classes of tile, whether for interior or exterior purposes, all burned, glazed or unglazed products; all composition materials, granite tiles, warning detectable tiles, cement tiles, epoxy composite materials, pavers, glass, mosaics, fiberglass, and all substitute materials, for tile made in tile-like units; all mixtures in tile like form of cement, metals, and other materials that are for and intended for use as a finished floor surface, stair treads, promenade roofs, walks, walls, ceilings, swimming pools, and all other places where tile is to form a finished interior or exterior. The mixing of all setting mortars including but not limited to thin-set mortars, epoxies, wall mud, and any other sand and cement mixtures or adhesives when used in the preparation, installation, repair, or maintenance of tile and/or similar materials. The handling and unloading of all sand, cement, lime, tile, fixtures, equipment, adhesives, or any other materials to be used in the preparation, installation, repair, or maintenance of tile and/or similar materials. Ceramic Tile Finishers shall fill all joints and voids regardless of method on all tile work, particularly and especially after installation of said tile work. Application of any and all protective coverings to all types of tile installations including, but not be limited to, all soap compounds, paper products, tapes, and all polyethylene coverings, plywood, masonite, cardboard, and any new type of products that may be used to protect tile installations, Blastrac equipment, and all floor scarifying equipment used in preparing floors to receive tile. The clean up and removal of all waste and materials. All demolition of existing tile floors and walls to be re-tiled.

## COMMUNICATIONS ELECTRICIAN

Installation, operation, inspection, maintenance, repair and service of radio, television, recording, voice sound vision production and reproduction, telephone and telephone interconnect, facsimile, data apparatus, coaxial, fibre optic and wireless equipment, appliances and systems used for the transmission and reception of signals of any nature, business, domestic, commercial, education, entertainment, and residential purposes, including but not limited to, communication and telephone, electronic and sound equipment, fibre optic and data communication systems, and the performance of any task directly related to such installation or service whether at new or existing sites, such tasks to include the placing of wire and cable and electrical power conduit or other raceway work within the equipment room and pulling wire and/or cable through conduit and the installation of any incidental conduit, such that the employees covered hereby can complete any job in full.

## MARBLE FINISHER

Loading and unloading trucks, distribution of all materials (all stone, sand, etc.), stocking of floors with material, performing all rigging for heavy work, the handling of all material that may be needed for the installation of such materials, building of scaffolding, polishing if needed, patching, waxing of material if damaged, pointing up, caulking, grouting and cleaning of marble, holding water on diamond or Carborundum blade or saw for setters cutting, use of tub saw or any other saw needed for preparation of

material, drilling of holes for wires that anchor material set by setters, mixing up of molding plaster for installation of material, mixing up thin set for the installation of material, mixing up of sand to cement for the installation of material and such other work as may be required in helping a Marble Setter in the handling of all material in the erection or installation of interior marble, slate, travertine, art marble, serpentine, alberene stone, blue stone, granite and other stones (meaning as to stone any foreign or domestic materials as are specified and used in building interiors and exteriors and customarily known as stone in the trade), carrara, sanionyx, vitrolite and similar opaque glass and the laying of all marble tile, terrazzo tile, slate tile and precast tile, steps, risers treads, base, or any other materials that may be used as substitutes for any of the aforementioned materials and which are used on interior and exterior which are installed in a similar manner.

MATERIAL TESTER I: Hand coring and drilling for testing of materials; field inspection of uncured concrete and asphalt.

MATERIAL TESTER II: Field inspection of welds, structural steel, fireproofing, masonry, soil, facade, reinforcing steel, formwork, cured concrete, and concrete and asphalt batch plants; adjusting proportions of bituminous mixtures.

## OPERATING ENGINEER - BUILDING

Class 1. Asphalt Plant; Asphalt Spreader; Autograde; Backhoes with Caisson Attachment; Batch Plant; Benoto (requires Two Engineers); Boiler and Throttle Valve; Caisson Rigs; Central Redi-Mix Plant; Combination Back Hoe Front End-loader Machine; Compressor and Throttle Valve; Concrete Breaker (Truck Mounted); Concrete Conveyor; Concrete Conveyor (Truck Mounted); Concrete Paver Over 27E cu. ft.; Concrete Paver 27E cu. ft. and Under; Concrete Placer; Concrete Placing Boom; Concrete Pump (Truck Mounted); Concrete Tower; Cranes, All; Cranes, Hammerhead; Cranes, (GCI and similar Type); Creter Crane; Crusher, Stone, etc.; Derricks, All; Derricks, Traveling; Formless Curb and Gutter Machine; Grader, Elevating; Grouting Machines; Highlift Shovels or Front Endloader 2-1/4 yd. and over; Hoists, Elevators, outside type rack and pinion and similar machines; Hoists, One, Two and Three Drum; Hoists, Two Tugger One Floor; Hydraulic Backhoes; Hydraulic Boom Trucks; Hydro Vac (and similar equipment); Locomotives, All; Motor Patrol; Lubrication Technician; Manipulators; Pile Drivers and Skid Rig; Post Hole Digger; Pre-Stress Machine; Pump Cretes Dual Ram; Pump Cretes; Squeeze Cretes-Screw Type Pumps; Gypsum Bulker and Pump; Raised and Blind Hole Drill; Roto Mill Grinder; Scoops - Tractor Drawn; Slip-Form Paver; Straddle Buggies; Tournapull; Tractor with Boom and Side Boom; Trenching Machines.

Class 2. Boilers; Broom, All Power Propelled; Bulldozers; Concrete Mixer (Two Bag and Over); Conveyor, Portable; Forklift Trucks; Highlift Shovels or Front Endloaders under 2-1/4 yd.; Hoists, Automatic; Hoists, Inside Elevators; Hoists, Sewer Dragging Machine; Hoists, Tugger Single Drum; Rock Drill (Self-Propelled); Rock Drill (Truck Mounted); Rollers, All; Steam Generators; Tractors, All; Tractor Drawn Vibratory Roller; Winch Trucks with "A" Frame.

Class 3. Air Compressor; Combination Small Equipment Operator; Generators; Heaters, Mechanical; Hoists, Inside Elevators; Hydraulic

Power Units (Pile Driving, Extracting, and Drilling); Pumps, over 3" (1 to 3 not to exceed a total of 300 ft.); Low Boys; Pumps, Well Points; Welding Machines (2 through 5); Winches, 4 Small Electric Drill Winches; Bobcats (up to and including  $\frac{3}{4}$  cu yd.) .

Class 4. Bobcats and/or other Skid Steer Loaders (other than bobcats up to and including  $\frac{3}{4}$  cu yd.); Oilers; and Brick Forklift.

Class 5. Assistant Craft Foreman.

Class 6. Gradall.

Class 7. Mechanics.

#### OPERATING ENGINEERS - HIGHWAY CONSTRUCTION

Class 1. Asphalt Plant; Asphalt Heater and Planer Combination; Asphalt Heater Scarfire; Asphalt Spreader; Autograder/GOMACO or other similar type machines; ABG Paver; Backhoes with Caisson Attachment; Ballast Regulator; Belt Loader; Caisson Rigs; Car Dumper; Central Redi-Mix Plant; Combination Backhoe Front Endloader Machine, (1 cu. yd. Backhoe Bucket or over or with attachments); Concrete Breaker (Truck Mounted); Concrete Conveyor; Concrete Paver over 27E cu. ft.; Concrete Placer; Concrete Tube Float; Cranes, all attachments; Cranes, Tower Cranes of all types; Creter Crane; Crusher, Stone, etc.; Derricks, All; Derrick Boats; Derricks, Traveling; Dowell Machine with Air Compressor; Dredges; Formless Curb and Gutter Machine; Grader, Elevating; Grader, Motor Grader, Motor Patrol, Auto Patrol, Form Grader, Pull Grader, Subgrader; Guard Rail Post Driver Truck Mounted; Hoists, One, Two and Three Drum; Hydraulic Backhoes; Backhoes with shear attachments; Lubrication Technician; Manipulators; Mucking Machine; Pile Drivers and Skid Rig; Pre-Stress Machine; Pump Cretes Dual Ram; Rock Drill - Crawler or Skid Rig; Rock Drill - Truck Mounted; Rock/Track Tamper; Roto Mill Grinder; Slip-Form Paver; Soil Test Drill Rig (Truck Mounted); Straddle Buggies; Hydraulic Telescoping Form (Tunnel); Tractor Drawn Belt Loader (with attached pusher - two engineers); Tractor with Boom; Tractaire with Attachments; Trenching Machine; Truck Mounted Concrete Pump with Boom; Raised or Blind Hole Drills (Tunnel Shaft); Underground Boring and/or Mining Machines 5 ft. in diameter and over tunnel, etc; Underground Boring and/or Mining Machines under 5 ft. in diameter; Wheel Excavator; Widener (APSCO).

Class 2. Batch Plant; Bituminous Mixer; Boiler and Throttle Valve; Bulldozers; Car Loader Trailing Conveyors; Combination Backhoe Front Endloader Machine (Less than 1 cu. yd. Backhoe Bucket or over or with attachments); Compressor and Throttle Valve; Compressor, Common Receiver (3); Concrete Breaker or Hydro Hammer; Concrete Grinding Machine; Concrete Mixer or Paver 7S Series to and including 27 cu. ft.; Concrete Spreader; Concrete Curing Machine, Burlap Machine, Belting Machine and Sealing Machine; Concrete Wheel Saw; Conveyor Muck Cars (Haglund or Similar Type); Drills, All; Finishing Machine - Concrete; Highlift Shovels or Front Endloader; Hoist - Sewer Dragging Machine; Hydraulic Boom Trucks (All Attachments); Hydro-Blaster; All Locomotives, Dinky; Off-Road Hauling Units (including articulating)/2 ton capacity or more; Non Self-Loading Ejection Dump; Pump Cretes: Squeeze Cretes - Screw Type Pumps, Gypsum Bulker and Pump; Roller, Asphalt; Rotary Snow Plows; Rototiller, Seaman, etc., self-propelled;

Scoops - Tractor Drawn; Self-Propelled Compactor; Spreader - Chip - Stone, etc.; Scraper; Scraper - Prime Mover in Tandem (Regardless of Size); Tank Car Heater; Tractors, Push, Pulling Sheeps Foot, Disc, Compactor, etc.; Tug Boats.

Class 3. Boilers; Brooms, All Power Propelled; Cement Supply Tender; Compressor, Common Receiver (2); Concrete Mixer (Two Bag and Over); Conveyor, Portable; Farm-Type Tractors Used for Mowing, Seeding, etc.; Fireman on Boilers; Forklift Trucks; Grouting Machine; Hoists, Automatic; Hoists, All Elevators; Hoists, Tugger Single Drum; Jeep Diggers; Low Boys; Pipe Jacking Machines; Post-Hole Digger; Power Saw, Concrete Power Driven; Pug Mills; Rollers, other than Asphalt; Seed and Straw Blower; Steam Generators; Stump Machine; Winch Trucks with "A" Frame; Work Boats; Tamper-Form-Motor Driven.

Class 4. Air Compressor; Combination - Small Equipment Operator; Directional Boring Machine; Generators; Heaters, Mechanical; Hydraulic Power Unit (Pile Driving, Extracting, or Drilling); Hydro-Blaster; Light Plants, All (1 through 5); Pumps, over 3" (1 to 3 not to exceed a total of 300 ft.); Pumps, Well Points; Tractaire; Welding Machines (2 through 5); Winches, 4 Small Electric Drill Winches.

Class 5. Bobcats (all); Brick Forklifts; Oilers.

Class 6. Field Mechanics and Field Welders

Class 7. Gradall and machines of like nature.

#### OPERATING ENGINEER - FLOATING

Class 1. Craft Foreman; Diver/Wet Tender; and Engineer (hydraulic dredge).

Class 2. Crane/Backhoe Operator; 70 Ton or over Tug Operator; Mechanic/Welder; Assistant Engineer (Hydraulic Dredge); Leverman (Hydraulic Dredge); Diver Tender; Friction and Lattice Boom Cranes.

Class 3. Deck Equipment Operator, Machineryman; Maintenance of Crane (over 50 ton capacity); Tug/Launch Operator; Loader/Dozer and like equipment on Barge; and Deck Machinery, etc.

Class 4. Deck Equipment Operator, Machineryman/Fireman (4 Equipment Units or More); Off Road Trucks (2 ton capacity or more); Deck Hand, Tug Engineer, Crane Maintenance 50 Ton Capacity and Under or Backhoe Weighing 115,000 pounds or less; and Assistant Tug Operator.

#### TERRAZZO FINISHER

The handling of sand, cement, marble chips, and all other materials that may be used by the Mosaic Terrazzo Mechanic, and the mixing, grinding, grouting, cleaning and sealing of all Marble, Mosaic, and Terrazzo work, floors, base, stairs, and wainscoting by hand or machine, and in addition, assisting and aiding Marble, Masonic, and Terrazzo Mechanics.

#### TRAFFIC SAFETY

Work associated with barricades, horses and drums used to reduce lane usage on highway work, the installation and removal of temporary lane

markings, and the installation and removal of temporary road signs.

TRUCK DRIVER - BUILDING, HEAVY AND HIGHWAY CONSTRUCTION - EAST & WEST

Class 1. Two or three Axle Trucks. A-frame Truck when used for transportation purposes; Air Compressors and Welding Machines, including those pulled by cars, pick-up trucks and tractors; Ambulances; Batch Gate Lockers; Batch Hopperman; Car and Truck Washers; Carry-alls; Fork Lifts and Hoisters; Helpers; Mechanics Helpers and Greasers; Oil Distributors 2-man operation; Pavement Breakers; Pole Trailer, up to 40 feet; Power Mower Tractors; Self-propelled Chip Spreader; Skipman; Slurry Trucks, 2-man operation; Slurry Truck Conveyor Operation, 2 or 3 man; Teamsters; Unskilled Dumpman; and Truck Drivers hauling warning lights, barricades, and portable toilets on the job site.

Class 2. Four axle trucks; Dump Crets and Adgetors under 7 yards; Dumpsters, Track Trucks, Euclids, Hug Bottom Dump Turnapulls or Turntrailers when pulling other than self-loading equipment or similar equipment under 16 cubic yards; Mixer Trucks under 7 yards; Ready-mix Plant Hopper Operator, and Winch Trucks, 2 Axles.

Class 3. Five axle trucks; Dump Crets and Adgetors 7 yards and over; Dumpsters, Track Trucks, Euclids, Hug Bottom Dump Turntrailers or turnapulls when pulling other than self-loading equipment or similar equipment over 16 cubic yards; Explosives and/or Fission Material Trucks; Mixer Trucks 7 yards or over; Mobile Cranes while in transit; Oil Distributors, 1-man operation; Pole Trailer, over 40 feet; Pole and Expandable Trailers hauling material over 50 feet long; Slurry trucks, 1-man operation; Winch trucks, 3 axles or more; Mechanic--Truck Welder and Truck Painter.

Class 4. Six axle trucks; Dual-purpose vehicles, such as mounted crane trucks with hoist and accessories; Foreman; Master Mechanic; Self-loading equipment like P.B. and trucks with scoops on the front.

Other Classifications of Work:

For definitions of classifications not otherwise set out, the Department generally has on file such definitions which are available. If a task to be performed is not subject to one of the classifications of pay set out, the Department will upon being contacted state which neighboring county has such a classification and provide such rate, such rate being deemed to exist by reference in this document. If no neighboring county rate applies to the task, the Department shall undertake a special determination, such special determination being then deemed to have existed under this determination. If a project requires these, or any classification not listed, please contact IDOL at 217-782-1710 for wage rates or clarifications.

LANDSCAPING

Landscaping work falls under the existing classifications for laborer, operating engineer and truck driver. The work performed by landscape plantsman and landscape laborer is covered by the existing classification of laborer. The work performed by landscape operators (regardless of equipment used or its size) is covered by the classifications of operating engineer. The work performed by

landscape truck drivers (regardless of size of truck driven) is covered by the classifications of truck driver.

**ADDITIONAL  
BUSINESS**

# VILLAGE OF HOFFMAN ESTATES

## Memo

**TO:** President & Board of Trustees  
**FROM:** Daniel P. O'Malley, Deputy Village Manager  
**RE:** 4<sup>TH</sup> OF JULY FIREWORKS  
**DATE:** February 1, 2013

---

Attached is the revised contract between Melrose Pyrotechnics, Inc. and the Village of Hoffman Estates for the 2013 Northwest Fourth-Fest.

The revised contract includes references to the Village's bid specifications so that performance factors are insured.

If you have any questions, please do not hesitate to contact me.



---

Daniel P. O'Malley, Deputy Village Manager

DPO/ds

Attachment



**MELROSE PYROTECHNICS, INC.**

**AGREEMENT**

This contract entered into this 31<sup>st</sup> Day of January AD 2013 by and between MELROSE PYROTECHNICS, INC. of Kingsbury, Indiana and Village of Hoffman Estates (Customer) of City Hoffman Estates State Illinois.

WITNESSETH: MELROSE PYROTECHNICS, INC. for and in consideration of the terms hereinafter mentioned, agrees to furnish to the CUSTOMER one (1) Fireworks Display(s) as per agreement made and accepted and made a part hereof, including the services of our Operator to take charge of and fire display under the supervision and direction of the Customer, said display to be given on the evening of July 4, 2011; July 4, 2012; July 4, 2013 Customer Initial \_\_\_\_\_, weather permitting, it being understood that should inclement weather prevent the giving of this display on the date mentioned herein the parties shall agree to a mutually convenient alternate date, within six (6) months of the original display date. Customer shall remit to the first party an additional 15% of the total contract price for additional expenses in presenting the display on an alternate date. The determination to cancel the show because of inclement or unsafe weather conditions shall rest within the sole discretion of MELROSE PYROTECHNICS, INC. In the event the customer does not choose to reschedule another date or cannot agree to a mutually convenient date, MELROSE PYROTECHNICS, INC. shall be entitled to 40% of the contract price for costs, damages and expenses. If the fireworks exhibition is canceled by CUSTOMER prior to the display, CUSTOMER shall be responsible for and shall pay to MELROSE PYROTECHNICS, INC. on demand, all MELROSE PYROTECHNICS, INC.'s out of pocket expenses incurred in preparation for the show including but not limited to, material purchases, preparation and design costs, deposits, licenses and employee charges. **5% PRODUCT BONUS FROM EACH OF THE FIRST TWO YEARS TOTALING \$2,500.00 ADDED TO THE THIRD YEAR AT NO ADDITIONAL CHARGE**

MELROSE PYROTECHNICS, INC. agrees to furnish all necessary fireworks display materials and personnel for a fireworks display in accordance with the program approved by the parties. Quantities and varieties of products in the program are approximate. After final design, exact specifications will be supplied upon request. Should this display require any Union related costs; their fees are not included in this agreement.

It is further agreed and understood that the CUSTOMER is to pay MELROSE PYROTECHNICS, INC. the sum of Fifteen Thousand Dollars (\$15,000.00) for 07/04/11 display; Thirty-Five Thousand Dollars (\$35,000.00) for 07/04/12 display; and Thirty-Nine Thousand Dollars (\$39,000.00) for 07/04/13 display for a display valued at \$41,500.00. A service fee of 1 1/2 % per month shall be added, if account is not paid within 30 days of the show date.

MELROSE PYROTECHNICS, INC. will obtain Public Liability and Property Damage and Workers Compensation Insurance. As well as comply with all requirements of the Specifications For A Fireworks Display per the 2013 bid document.

Customer will provide the following items:

- (a) Sufficient area for the display, including a minimum spectator set back of 420 feet at all points from the discharge area.
- (b) Protection of the display area by roping-off or similar facility.
- (c) Adequate police protection to prevent spectators from entering display area.
- (d) Search of the fallout area at first light following a nighttime display.

It is further agreed and mutually understood that nothing in this contract shall be construed or interpreted to mean a partnership, both parties being hereto responsible for their separate and individual debts and obligations and neither party shall be responsible for any agreements not stipulated in this contract. Customer agrees to pay any and all collection costs, including reasonable attorney's fees and court costs incurred by MELROSE PYROTECHNICS, INC. in the collection or attempted collections of any amount due under this agreement and invoice.

The parties hereto do mutually and severally guarantee terms, conditions, and payments of this contract, these articles to be binding upon the parties, themselves, their heirs, executors, administrators, successors and assigns.

**MELROSE PYROTECHNICS, INC.**

**CUSTOMER**

By: Wynn Cramer

By:

Its duly authorized agent, who represents he/she has full authority to bind the customer.

Date Signed: January 31, 2013

Date Signed: \_\_\_\_\_

(PLEASE TYPE OR PRINT)

**Wynn Cramer, Event Producer**

Name: \_\_\_\_\_

1 Kingsbury Industrial Park, P.O. Box 302

Address: \_\_\_\_\_

Kingsbury, Indiana 46345

Phone: \_\_\_\_\_

(800) 771-7976



## **Village of Hoffman Estates**

July 4, 2013  
Attachment "A"

### Shell Summary

1,260 – 2 ½" Aerial Display Shells  
1,182 – 3" Aerial Display Shells  
437 – 4" Aerial Display Shells  
288 – 5" Aerial Display Shells  
168 – 6" Aerial Display Shells

#### **Melrose Pyrotechnics**

1 Kingsbury Industrial Park  
P.O. Box 302  
Kingsbury, IN 46345

T 219-393-5522 800-771-7976  
F 219-393-5710 800-775-7976

[melroseyro.com](http://melroseyro.com)

NB 2

**COMMITTEE AGENDA ITEM  
VILLAGE OF HOFFMAN ESTATES**

**SUBJECT:** 2013 4<sup>th</sup> of July Fireworks Display Contract

**MEETING DATE:** January 28, 2013

**COMMITTEE:** Finance

**FROM:** Jackie Green, Chair, 4<sup>th</sup> of July Commission

---

**PURPOSE:** To provide a recommendation from the 4th of July Commission to award the 2013 fireworks display contract.

**BACKGROUND:** In October 2012, a notice was published accepting bids for the 2013 fireworks display at the Northwest Fourth-Fest. Bids were opened on November 2, 2012 and the results are provided on the Bid Summary attached. The full bid submittals are in the Board ante room for your review.

**DISCUSSION:** As you can see, four (4) bids were submitted: Addy Pyrotechnics, Mad Bomber Fireworks Productions, New Horizon Pyrotechnics, Inc., and Melrose Pyrotechnics, Inc. The Village bids this service by providing the total budget and each vendor proposes a fireworks display show based on that amount.

As the Bid Summary shows, the proposed displays vary regarding shell count and size. The displays range from a high shell count of 5,430 (Mad Bomber) to the low of 2,541 (Addy). However, the larger shell (4"-6") count percentage also varies from the high of 61.5% (New Horizon) to the low of 24.8% (Mad Bomber). All bids met the duration of 30 minute show time minimum and provided a cost of \$45,000 (budgeted amount), except Melrose who proposed a total cost of \$39,000. The Commission reviewed these proposals, which included a DVD of each vendor's proposed display, and based on that review and analysis, recommends Melrose Pyrotechnics for the award of this bid in accordance with the attached contract. Melrose Pyrotechnics complies with all bid requirements and has a favorable history with the Village providing quality fireworks displays in the past.

**FINANCIAL IMPACT:** The 4<sup>th</sup> of July budget contains \$15,000 to cover the Village's share of this expense. The partnering communities will fund the balance.

**RECOMMENDATION:** The 4<sup>th</sup> of July Commission recommends that the 2013 fireworks display contract be awarded to Melrose Pyrotechnics, Kingsbury, IN, in an amount not to exceed \$39,000 for the fireworks display at the Northwest Fourth-Fest.

**2013 FIREWORKS DISPLAY  
PROGRAM DESCRIPTION  
TALLY**

	<b>Mad Bomber</b>	<b>New Horizon</b>	<b>Melrose Pyro</b>	<b>Addy Pyro</b>
<b>OPENING</b>				
2.5" shells	240	360	72	240
3" shells	120	300	40	144
4" shells	54	250	9	72
5" shells	28	140	5	18
6" shells	24	60	0	81
<b>Subtotal:</b>	<b>466</b>	<b>1,110</b>	<b>126</b>	<b>555</b>
<b>MAIN SHOW</b>				
2.5" shells	0	0	828	240
3" shells	480	0	590	288
4" shells	360	600	359	144
5" shells	280	400	219	144
6" shells	216	200	126	162
<b>Subtotal:</b>	<b>1,336</b>	<b>1,200</b>	<b>2,122</b>	<b>978</b>
<b>MID-FINALE:</b>				
2.5" shells	360	0	144	120
3" shells	240	200	90	72
4" shells	72	150	15	72
5" shells	42	80	9	72
6" shells	24	50	6	18
<b>Subtotal:</b>	<b>738</b>	<b>480</b>	<b>264</b>	<b>354</b>
<b>FINALE:</b>				
2.5" shells	840		216	240
3" shells	1,800	800	400	144
4" shells	144	320	27	144
5" shells	70	200	24	72
6" shells	36	180	18	54
<b>Subtotal:</b>	<b>2,890</b>	<b>1,500</b>	<b>685</b>	<b>654</b>
<b>GRAND TOTAL</b>	<b>5,430</b>	<b>4,290</b>	<b>3,197</b>	<b>2,541</b>

### Percentage of Shells by Size

	Mad Bomber	%	New Horizon	%	Melrose Pyro	%	Addy Pyro	%
2.5" Shells	1,440	26.5	360	8.4	1,260	39.4	840	33.0
3" Shells	2,640	48.6	1,300	30.0	1,120	35.0	648	25.5
4" Shells	630	11.6	1,320	31.0	410	12.8	432	17.0
5" Shells	420	7.7	820	19.1	257	8.0	306	12.0
6" Shells	300	5.5	490	11.4	150	4.7	315	12.4
<b>Total</b>	<b>5,430</b>		<b>4,290</b>		<b>3,197</b>		<b>2,541</b>	

### Display Data

	Mad Bomber	%	New Horizon	%	Melrose Pyro	%	Addy Pyro	%
2.5-3"	4,080	75.1	1,660	38.4	2,380	74.4	1,488	58.5
4-6"	1,350	24.8	2,630	61.5	817	25.5	1,053	41.4
Main Show	1,336	24.6	1,200	27.9	2,122	66.3	978	38.4
Finale	2,890	53.2	1,500	35.0	685	21.4	654	25.7
Duration	30 min		35 min		30 min		29m 54 sec	
Cost	\$45,000		\$45,000		\$39,000		\$45,000	