

COMMITTEE AGENDA ITEM

VILLAGE OF HOFFMAN ESTATES

SUBJECT: 30-Day Progress Report from Commonwealth Edison Regarding the Status of Resident Issues Concerning Power Service

MEETING DATE: January 23, 2012

COMMITTEE: Public Works & Utilities

FROM: Daniel P. O'Malley, Deputy Village Manager
Joseph Nebel, Director of Public Works

PURPOSE: For Commonwealth Edison to provide a 30-day status reports on resident issues concerning power service as discussed at previous Public Works & Utilities Committee meetings.

BACKGROUND: You will recall on August 29, 2011, Commonwealth Edison appeared at the Special Public Works & Utilities Committee meeting to discuss the cause and remedies regarding numerous and lengthy power outages throughout the Village due to storms in June and July 2011. At that meeting, several residents raised other power issues and ComEd agreed to investigate those issues and report back to the Committee. ComEd appeared at both the October 24 and December 12, Public Works & Utilities Committee meetings with information on the proposed improvements. As the Committee requested ComEd is to continue to provide 30-day progress reports.

DISCUSSION: Attached to this agenda item is the Commonwealth Edison 30-day progress update as provided to staff.

RECOMMENDATION: For discussion purposes.

Hoffman Estates Reliability Update

January 19, 2012

All Overhead work is projected to start Feb. 2012

All pocket reliability improvement work is projected to be completed by May 2012

Projected dates could change based on weather condition

Improvements include – May 2012 projected completion

- Move customers off of existing circuit and electrically switch them to the adjacent circuit. Typically ComEd does not perform requests for “switching” circuits. The planned improvements on the existing circuit will improve reliability to customers in Palatine, Inverness and Hoffman Estates including the 34 customers in this section shown below.



Hoffman Estates – Westbury and Haman – E0210



An Exelon Company

Improvements include-May 2012 projected completion

-



Hoffman Estates – Castaway Ln – E0225

Improvements include – Under further investigation

- Targeted trimming on the rear lot portions of the mainline
- This area has had 1 sustained outage this year, but has seen several momentary outages and flickering lights.
- The momentary outages have largely occurred during stormy weather when we set the upstream recloser (automation device) on fast trip to try to eliminate any transient faults that will cause fuses to operate.
- The flickering lights are still under investigation.



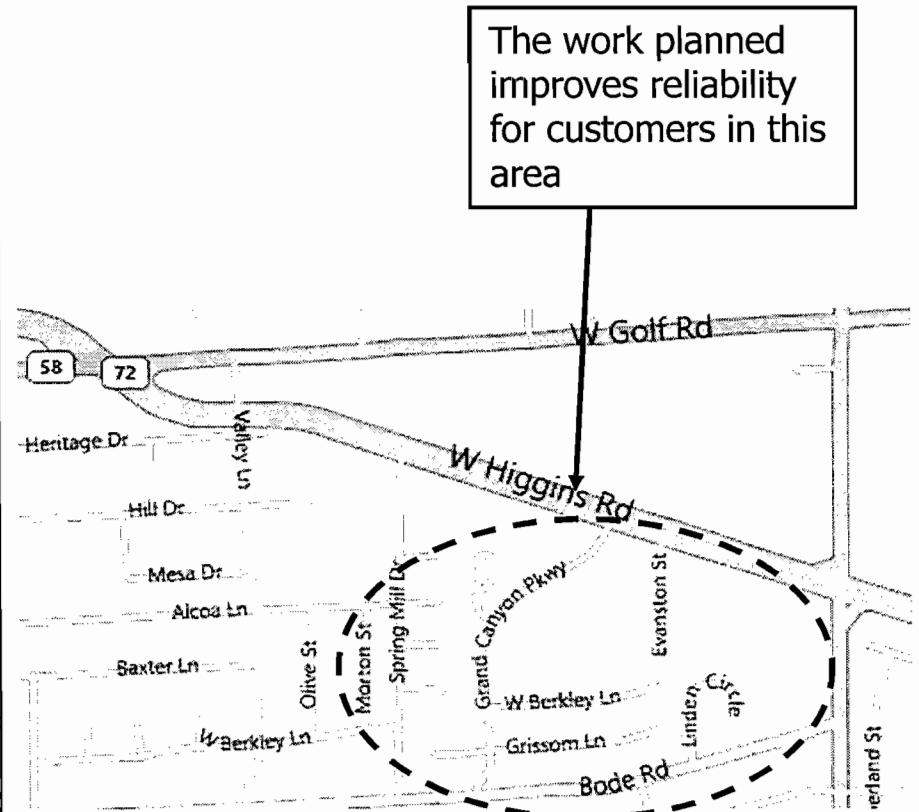
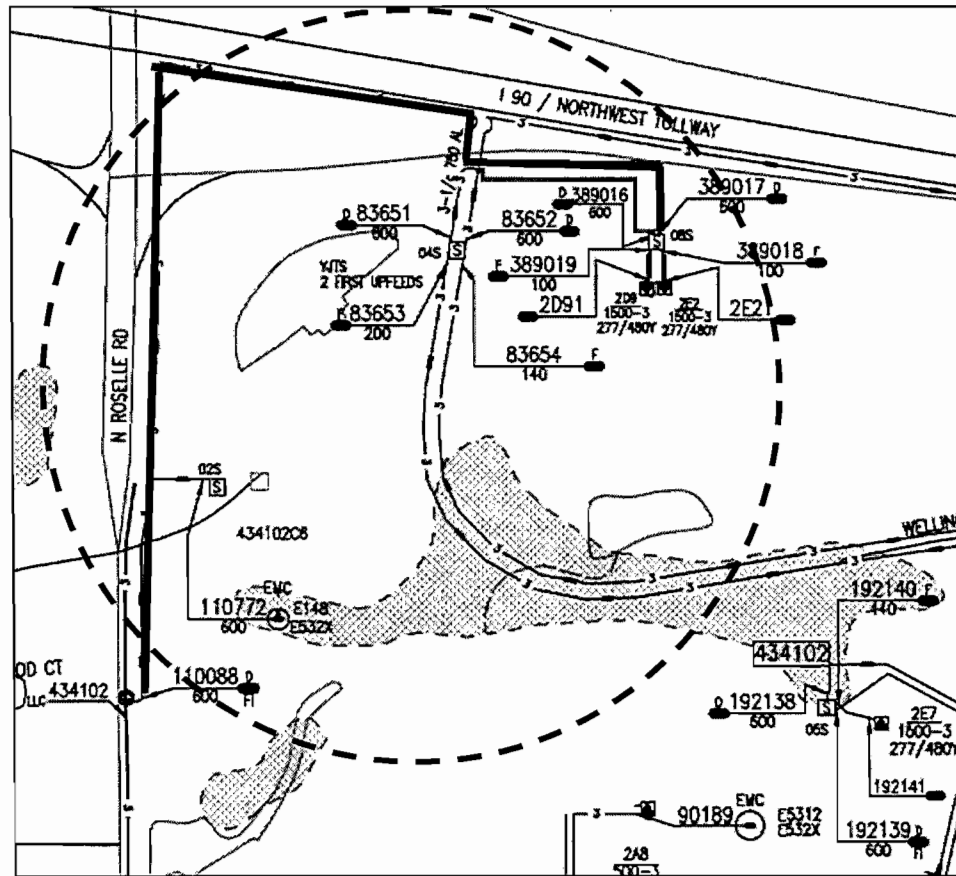
Hoffman Estates – Higgins, Bode, W of Roselle



An Exelon Company

Improvements include – May 2012 projected completion

- Outages have been caused by unfavorable trending of mainline cable along Roselle Road. Replacement of cable will improve reliability to all customers on these circuit including the 722 in Hoffman Estates.



Hoffman Estates – Hillcrest area-E148

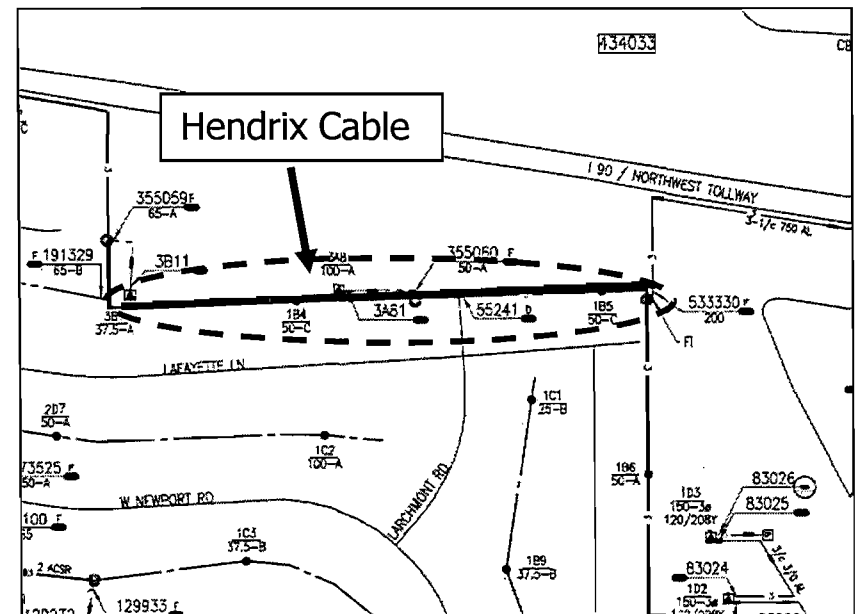
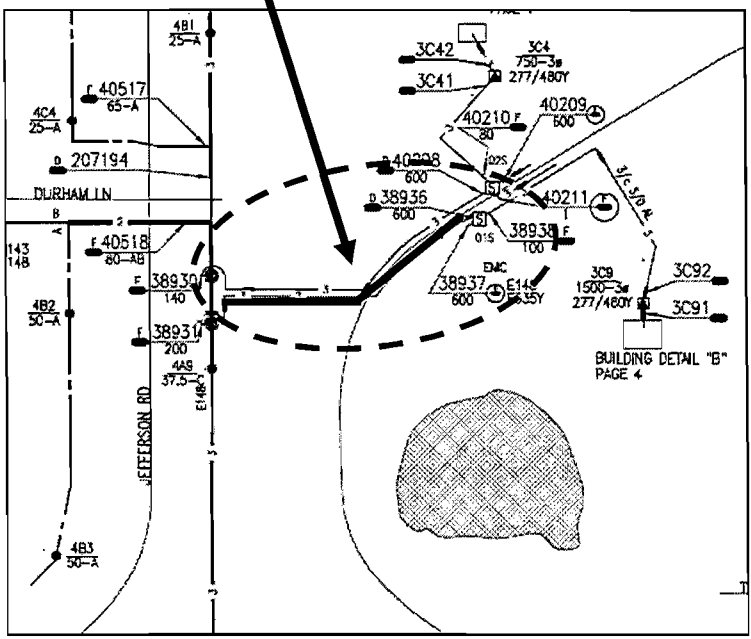
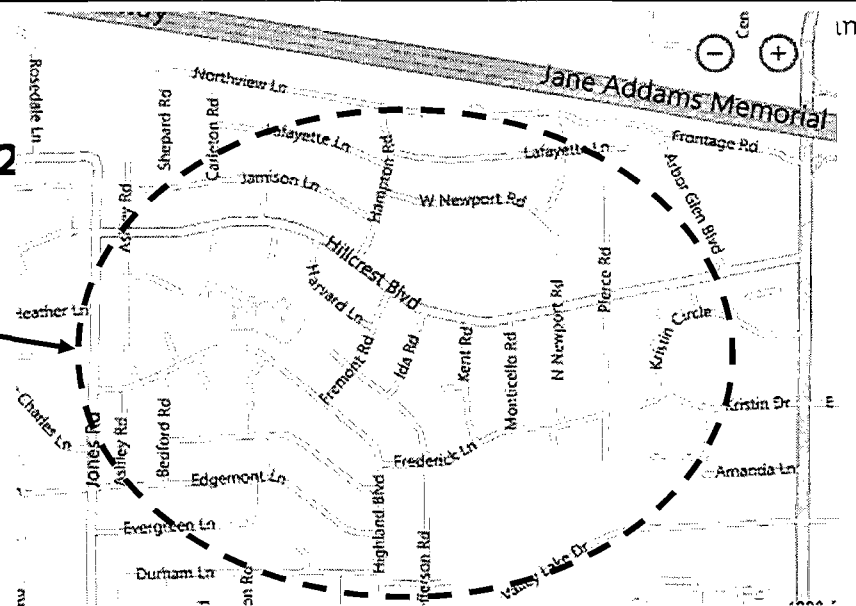


**Cable replacement started Dec. 2011 & will conclude Dec. 2012,
Hendrix installation projected to start Feb 2012**

- Improvements include- Cable replacement and Hendrix

Mainline Cable Replacement

The work planned improves reliability for customers in this area



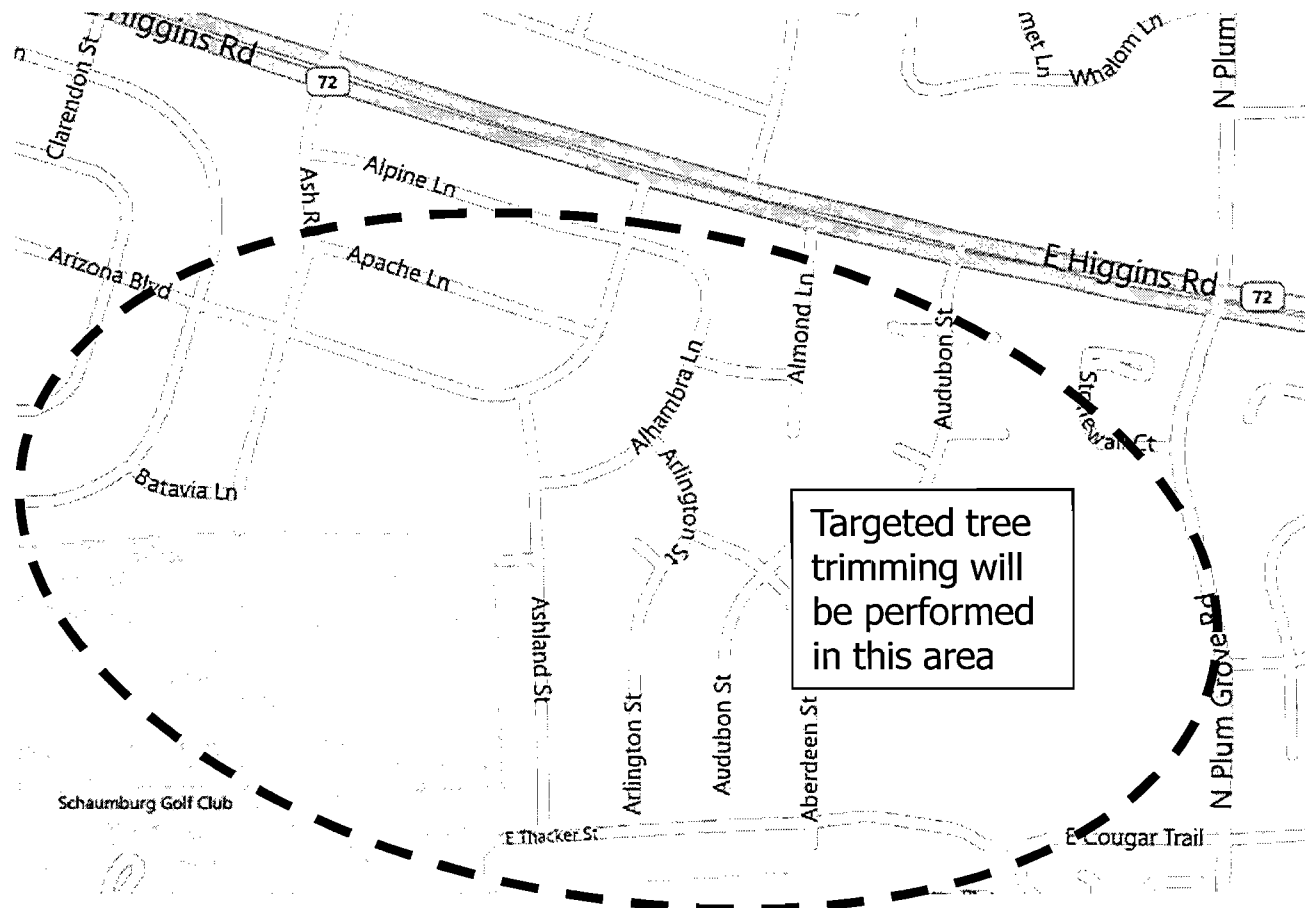
Hoffman Estates – E Thacker – E5317X



An Exelon Company

Improvements include – Projected to start 2/2012

- Targeted trimming in this area
- This area has been affected by feeder lockouts. There have been 3 in 2011 and 2 in 2010. The main driver was lightning. The area was reviewed and it was determined that the lightning protection was adequate.



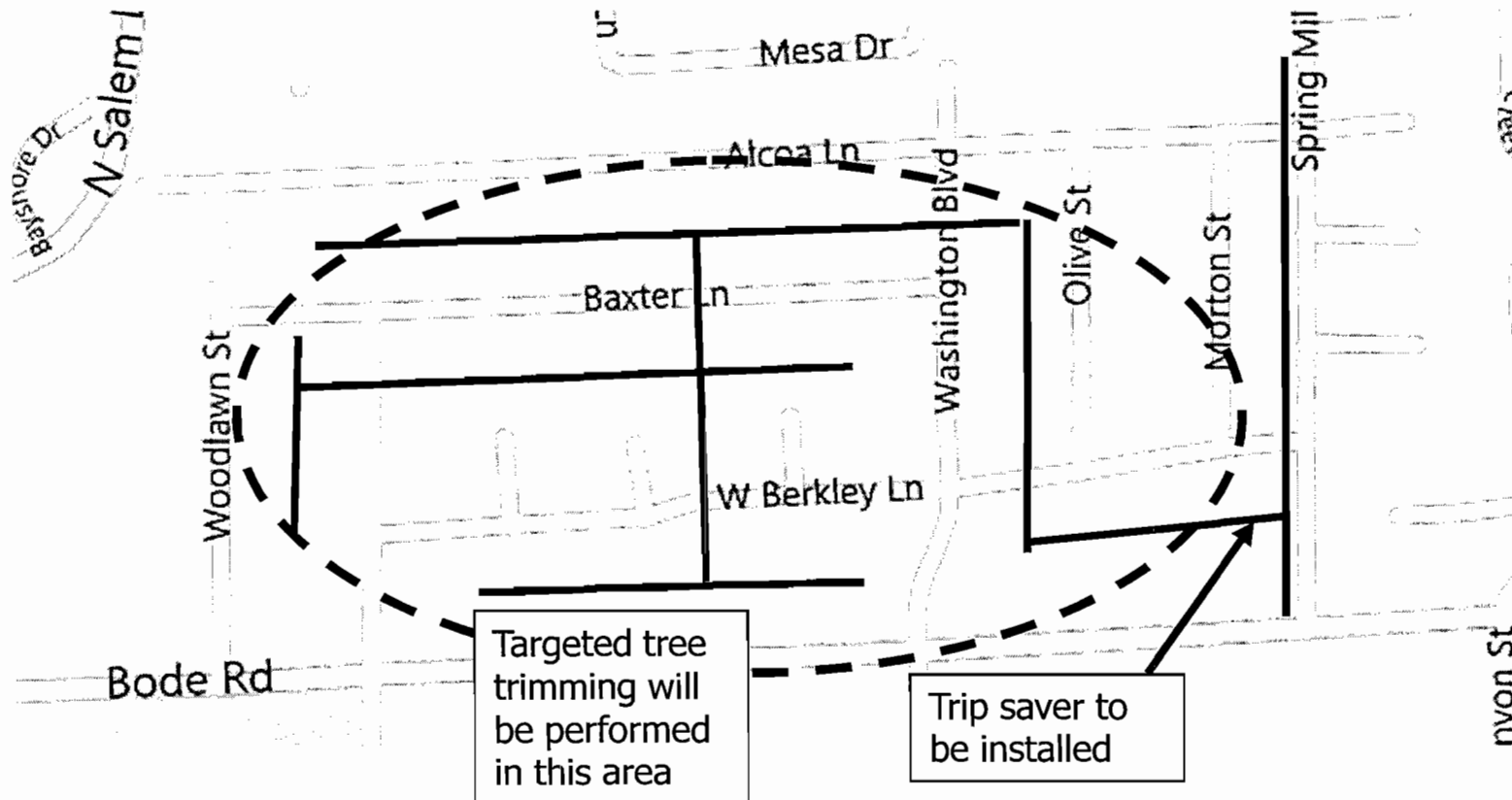
Hoffman Estates –Berkley and Washington – E141Y



An Exelon Company

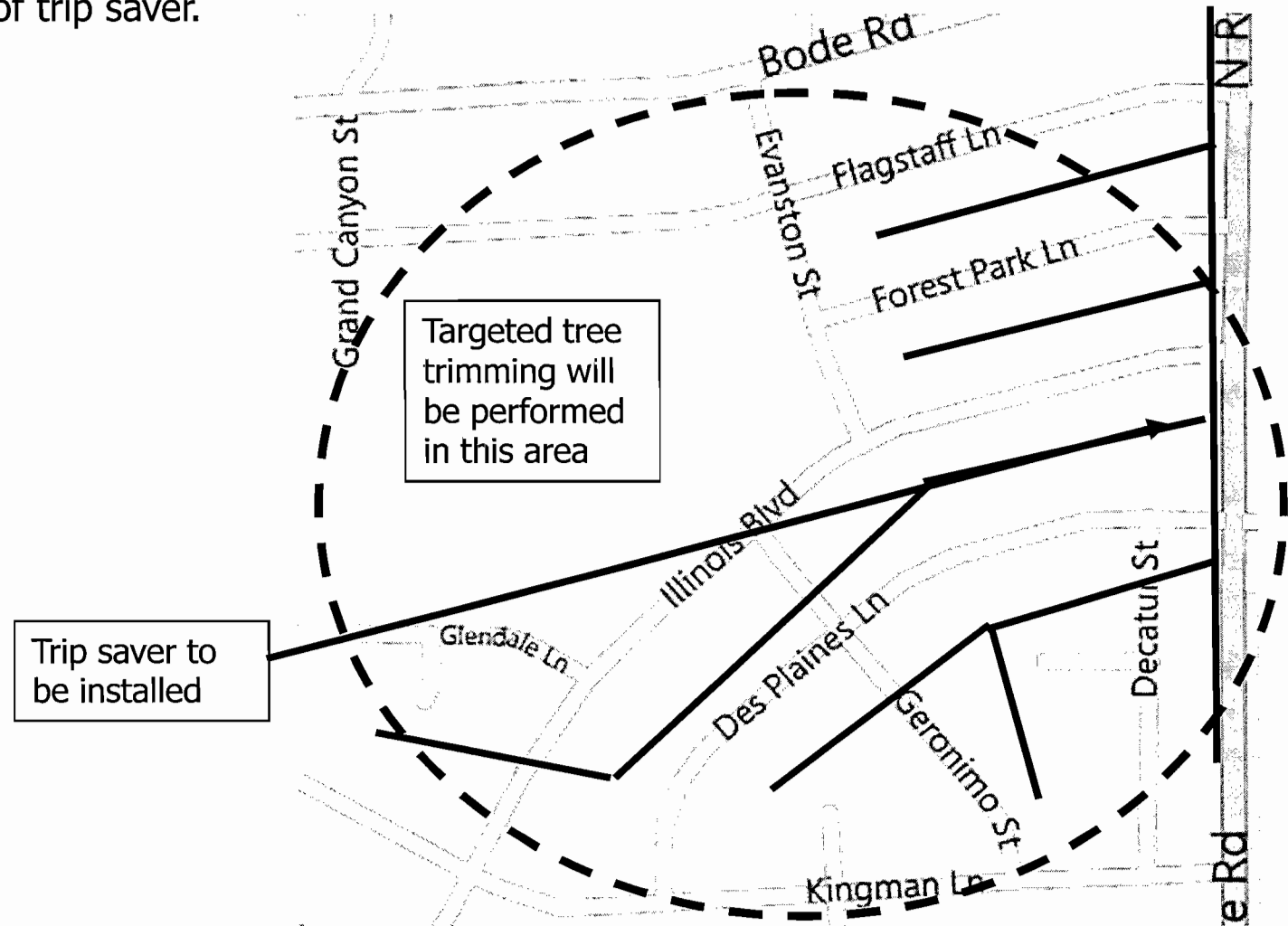
Improvements Include – Projected to start 2/2012

- Targeted tree trimming.
- Installation of trip saver.



Improvements Include – Projected to start 2/2012

- Targeted tree trimming.
- Installation of trip saver.



Improvements Include – Projected to start 2/2012

- Targeted tree trimming around Parkview Circle.
- Installation of trip savers at 2 locations.

