

F.A. RTE.	SECTION	COUNTY	TOTAL SHEETS	SHEET NO.
	22712	COOK	11	1
		ILLINOIS	CONTRACT NO. 230272	

PROPOSED SANITARY SEWER REHABILITATION BARRINGTON SQUARE TOWN CENTER

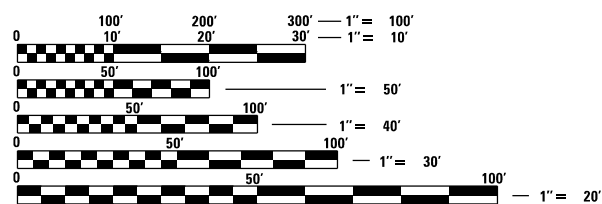
2364 W HIGGINS ROAD
VILLAGE OF HOFFMAN ESTATES
COOK COUNTY, ILLINOIS

INDEX OF SHEETS:

- 1 COVER SHEET
- 2-3 GENERAL NOTES
- 4 ALIGNMENT, TIES & BENCHMARKS
- 5 DETOUR PLAN
- 6-7 EXISTING CONDITIONS
- 8-9 DRAINAGE & UTILITY PLAN
- 10-11 DETAILS

IDOT HIGHWAY STANDARDS:

- 701801-06 SIDEWALK, CORNER OR CROSSWALK CLOSURE
- 701901-06 TRAFFIC CONTROL DEVICES



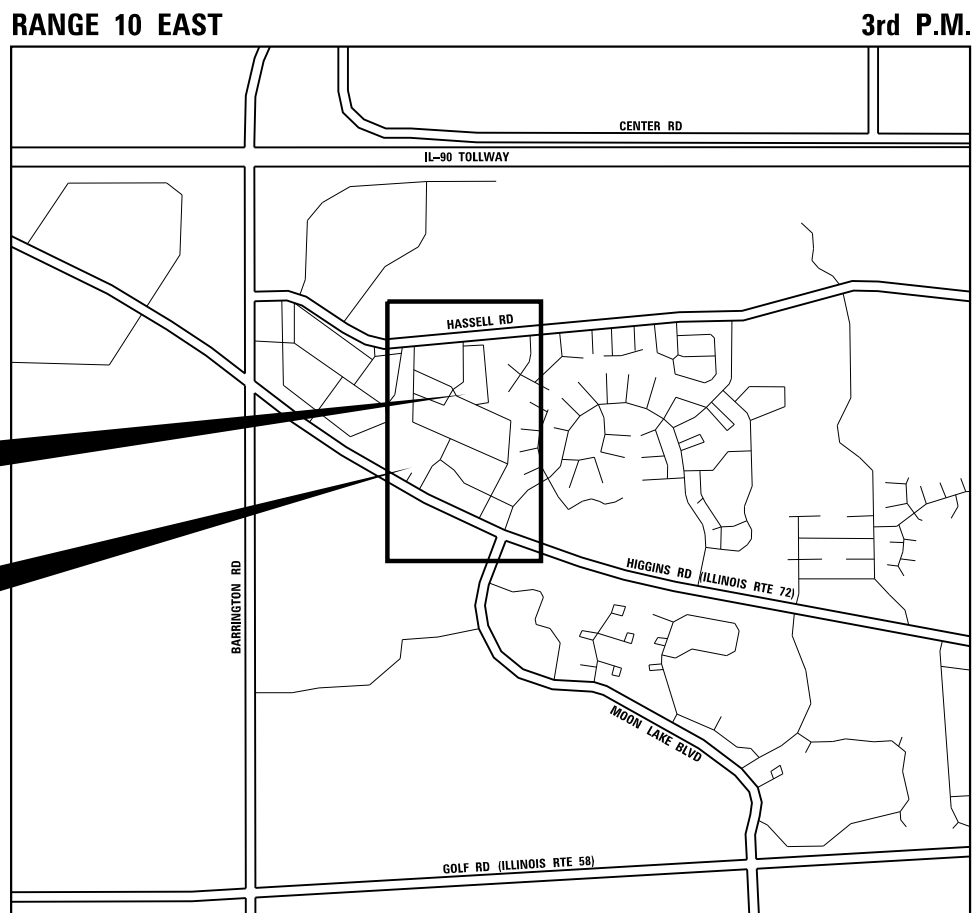
FULL SIZE PLANS HAVE BEEN PREPARED USING STANDARD ENGINEERING SCALES. REDUCED SIZED PLANS WILL NOT CONFORM TO STANDARD SCALES. IN MAKING MEASUREMENTS ON REDUCED PLANS, THE ABOVE SCALES MAY BE USED.

J.U.L.I.E.
JOINT UTILITY LOCATION INFORMATION FOR EXCAVATION
1-800-892-0123
OR 811



DIRECTOR OF ENGINEERING: ALAN WENDERSKI
PROJECT MANAGER: JASON D. HOLY

CONTRACT NO. 230272



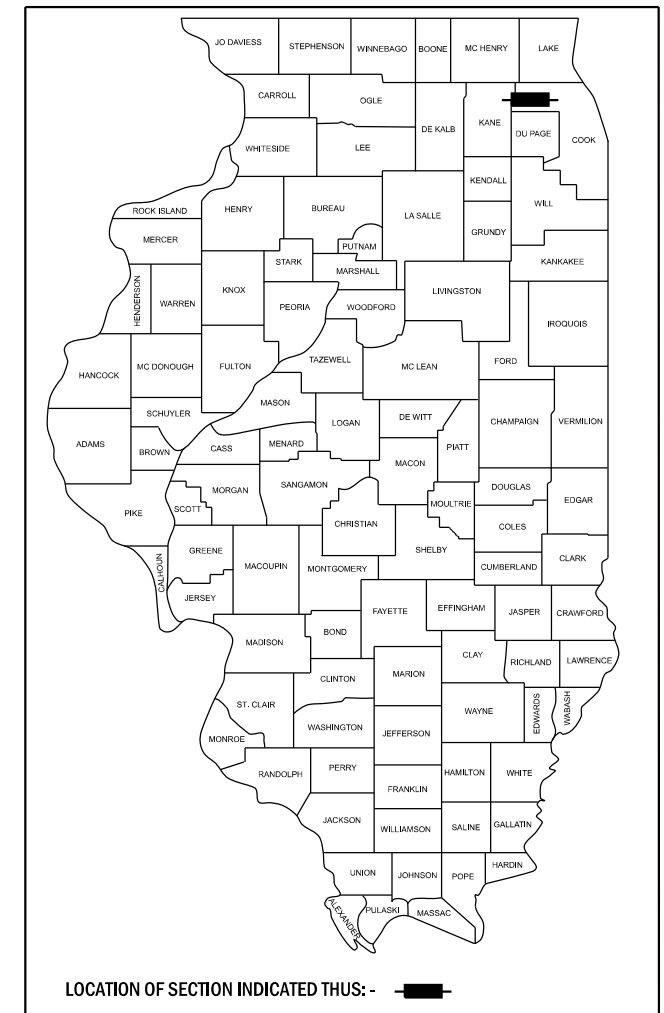
**SANITARY
IMPROVEMENT ENDS
STA. 1011 + 70.55**

**SANITARY
IMPROVEMENT BEGINS
STA. 1004 + 30.93**

SECTION 07
TOWNSHIP 41 NORTH

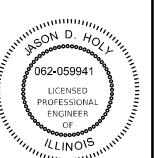
LOCATION MAP
NOT TO SCALE

GROSS LENGTH = 739.62 FT. = 0.140 MILE
NET LENGTH = 739.62 FT. = 0.140 MILE



LOCATION OF SECTION INDICATED THUS: - [black rectangle] -

V3
JASON D. HOLY
062-059941
Jason Holy
DATE: 09-20-2024



EXPIRATION DATE: 11-30-2025

GENERAL NOTES

- ALL EXISTING TOPOGRAPHY, UNDERGROUND UTILITIES, STRUCTURES AND ASSOCIATED FACILITIES SHOWN ON THESE DRAWINGS HAVE BEEN PLOTTED FROM AVAILABLE SURVEYS AND RECORDS. THEREFORE, THEIR LOCATIONS AND ELEVATIONS MUST BE CONSIDERED APPROXIMATE ONLY. THERE MAY BE OTHER FACILITIES, THE EXISTENCE OF WHICH ARE NOT PRESENTLY KNOWN. THE EXACT LOCATIONS AND ELEVATIONS ARE TO BE VERIFIED BY THE CONTRACTOR.
- BEFORE STARTING ANY EXCAVATION, THE CONTRACTOR SHALL CALL "JULIE" AND THE VILLAGE OF HOFFMAN ESTATES FOR FIELD LOCATIONS OF BURIED UTILITIES 48 HOURS IN ADVANCE OF WORK.

ELECTRIC
COMMONWEALTH EDISON
2 LINCOLN CENTER
OAKBROOK TERRACE, IL 60181
(630) 576-7094

CABLE TV
COMCAST CABLE COMMUNICATIONS
MARTHA GIERAS
688 INDUSTRIAL DRIVE
ELMHURST, IL 60126
(224) 229-5862

GAS
NICOR GAS
SAKIBUL FORAH
1844 FERRY ROAD,
NAPERVILLE, IL 60563
(630) 388-2903

TELEPHONE
AT&T
KARI MARTIN
1000 COMMERCE DRIVE,
OAK BROOK, IL 60523
(630) 573-5789

WATER AND SEWER
VILLAGE OF HOFFMAN ESTATES
HAILENG XIAO
2305 PEMBROKE AVENUE,
HOFFMAN ESTATES, IL 60169
(847) 490-6800

- IT SHALL BE THE CONTRACTOR'S RESPONSIBILITY TO FIELD CHECK ALL DIMENSIONS AND ELEVATIONS OF EXISTING UTILITY LINES AND STRUCTURES THAT MAY BE IMPACTED BY THE PROPOSED WORK PRIOR TO ORDERING MATERIAL OR BEGINNING CONSTRUCTION. ANY DISCREPANCIES FROM THE PLANS SHALL BE REPORTED TO THE ENGINEER IMMEDIATELY.
- ANY DAMAGE TO EXISTING UTILITIES SHALL BE REPAIRED BY THE UTILITY COMPANY AT THE CONTRACTOR'S EXPENSE.
- THE CONTRACTOR SHALL USE ALL NECESSARY PRECAUTIONARY AND PROTECTIVE MEASURES REQUIRED TO MAINTAIN AND PROTECT EXISTING UTILITIES, SEWERS, MAINS AND APPURTENANCES THAT MUST BE KEPT IN OPERATION. IN PARTICULAR, THE CONTRACTOR SHALL TAKE ADEQUATE MEASURES TO PREVENT THE UNDERMINING OF UTILITIES, SEWERS AND MAINS WHICH WILL REMAIN IN SERVICE. THE CONTRACTOR SHALL COORDINATE WITH THE ENGINEER AND UTILITY COMPANY IF IT IS DETERMINED THAT TEMPORARY BRACING OR SUPPORT OF THE UTILITIES IS REQUIRED. THE PROTECTION AND/OR TEMPORARY BRACING OR SUPPORT OF UTILITIES WILL NOT BE PAID FOR SEPARATELY BUT SHALL BE CONSIDERED AS INCLUDED IN THE UNIT BID PRICES OF THE CONTRACT AND NO ADDITIONAL COMPENSATION WILL BE ALLOWED.
- THE CONTRACTOR WILL NOT BE PERMITTED TO SET UP A YARD OR FIELD OFFICE ON STATE OR VILLAGE PROPERTY WITHOUT PRIOR WRITTEN PERMISSION OF THE DEPARTMENT.
- WHERE SECTION OR SUBSECTION MONUMENTS ARE ENCOUNTERED, THE ENGINEER SHALL BE NOTIFIED BEFORE SUCH MONUMENTS ARE DISTURBED. THE CONTRACTOR SHALL CAREFULLY PRESERVE ALL PROPERTY MARKERS AND MONUMENTS UNTIL THE OWNER, AN AUTHORIZED SURVEYOR OR AGENT HAS WITNESSED OR OTHERWISE REFERENCED EACH LOCATION.
- ALL APPLICABLE PROVISIONS OF THE CURRENT OCCUPATIONAL SAFETY AND HEALTH ACT ARE HEREIN INCORPORATED BY REFERENCE.
- EXCEPT WHERE MODIFIED BY THE CONTRACT DOCUMENTS, ALL WORK PROPOSED HEREON SHALL BE IN ACCORDANCE WITH THE FOLLOWING SPECIFICATIONS WHICH ARE HEREBY MADE A PART HEREOF:
 - "STANDARD SPECIFICATIONS FOR ROAD AND BRIDGE CONSTRUCTION IN ILLINOIS," AS PREPARED BY IDOT, LATEST EDITION.
 - "SUPPLEMENTAL SPECIFICATIONS AND RECURRING SPECIAL PROVISIONS," AS PREPARED BY IDOT, LATEST EDITION.
 - THE LATEST EDITIONS OF THE MUNICIPAL CODE AND STANDARDS OF THE VILLAGE/CITY OF HOFFMAN ESTATES.
 - THE ILLINOIS ACCESSIBILITY CODE.
 - "MANUAL ON UNIFORM TRAFFIC CONTROL DEVICES FOR STREETS AND HIGHWAYS," LATEST EDITION.
 - "STANDARD SPECIFICATIONS FOR WATER AND SEWER MAIN CONSTRUCTION IN ILLINOIS AS PUBLISHED BY THE IEPA," LATEST EDITION.
 - ILLINOIS RECOMMENDED STANDARDS FOR SEWAGE WORKS," AS PUBLISHED BY THE IEPA, LATEST EDITION.
 - "MANUAL OF TEST PROCEDURES FOR MATERIALS," LATEST EDITION
 - "ILLINOIS URBAN MANUAL," LATEST EDITION

- STREET PAVING AND CURBS TO REMAIN SHALL BE PROTECTED FROM DAMAGE. IF DAMAGED, IT SHALL BE REPLACED PROMPTLY IN CONFORMANCE WITH THE MUNICIPALITY OR IDOT STANDARD SPECIFICATIONS IN MATERIALS AND WORKMANSHIP AND AT THE CONTRACTOR'S EXPENSE.
- PROPOSED ELEVATIONS INDICATE FINISHED CONDITIONS. FOR ROUGH GRADING ELEVATIONS ALLOW FOR THICKNESS OF PROPOSED PAVING (ROADS, WALKS, DRIVES, ETC.) OR TOPSOIL AS INDICATED ON DRAWINGS.
- THE ENGINEER AND VILLAGE OF HOFFMAN ESTATES ARE NOT RESPONSIBLE FOR THE CONSTRUCTION MEANS, METHODS, TECHNIQUES, SEQUENCES OR PROCEDURES, TIME OF PERFORMANCE, PROGRAMS OR ANY SAFETY PRECAUTIONS USED BY THE CONTRACTOR. THE CONTRACTOR IS SOLELY RESPONSIBLE FOR EXECUTION OF HIS/HER WORK IN ACCORDANCE WITH THE CONTRACT DOCUMENTS AND SPECIFICATIONS.
- THE CONTRACTOR IS RESPONSIBLE FOR HAVING A SET OF "APPROVED" ENGINEERING PLANS WITH THE LATEST REVISION DATE ON THE JOB SITE PRIOR TO THE START OF CONSTRUCTION AND AT ALL TIMES DURING CONSTRUCTION.
- AREAS OUTSIDE THE R.O.W. LINE OR CONSTRUCTION LIMIT LINE IMPACTED BY OPERATIONS OF THE CONTRACTOR SHALL BE RETURNED TO THE STATE IT WAS FOUND PRIOR TO NEW CONSTRUCTION, EXCEPT WHERE NEW WORK IS SHOWN.
- CONTRACTOR SHALL MAINTAIN ACCESS TO ALL PROPERTIES AND SIDE ROADS DURING CONSTRUCTION OPERATIONS.

MAINTENANCE OF TRAFFIC NOTES

- TRAFFIC CONTROL AND PROTECTION SHALL BE PERFORMED IN ACCORDANCE WITH THE MAINTENANCE OF TRAFFIC NOTES AND PROTECTION SECTION 701 OF THE STANDARD SPECIFICATIONS.
- THE CONTRACTOR SHALL BE RESPONSIBLE FOR THE INSTALLATION AND MAINTENANCE OF ADEQUATE SIGNS, TRAFFIC CONTROL DEVICES AND WARNING DEVICES TO INFORM AND PROTECT THE PUBLIC DURING ALL PHASES OF CONSTRUCTION. BARRICADES AND WARNING SIGNS SHALL BE PROVIDED IN ACCORDANCE WITH ARTICLE 107.14 OF THE IDOT STANDARD SPECIFICATIONS. ALL TRAFFIC CONTROL WORK SHALL BE DONE IN ACCORDANCE WITH IDOT "MANUAL ON UNIFORM TRAFFIC CONTROL DEVICES."
- ALL SIGNS SHALL BE IN ACCORDANCE WITH IDOT STANDARD SPECIFICATIONS, LATEST EDITION, AND THE MANUAL ON UNIFORM TRAFFIC CONTROL DEVICES, LATEST EDITION.
- THE COST OF SUPPLYING, ERECTING, AND MAINTAINING TRAFFIC CONTROL DEVICES, LIGHTS, AND SIGNS SHALL BE INCLUDED IN THE CONTRACT PRICE FOR "TRAFFIC CONTROL AND PROTECTION, (SPECIAL)".
- THE CONTRACTOR SHALL PERFORM ALL WORK BETWEEN THE WEEKDAY HOURS OF 9:00AM AND 3:30PM, UNLESS OTHERWISE ALLOWED BY THE ENGINEER.
- ALL TRAFFIC CONTROL DEVICES SHALL BE MAINTAINED THROUGH THE COMPLETION OF THE CONTRACT.
- SIGNAGE SHOWN IN THE DETOUR PLANS ARE RELOCATED EXISTING SIGNS. ALL SIGNAGE SHALL BE KEPT IN THE CONDITION IT WAS REMOVED IN, OR SHALL BE REPLACED IN KIND AT THE EXPENSE OF THE CONTRACTOR.
- WORK ZONE SIGNING AND STRIPING SHALL BE DONE IN ACCORDANCE WITH IDOT STANDARD 701801 AND 701901

SPECIAL PROVISION	CODE NO.	ITEM	UNIT	TOTAL QUANTITY
*	HE563900	LIVE SEWER BYPASS	L SUM	1
*	HE701014	TRAFFIC CONTROL & PROTECTION (SPECIAL)	L SUM	1
*	X5538000	HEAVY CLEANING	FOOT	740
*	X5630227	CUR-IN-PL PIPE LINER 27"	FOOT	740

MODEL: Default
FILE NAME: N:\2302272\Drawings\Main\CADD_Sheets\2302272\sh-ho-0101 - 1.dwg.plt



V3 Companies
7325 Janes Avenue
Woodridge, IL 60517
630.724.9200 phone
630.724.9202 fax
www.v3co.com

USER NAME = cdonahue	DESIGNED - _____	REVISED - _____	REVISED - _____
	DRAWN - _____	REVISED - _____	REVISED - _____
PLOT SCALE =	CHECKED - _____	REVISED - _____	REVISED - _____
PLOT DATE = 8/29/2024	DATE - _____	REVISED - _____	REVISED - _____

**PROPOSED SANITARY SEWER REHABILITATION
BARRINGTON SQUARE TOWN CENTER**

GENERAL NOTES

A. REFERENCED SPECIFICATIONS

- ALL CONSTRUCTION SHALL BE IN ACCORDANCE WITH THE APPLICABLE SECTIONS OF THE FOLLOWING, EXCEPT AS MODIFIED HEREIN OR ON THE PLANS:
 * STANDARD SPECIFICATIONS FOR ROAD AND BRIDGE CONSTRUCTION (LATEST EDITION), BY THE ILLINOIS DEPARTMENT OF TRANSPORTATION (IDOT SS) FOR ALL IMPROVEMENTS EXCEPT SANITARY SEWER AND WATER MAIN CONSTRUCTION;
 * STANDARD SPECIFICATIONS FOR WATER AND SEWER MAIN CONSTRUCTION IN ILLINOIS, LATEST EDITION (SSWS) FOR SANITARY SEWER AND WATER MAIN CONSTRUCTION;
 * VILLAGE OF HOFFMAN EST. MUNICIPAL CODE;
 * THE METROPOLITAN WATER RECLAMATION DISTRICT OF GREATER CHICAGO (MWRD) WATERSHED MANAGEMENT ORDINANCE AND TECHNICAL GUIDANCE MANUAL;
 * IN CASE OF CONFLICT BETWEEN THE APPLICABLE ORDINANCES NOTED, THE MORE STRINGENT SHALL TAKE PRECEDENCE AND SHALL CONTROL ALL CONSTRUCTION.

B. NOTIFICATIONS

- THE MWRD LOCAL SEWER SYSTEMS SECTION FIELD OFFICE MUST BE NOTIFIED AT LEAST TWO (2) WORKING DAYS PRIOR TO THE COMMENCEMENT OF ANY WORK (CALL 708-588-4055 OR SEND EMAIL NOTIFICATION WITH PROJECT NAME, LOCATION AND PERMIT NUMBER TO WMOJOBSTART@MWRD.ORG).
 HOFFMAN
- THE VILLAGE OF ESTATES ENGINEERING DEPARTMENT AND PUBLIC MUST BE NOTIFIED AT LEAST 24 HOURS PRIOR TO THE START OF CONSTRUCTION AND PRIOR TO EACH PHASE OF WORK. CONTRACTOR SHALL DETERMINE ITEMS REQUIRING INSPECTION PRIOR TO START OF CONSTRUCTION OR EACH WORK PHASE.
- THE CONTRACTOR SHALL NOTIFY ALL UTILITY COMPANIES PRIOR TO BEGINNING CONSTRUCTION FOR THE EXACT LOCATIONS OF UTILITIES AND FOR THEIR PROTECTION DURING CONSTRUCTION. IF EXISTING UTILITIES ARE ENCOUNTERED THAT CONFLICT IN LOCATION WITH NEW CONSTRUCTION, IMMEDIATELY NOTIFY THE ENGINEER SO THAT THE CONFLICT CAN BE RESOLVED. CALL J.U.L.I.E. AT 1-800-892-0123.

C. GENERAL NOTES

- ALL ELEVATIONS SHOWN ON PLANS REFERENCE THE NORTH AMERICAN VERTICAL DATUM OF 1988 (NAVD88). CONVERSION FACTOR IS _____ FT.
- MWRD, THE MUNICIPALITY AND THE OWNER OR OWNER'S REPRESENTATIVE SHALL HAVE THE AUTHORITY TO INSPECT, APPROVE, AND REJECT THE CONSTRUCTION IMPROVEMENTS.
- THE CONTRACTOR(S) SHALL INDEMNIFY THE OWNER, ENGINEER, MUNICIPALITY, MWRD, AND THEIR AGENTS, ETC., FROM ALL LIABILITY INVOLVED WITH THE CONSTRUCTION, INSTALLATION, OR TESTING OF THIS WORK ON THE PROJECT.
- THE PROPOSED IMPROVEMENTS MUST BE CONSTRUCTED IN ACCORDANCE WITH THE ENGINEERING PLANS AS APPROVED BY MWRD AND THE MUNICIPALITY UNLESS CHANGES ARE APPROVED BY MWRD, THE MUNICIPALITY, OR AUTHORIZED AGENT. THE CONSTRUCTION DETAILS, AS PRESENTED ON THE PLANS, MUST BE FOLLOWED. PROPER CONSTRUCTION TECHNIQUES MUST BE FOLLOWED ON THE IMPROVEMENTS INDICATED ON THE PLANS.
- THE LOCATION OF VARIOUS UNDERGROUND UTILITIES WHICH ARE SHOWN ON THE PLANS ARE FOR INFORMATION ONLY AND REPRESENT THE BEST KNOWLEDGE OF THE ENGINEER. VERIFY LOCATIONS AND ELEVATIONS PRIOR TO BEGINNING THE CONSTRUCTION OPERATIONS.
- ANY EXISTING PAVEMENT, SIDEWALK, DRIVEWAY, ETC., DAMAGED DURING CONSTRUCTION OPERATIONS AND NOT CALLED FOR TO BE REMOVED SHALL BE REPLACED AT THE EXPENSE OF THE CONTRACTOR.
- MATERIAL AND COMPACTION TESTING SHALL BE PERFORMED IN ACCORDANCE WITH THE REQUIREMENTS OF THE MUNICIPALITY, MWRD, AND OWNER.
- THE UNDERGROUND CONTRACTOR SHALL MAKE ALL NECESSARY ARRANGEMENTS TO NOTIFY ALL INSPECTION AGENCIES.
- ALL NEW AND EXISTING UTILITY STRUCTURES ON SITE AND IN AREAS DISTURBED DURING CONSTRUCTION SHALL BE ADJUSTED TO FINISH GRADE PRIOR TO FINAL INSPECTION.
- RECORD DRAWINGS SHALL BE KEPT BY THE CONTRACTOR AND SUBMITTED TO THE ENGINEER AS SOON AS UNDERGROUND IMPROVEMENTS ARE COMPLETED. FINAL PAYMENTS TO THE CONTRACTOR SHALL BE HELD UNTIL THEY ARE RECEIVED. ANY CHANGES IN LENGTH, LOCATION OR ALIGNMENT SHALL BE SHOWN IN RED. ALL WYES OR BENDS SHALL BE LOCATED FROM THE DOWNSTREAM MANHOLE. ALL VALVES, B-BOXES, TEES OR BENDS SHALL BE TIED TO A FIRE HYDRANT.

D. SANITARY SEWER

- THE CONTRACTOR SHALL TAKE MEASURES TO PREVENT ANY POLLUTED WATER, SUCH AS GROUND AND SURFACE WATER, FROM ENTERING THE EXISTING SANITARY SEWERS.
- A WATER-TIGHT PLUG SHALL BE INSTALLED IN THE DOWNSTREAM SEWER PIPE AT THE POINT OF SEWER CONNECTION PRIOR TO COMMENCING ANY SEWER CONSTRUCTION. THE PLUG SHALL REMAIN IN PLACE UNTIL REMOVAL IS AUTHORIZED BY THE MUNICIPALITY AND/OR MWRD AFTER THE SEWERS HAVE BEEN TESTED AND ACCEPTED.
- DISCHARGING ANY UNPOLLUTED WATER INTO THE SANITARY SEWER SYSTEM FOR THE PURPOSE OF SEWER FLUSHING OF LINES FOR THE DEFLECTION TEST SHALL BE PROHIBITED WITHOUT PRIOR APPROVAL FROM THE MUNICIPALITY OR MWRD.
- ALL SANITARY SEWER CONSTRUCTION SHALL BE IN ACCORDANCE WITH THE STANDARD SPECIFICATIONS FOR WATER AND SEWER MAIN CONSTRUCTION IN ILLINOIS (LATEST EDITION).
- ALL FLOOR DRAINS SHALL DISCHARGE TO THE SANITARY SEWER SYSTEM.
- ALL DOWNSPOUTS AND FOOTING DRAINS SHALL DISCHARGE TO THE STORM SEWER SYSTEM.
- ALL SANITARY SEWER PIPE MATERIALS AND JOINTS (AND STORM SEWER PIPE MATERIALS AND JOINTS IN A COMBINED SEWER AREA) SHALL CONFORM TO THE FOLLOWING:

PIPE MATERIAL

VITRIFIED CLAY PIPE	ASTM C-700	ASTM C-425
REINFORCED CONCRETE SEWER PIPE	ASTM C-76	ASTM C-443
CAST IRON SOIL PIPE	ASTM A-74	ASTM C-564
DUCTILE IRON PIPE	ANSI A21.51	ANSI A21.11
POLYVINYL CHLORIDE (PVC) PIPE		
4-INCH TO 15-INCH DIAMETER SDR 26	ASTM D-3034	ASTM D-3212
18-INCH TO 27-INCH DIAMETER F/DY=46	ASTM F-679	ASTM D-3212
HIGH DENSITY POLYETHYLENE (HDPE)	ASTM D-3350	ASTM D-3261,F-2520 (HEAT FUSION)
	ASTM D-3035	ASTM D-3212,F-477 (GASKETED)
WATER MAIN QUALITY PVC		
4-INCH TO 36-INCH	ASTM D-2241	ASTM D-3139
4-INCH TO 12-INCH	AWWA C900	ASTM D-3139
14-INCH TO 48-INCH	AWWA C905	ASTM D-3139

PIPE SPECIFICATIONS

JOINT SPECIFICATIONS

THE FOLLOWING MATERIALS ARE ALLOWED ON A QUALIFIED BASIS SUBJECT TO DISTRICT REVIEW AND APPROVAL PRIOR TO PERMIT ISSUANCE. A SPECIAL CONDITION WILL BE ADDED TO THE PERMIT WHEN THE PIPE MATERIAL BELOW IS USED FOR SEWER CONSTRUCTION OR A CONNECTION IS MADE.

PIPE MATERIAL

POLYPROPYLENE (PP) PIPE

12-INCH TO 24-INCH DOUBLE WALL	ASTM F-2736	D-3212, F-477
30-INCH TO 60-INCH TRIPLE WALL	ASTM F-2764	D3212, F-477

PIPE SPECIFICATIONS

JOINT SPECIFICATIONS

- ALL SANITARY SEWER CONSTRUCTION (AND STORM SEWER CONSTRUCTION IN COMBINED SEWER AREAS), REQUIRES STONE BEDDING WITH STONE ¼ " TO 1" IN SIZE, WITH MINIMUM BEDDING THICKNESS EQUAL TO ¼ THE OUTSIDE DIAMETER OF THE SEWER PIPE, BUT NOT LESS THAN FOUR (4) INCHES NOR MORE THAN EIGHT (8) INCHES. MATERIAL SHALL BE CA-7, CA-11 OR CA-13 AND SHALL BE EXTENDED AT LEAST 12" ABOVE THE TOP OF THE PIPE WHEN USING PVC.
- NON-SHEAR FLEXIBLE-TYPE COUPLINGS SHALL BE USED IN THE CONNECTION OF SEWER PIPES OF DISSIMILAR PIPE MATERIALS.
- ALL MANHOLES SHALL BE PROVIDED WITH BOLTED, WATERTIGHT COVERS. SANITARY LIDS SHALL BE CONSTRUCTED WITH A CONCEALED PICKHOLE AND WATERTIGHT GASKET WITH THE WORD "SANITARY" CAST INTO THE LID.
- WHEN CONNECTING TO AN EXISTING SEWER MAIN BY MEANS OTHER THAN AN EXISTING WYE, TEE, OR AN EXISTING MANHOLE, ONE OF THE FOLLOWING METHODS SHALL BE USED:
 a) A CIRCULAR SAW-CUT OF SEWER MAIN BY PROPER TOOLS ("SEWER-TAP" MACHINE OR SIMILAR) AND PROPER INSTALLATION OF HUBWYE SADDLE OR HUB-TEE SADDLE.
 b) REMOVE AN ENTIRE SECTION OF PIPE (BREAKING ONLY THE TOP OF ONE BELL) AND REPLACE WITH A WYE OR TEE BRANCH SECTION.
 c) WITH PIPE CUTTER, NEATLY AND ACCURATELY CUT OUT DESIRED LENGTH OF PIPE FOR INSERTION OF PROPER FITTING, USING "BAND SEAL" OR SIMILAR COUPLINGS TO HOLD IT FIRMLY IN PLACE.
- WHENEVER A SANITARY/COMBINED SEWER CROSSES UNDER A WATERMAIN, THE MINIMUM VERTICAL DISTANCE FROM THE TOP OF THE SEWER TO THE BOTTOM OF THE WATERMAIN SHALL BE 18 INCHES. FURTHERMORE, A MINIMUM HORIZONTAL DISTANCE OF 10 FEET BETWEEN SANITARY/COMBINED SEWERS AND WATERMANS SHALL BE MAINTAINED UNLESS: THE SEWER IS LAID IN A SEPARATE TRENCH, KEEPING A MINIMUM 18" VERTICAL SEPARATION; OR THE SEWER IS LAID IN THE SAME TRENCH WITH THE WATERMAIN LOCATED AT THE OPPOSITE SIDE ON A BENCH OF UNDISTURBED EARTH, KEEPING A MINIMUM 18" VERTICAL SEPARATION. IF EITHER THE VERTICAL OR HORIZONTAL DISTANCES DESCRIBED CANNOT BE MAINTAINED, OR THE SEWER CROSSES ABOVE THE WATER MAIN, THE SEWER SHALL BE CONSTRUCTED TO WATER MAIN STANDARDS OR IT SHALL BE ENCASED WITH A WATER MAIN QUALITY CARRIER PIPE WITH THE ENDS SEALED.
- ALL EXISTING SEPTIC SYSTEMS SHALL BE ABANDONED. ABANDONED TANKS SHALL BE FILLED WITH GRANULAR MATERIAL OR REMOVED.
- ALL SANITARY MANHOLES, (AND STORM MANHOLES IN COMBINED SEWER AREAS), SHALL HAVE A MINIMUM INSIDE DIAMETER OF 48 INCHES, AND SHALL BE CAST IN PLACE OR PRE-CAST REINFORCED CONCRETE.
- ALL SANITARY MANHOLES, (AND STORM MANHOLES IN COMBINED SEWER AREAS), SHALL HAVE PRECAST "RUBBER BOOTS" THAT CONFORM TO ASTM C-923 FOR ALL PIPE CONNECTIONS. PRECAST SECTIONS SHALL CONSIST OF MODIFIED GROOVE TONGUE AND RUBBER GASKET TYPE JOINTS.
- ALL ABANDONED SANITARY SEWERS SHALL BE PLUGGED AT BOTH ENDS WITH AT LEAST 2 FEET LONG NON-SHRINK CONCRETE OR MORTAR PLUG.
- EXCEPT FOR FOUNDATION/FOOTING DRAINS PROVIDED TO PROTECT BUILDINGS, OR PERFORATED PIPES ASSOCIATED WITH VOLUME CONTROL FACILITIES, DRAIN TILES/FIELD TILES/UNDERDRAINS/PERFORATED PIPES ARE NOT ALLOWED TO BE CONNECTED TO OR TRIBUTARY TO COMBINED SEWERS, SANITARY SEWERS, OR STORM SEWERS TRIBUTARY TO COMBINED SEWERS IN COMBINED SEWER AREAS. CONSTRUCTION OF NEW FACILITIES OF THIS TYPE IS PROHIBITED; AND ALL EXISTING DRAIN TILES AND PERFORATED PIPES ENCOUNTERED WITHIN THE PROJECT AREA SHALL BE PLUGGED OR REMOVED, AND SHALL NOT BE CONNECTED TO COMBINED SEWERS, SANITARY SEWERS, OR STORM SEWERS TRIBUTARY TO COMBINED SEWERS.
- A BACKFLOW PREVENTER IS REQUIRED FOR ALL DETENTION BASINS TRIBUTARY TO COMBINED SEWERS. REQUIRED BACKFLOW PREVENTERS SHALL BE INSPECTED AND EXERCISED ANNUALLY BY THE PROPERTY OWNER TO ENSURE PROPER OPERATION, AND ANY NECESSARY MAINTENANCES SHALL BE PERFORMED TO ENSURE FUNCTIONALITY. IN THE EVENT OF A SEWER SURCHARGE INTO AN OPEN DETENTION BASIN TRIBUTARY TO COMBINED SEWERS, THE PERMITTEE SHALL ENSURE THAT CLEAN UP AND WASH OUT OF SEWAGE TAKES PLACE WITHIN 48 HOURS OF THE STORM EVENT.

E. EROSION AND SEDIMENT CONTROL

- THE CONTRACTOR SHALL INSTALL THE EROSION AND SEDIMENT CONTROL DEVICES AS SHOWN ON THE APPROVED EROSION AND SEDIMENT CONTROL PLAN.
- EROSION AND SEDIMENT CONTROL PRACTICES SHALL BE FUNCTIONAL PRIOR TO HYDROLOGIC DISTURBANCE OF THE SITE.
- ALL DESIGN CRITERIA, SPECIFICATIONS, AND INSTALLATION OF EROSION AND SEDIMENT CONTROL PRACTICES SHALL BE IN ACCORDANCE WITH THE ILLINOIS URBAN MANUAL.
- A COPY OF THE APPROVED EROSION AND SEDIMENT CONTROL PLAN SHALL BE MAINTAINED ON THE SITE AT ALL TIMES.
- INSPECTIONS AND DOCUMENTATION SHALL BE PERFORMED, AT A MINIMUM:
 a) UPON COMPLETION OF INITIAL EROSION AND SEDIMENT CONTROL MEASURES, PRIOR TO ANY SOIL DISTURBANCE.
 b) ONCE EVERY SEVEN (7) CALENDAR DAYS AND WITHIN 24 HOURS OF THE END OF A STORM EVENT WITH GREATER THAN 0.5 INCH OF RAINFALL OR LIQUID EQUIVALENT PRECIPITATION.
- SOIL DISTURBANCE SHALL BE CONDUCTED IN SUCH A MANNER AS TO MINIMIZE EROSION. IF STRIPPING, CLEARING, GRADING, OR LANDSCAPING ARE TO BE DONE IN PHASES, THE CO-PERMITTEE SHALL PLAN FOR APPROPRIATE SOIL EROSION AND SEDIMENT CONTROL MEASURES.
- A STABILIZED MAT OF CRUSHED STONE MEETING THE STANDARDS OF THE ILLINOIS URBAN MANUAL SHALL BE INSTALLED AT ANY POINT WHERE TRAFFIC WILL BE ENTERING OR LEAVING A CONSTRUCTION SITE. SEDIMENT OR SOIL REACHING AN IMPROVED PUBLIC RIGHT-OF-WAY, STREET, ALLEY OR PARKING AREA SHALL BE REMOVED BY SCRAPING OR STREET CLEANING AS ACCUMULATIONS WARRANT AND TRANSPORTED TO A CONTROLLED SEDIMENT DISPOSAL AREA.
- CONCRETE WASHOUT FACILITIES SHALL BE CONSTRUCTED IN ACCORDANCE WITH THE ILLINOIS URBAN MANUAL AND SHALL BE INSTALLED PRIOR TO ANY ON SITE CONSTRUCTION ACTIVITIES INVOLVING CONCRETE.
- MORTAR WASHOUT FACILITIES SHALL BE CONSTRUCTED IN ADDITION TO CONCRETE WASHOUT FACILITIES FOR ANY BRICK AND MORTAR BUILDING ENVELOPE CONSTRUCTION ACTIVITIES.
- TEMPORARY DIVERSIONS SHALL BE CONSTRUCTED AS NECESSARY TO DIRECT ALL RUNOFF FROM HYDROLOGICALLY DISTURBED AREAS TO AN APPROPRIATE SEDIMENT TRAP OR BASIN. VOLUME CONTROL FACILITIES SHALL NOT BE USED AS TEMPORARY SEDIMENT BASINS.
- DISTURBED AREAS OF THE SITE WHERE CONSTRUCTION ACTIVITIES HAVE TEMPORARILY OR PERMANENTLY CEASED SHALL BE STABILIZED WITH TEMPORARY OR PERMANENT MEASURES WITHIN SEVEN (7) DAYS.
- ALL FLOOD PROTECTION AREAS AND VOLUME CONTROL FACILITIES SHALL, AT A MINIMUM, BE PROTECTED WITH A DOUBLE-ROW OF SILT FENCE (OR EQUIVALENT).
- VOLUME CONTROL FACILITIES SHALL NOT BE CONSTRUCTED UNTIL ALL OF THE CONTRIBUTING DRAINAGE AREA HAS BEEN STABILIZED.
- SOIL STOCKPILES SHALL, AT A MINIMUM, BE PROTECTED WITH PERIMETER SEDIMENT CONTROLS. SOIL STOCKPILES SHALL NOT BE PLACED IN FLOOD PROTECTION AREAS OR THEIR BUFFERS.
- EARTHEN EMBANKMENT SIDE SLOPES SHALL BE STABILIZED WITH APPROPRIATE EROSION CONTROL BLANKET.
- STORM SEWERS THAT ARE OR WILL BE FUNCTIONING DURING CONSTRUCTION SHALL BE PROTECTED BY APPROPRIATE SEDIMENT CONTROL MEASURES.
- THE CONTRACTOR SHALL EITHER REMOVE OR REPLACE ANY EXISTING DRAIN TILES AND INCORPORATE THEM INTO THE DRAINAGE PLAN FOR THE DEVELOPMENT. DRAIN TILES CANNOT BE TRIBUTARY TO A SANITARY OR COMBINED SEWER. DRAIN TILES ALLOWED IN COMBINED SEWER AREA FOR GREEN INFRASTRUCTURE PRACTICES.
- IF DEWATERING SERVICES ARE USED, ADJOINING PROPERTIES AND DISCHARGE LOCATIONS SHALL BE PROTECTED FROM EROSION AND SEDIMENTATION. DEWATERING SYSTEMS SHOULD BE INSPECTED DAILY DURING OPERATIONAL PERIODS. THE SITE INSPECTOR MUST BE PRESENT AT THE COMMENCEMENT OF DEWATERING ACTIVITIES.
- THE CONTRACTOR SHALL BE RESPONSIBLE FOR TRENCH DEWATERING AND EXCAVATION FOR THE INSTALLATION OF SANITARY SEWERS, STORM SEWERS, WATERMANS AS WELL AS THEIR SERVICES AND OTHER APPURTENANCES. ANY TRENCH DEWATERING, WHICH CONTAINS SEDIMENT SHALL PASS THROUGH A SEDIMENT SETTLING POND OR EQUALLY EFFECTIVE SEDIMENT CONTROL DEVICE. ALTERNATIVES MAY INCLUDE DEWATERING INTO A SUMP PIT, FILTER BAG OR EXISTING VEGETATED UPSLOPE AREA. SEDIMENT LADEN WATERS SHALL NOT BE DISCHARGE TO WATERWAYS, FLOOD PROTECTION AREAS OR THE COMBINED SEWER SYSTEM.
- ALL PERMANENT EROSION CONTROL PRACTICES SHALL BE INITIATED WITHIN SEVEN (7) DAYS FOLLOWING THE COMPLETION OF SOIL DISTURBING ACTIVITIES.
- ALL EROSION AND SEDIMENT CONTROL MEASURES SHALL BE MAINTAINED AND REPAIRED AS NEEDED ON A YEAR-ROUND BASIS DURING CONSTRUCTION AND ANY PERIODS OF CONSTRUCTION SHUTDOWN UNTIL PERMANENT STABILIZATION IS ACHIEVED.
- ALL TEMPORARY EROSION AND SEDIMENT CONTROL MEASURES SHALL BE REMOVED WITHIN THIRTY (30) DAYS AFTER PERMANENT SITE STABILIZATION.
- THE EROSION AND SEDIMENT CONTROL MEASURES SHOWN ON THE PLANS ARE THE MINIMUM REQUIREMENTS. ADDITIONAL MEASURES MAY BE REQUIRED, AS DIRECTED BY THE ENGINEER, SITE INSPECTOR, OR MWRD.

MWRD NOTES

**PROPOSED SANITARY SEWER REHABILITATION
BARRINGTON SQUARE TOWN CENTER**

GENERAL NOTES

HOFFMAN ESTATES

ILLINOIS

SCALE: SHEET 2 OF 2 SHEETS STA. TO STA.

COUNTY	TOTAL SHEETS	SHEET NO.
COOK	11	3

PROJECT NO. 230272

MODEL: Default
FILE NAME: N:\230272\Drawings\Main\CAD - Sheets\230272-shs-GN02 - 1.dwg.dgn



V3 Companies
7325 Janes Avenue
Woodridge, IL 60517
630.724.9200 phone
630.724.9202 fax
www.v3co.com

USER NAME = cdonahue	DESIGNED - _____	REVISED - _____	REVISED - _____
	DRAWN - _____	REVISED - _____	REVISED - _____
PLOT SCALE =	CHECKED - _____	REVISED - _____	REVISED - _____
PLOT DATE = 8/29/2024	DATE - _____	REVISED - _____	REVISED - _____

SITE BENCHMARK #3304:
 ELEVATION 796.451
 NORTHEAST BOLT OF FIRE HYDRANT
 NORTH SIDE OF PARKING LOT,
 SOUTHWEST CORNER OF CORPORATE
 CENTER BUILDING
 N: 1964581.956
 E: 1037656.446

N: 1964564.625
 E: 1037643.464

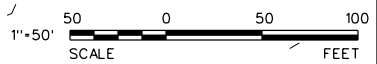
N: 1964111.151
 E: 1037641.733
 POT STA 1007+17.07

N: 1964064.054
 E: 1037623.546

SITE BENCHMARK #1466:
 ELEVATION 795.074
 NORTHWEST BOLT OF FIRE HYDRANT,
 EAST SIDE OF ANIMAL HOSPITAL,
 NORTH SIDE OF LFT STATION
 N: 1963867.126
 E: 1037093.891

N: 1963848.422
 E: 1037125.990

N: 1963849.923
 E: 1037525.148



MODEL: Default
 FILE NAME: N:\230272\Drawings\Main\CADD_Sheets\1230272-sha-A73.dgn

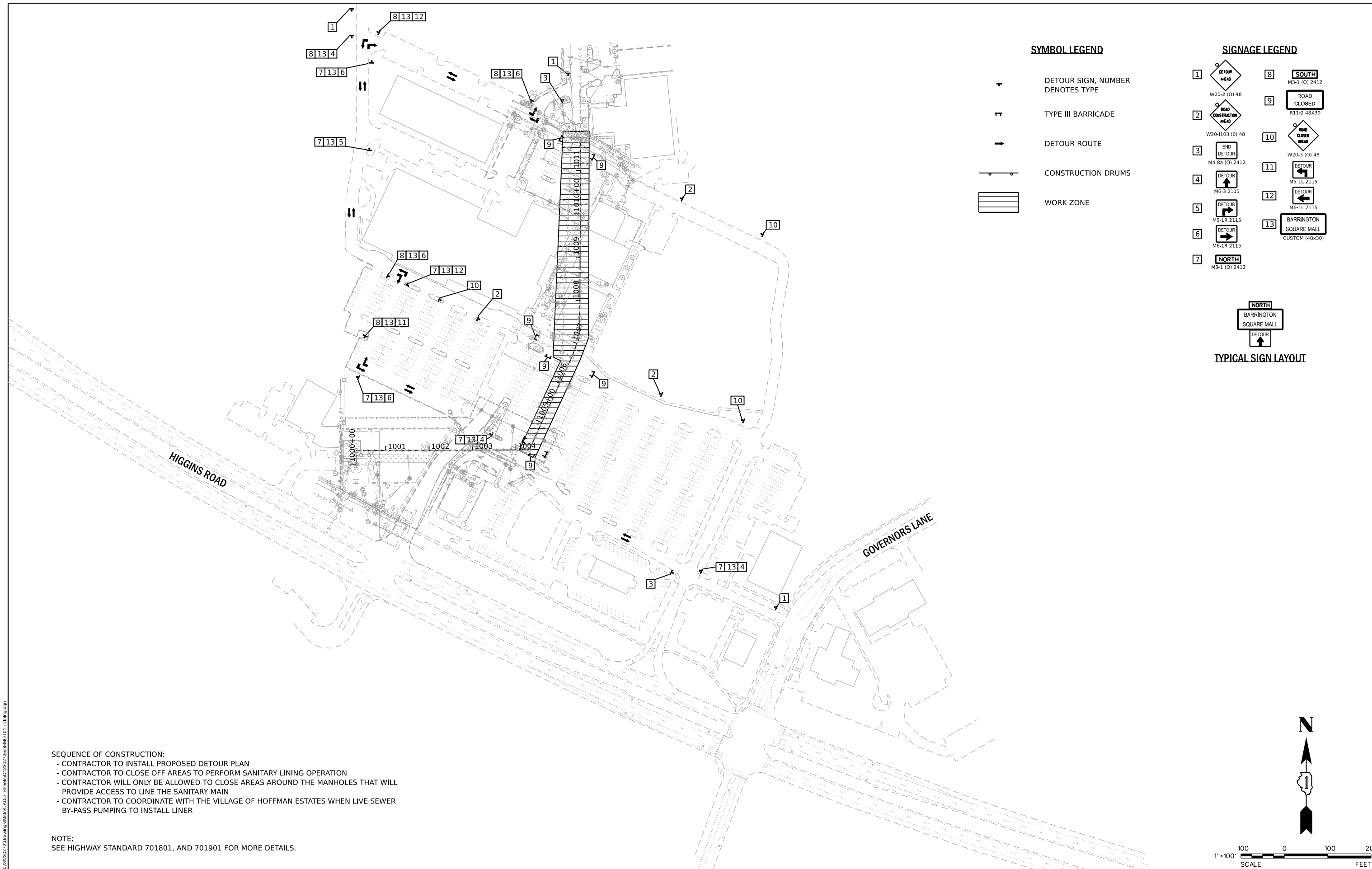
V3 Companies
 7325 Janes Avenue
 Woodridge, IL 60517
 630.724.9200 phone
 630.724.9202 fax
 www.v3co.com

USER NAME = cdonahue	DESIGNED -	REVISD -	REVISD -
PLOT SCALE =	DRAWN -	REVISD -	REVISD -
PLOT DATE = 8/29/2024	CHECKED -	REVISD -	REVISD -
	DATE -	REVISD -	REVISD -

**PROPOSED SANITARY SEWER REHABILITATION
 BARRINGTON SQUARE TOWN CENTER**

ILLINOIS
 SCALE: 1"=50'
 SHEET 1 OF 1 SHEETS
 STA. TO STA.

COUNTY	TOTAL SHEETS	SHEET NO.
COOK	11	4
PROJECT NO. 230272		

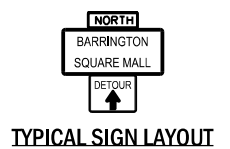


SYMBOL LEGEND

- DETOUR SIGN, NUMBER DENOTES TYPE
- TYPE III BARRICADE
- DETOUR ROUTE
- CONSTRUCTION DRUMS
- WORK ZONE

SIGNAGE LEGEND

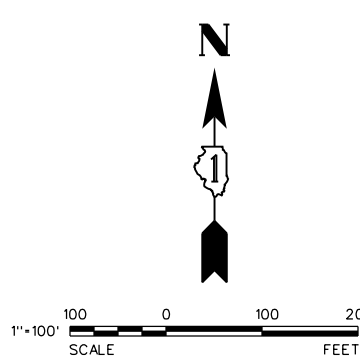
- 1 DETOUR AHEAD
- 2 ROAD CONSTRUCTION AHEAD
- 3 END DETOUR
- 4 DETOUR
- 5 DETOUR
- 6 DETOUR
- 7 NORTH
- 8 SOUTH
- 9 ROAD CLOSED
- 10 ROAD CLOSED AHEAD
- 11 DETOUR
- 12 DETOUR
- 13 BARRINGTON SQUARE MALL



SEQUENCE OF CONSTRUCTION:

- CONTRACTOR TO INSTALL PROPOSED DETOUR PLAN
- CONTRACTOR TO CLOSE OFF AREAS TO PERFORM SANITARY LINING OPERATION
- CONTRACTOR WILL ONLY BE ALLOWED TO CLOSE AREAS AROUND THE MANHOLES THAT WILL PROVIDE ACCESS TO LINE THE SANITARY MAIN
- CONTRACTOR TO COORDINATE WITH THE VILLAGE OF HOFFMAN ESTATES WHEN LIVE SEWER BY-PASS PUMPING TO INSTALL LINER

NOTE:
SEE HIGHWAY STANDARD 701801, AND 701901 FOR MORE DETAILS.



MODEL: Default
 FILE NAME: N:\230272\Drawings\Main\CADD_Sheets\1230272-sha-MOT01 - Lift.dgn

	V3 Companies 7325 Janes Avenue Woodridge, IL 60517 630.724.9200 phone 630.724.9202 fax www.v3co.com	USER NAME = cdonahue DESIGNED - _____ DRAWN - _____ PLOT SCALE = _____ PLOT DATE = 8/29/2024	DESIGNED - _____ DRAWN - _____ CHECKED - _____ DATE - _____	REVISED - _____ REVISED - _____ REVISED - _____ REVISED - _____	REVISED - _____ REVISED - _____ REVISED - _____ REVISED - _____	PROPOSED SANITARY SEWER REHABILITATION BARRINGTON SQUARE TOWN CENTER	DETOUR PLAN	COUNTY TOTAL SHEETS SHEET NO. COOK 11 5	PROJECT NO. 230272
	HOFFMAN ESTATES ILLINOIS	SCALE: 1"=100'	SHEET 1 OF 1 SHEETS	STA. 100+00.00 TO STA. 100+00.00					

MODEL: Default
 FILE NAME: N:\230272\Drawings\Main\CADD_Sheets\1230272-shh-e-02.dgn



V3 Companies
 7325 Janes Avenue
 Woodridge, IL 60517
 630.724.9200 phone
 630.724.9202 fax
 www.v3co.com

USER NAME = cdonahue
 PLOT SCALE =
 PLOT DATE = 8/29/2024

DESIGNED -
 DRAWN -
 CHECKED -
 DATE -

REVISED -
 REVISED -
 REVISED -
 REVISED -

REVISED -
 REVISED -
 REVISED -
 REVISED -

**PROPOSED SANITARY SEWER REHABILITATION
 BARRINGTON SQUARE TOWN CENTER**

HOFFMAN ESTATES

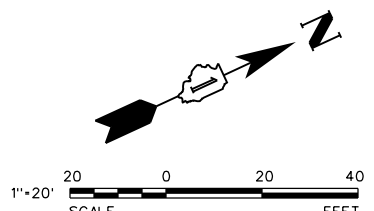
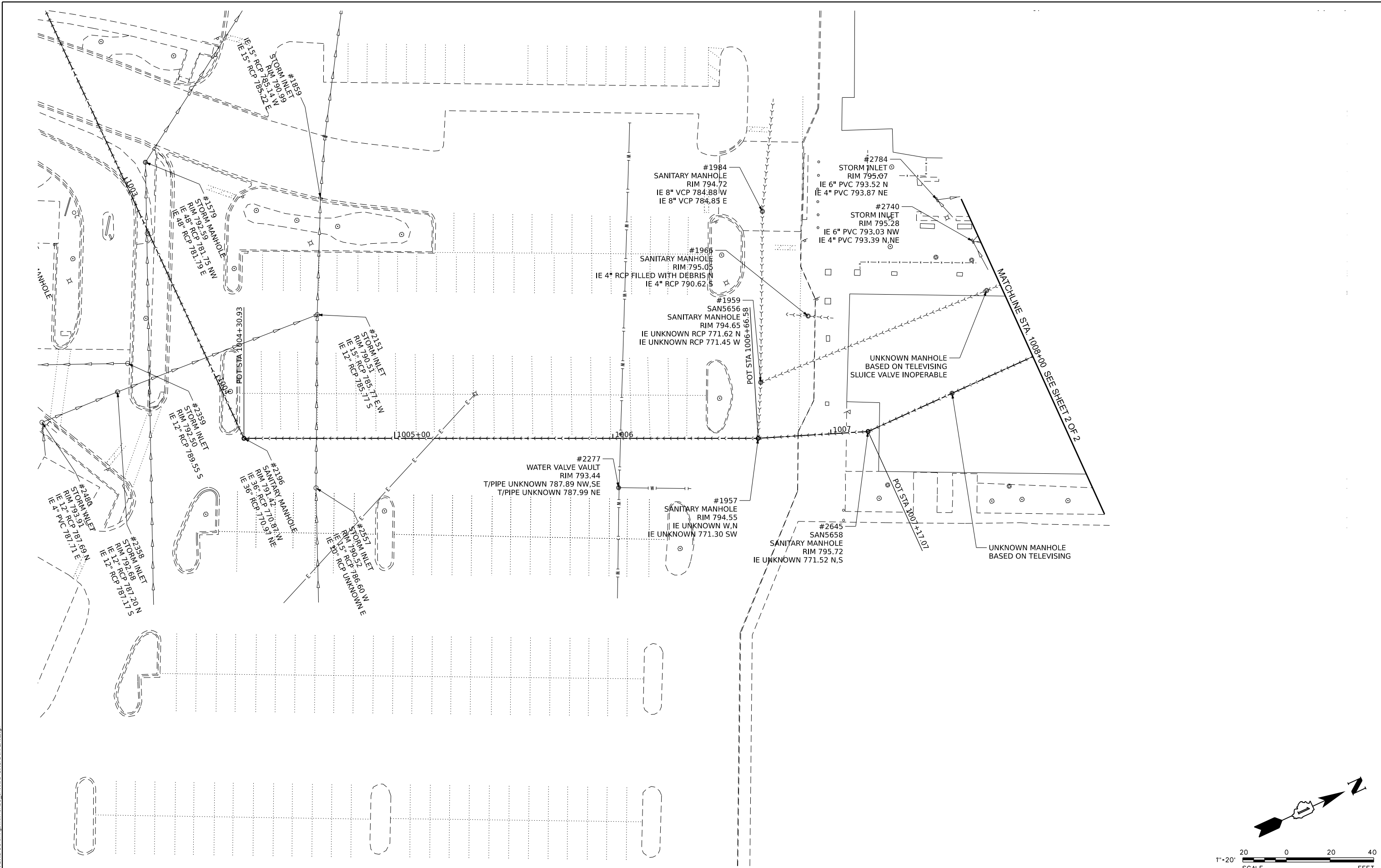
ILLINOIS

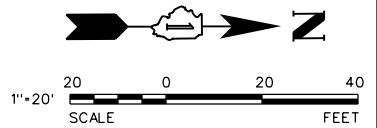
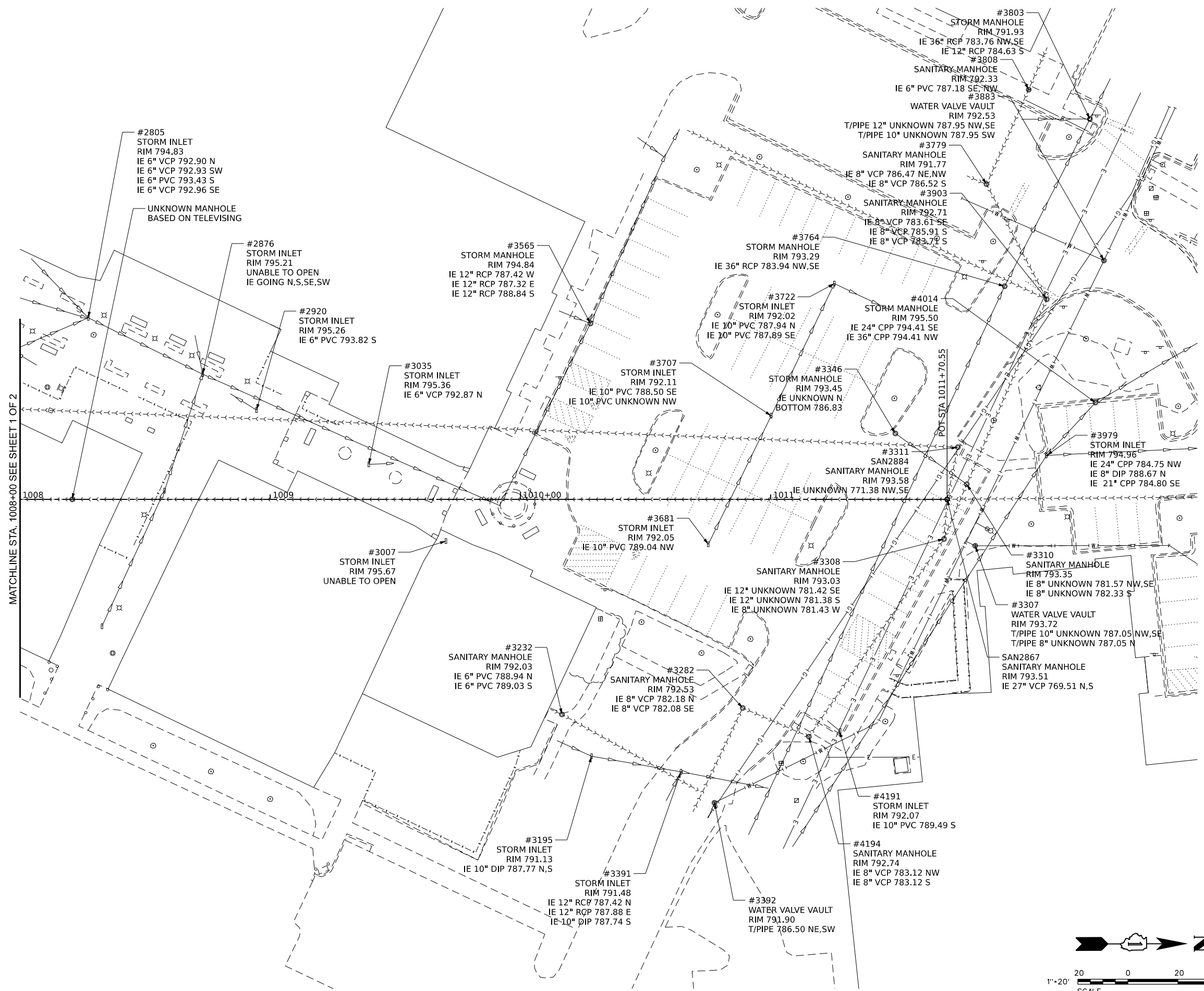
EXISTING CONDITIONS

SCALE: 1"=20' SHEET 1 OF 2 SHEETS STA. 1005+00.00 TO STA. 1008+00.00

COUNTY	TOTAL SHEETS	SHEET NO.
COOK	11	6

PROJECT NO. 230272





V3 Companies
7325 Janes Avenue
Woodridge, IL 60517
630.724.9200 phone
630.724.9202 fax
www.v3co.com

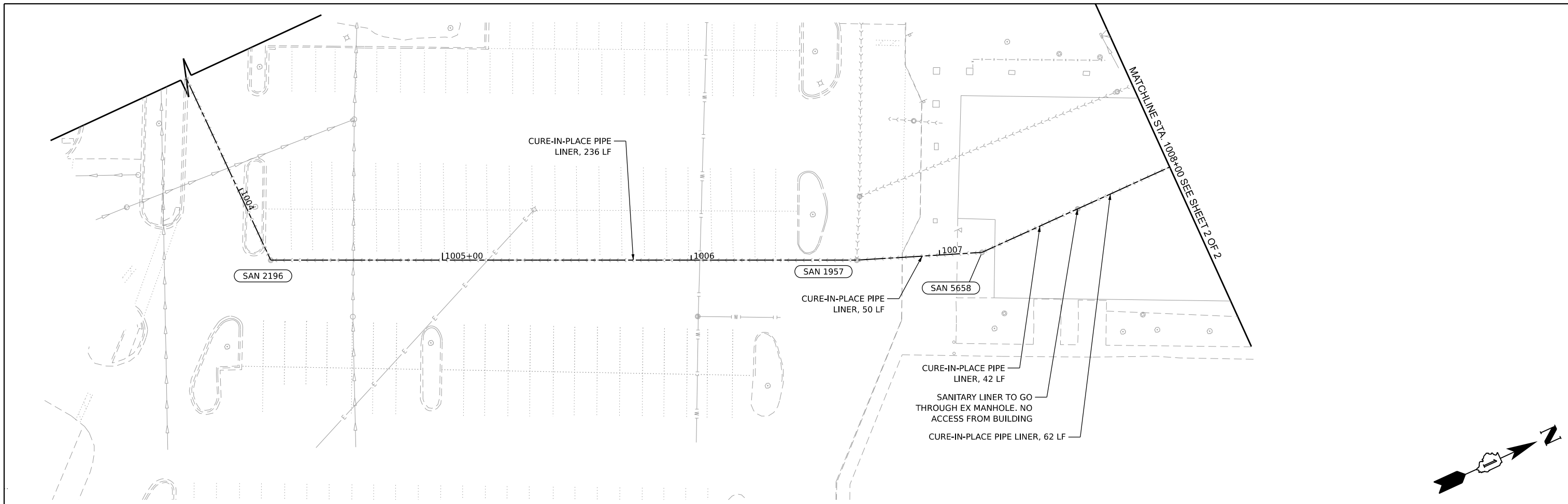
USER NAME = cdonahue	DESIGNED -	REVISED -	REVISED -
DRAWN -	REVISED -	REVISED -	REVISED -
PLOT SCALE =	CHECKED -	REVISED -	REVISED -
PLOT DATE = 8/29/2024	DATE -	REVISED -	REVISED -

**PROPOSED SANITARY SEWER REHABILITATION
BARRINGTON SQUARE TOWN CENTER**

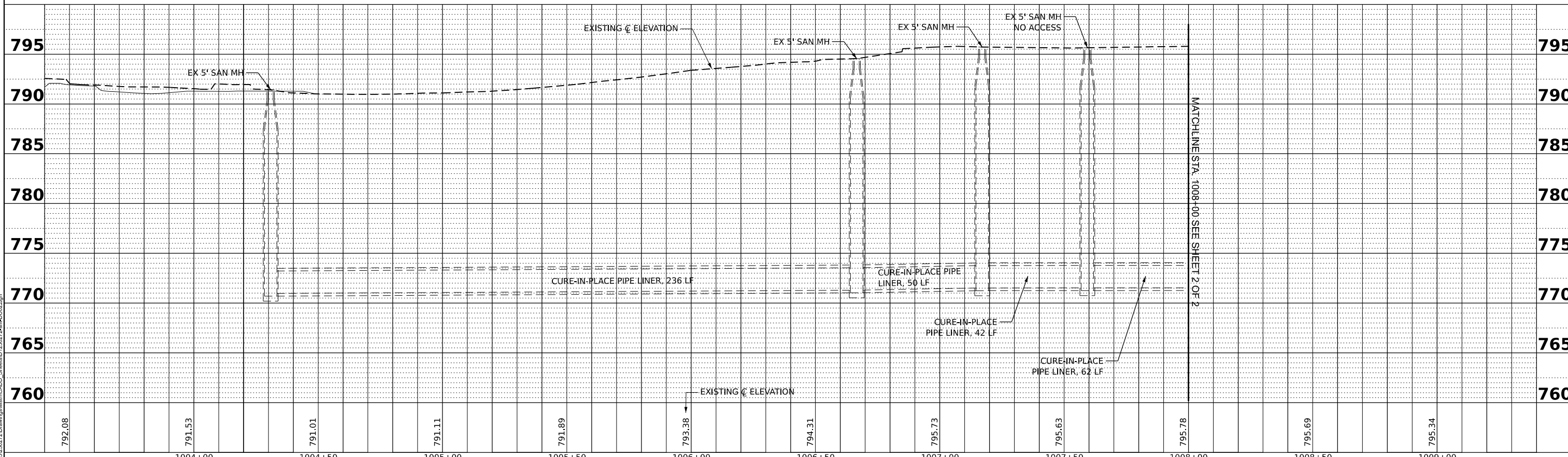
ILLINOIS	SCALE: 1"=20'	SHEET 2 OF 2 SHEETS	STA. 1008+00.00 TO STA. 1011+70.55
----------	---------------	---------------------	------------------------------------

EXISTING CONDITIONS		COUNTY	TOTAL SHEETS	SHEET NO.
		COOK	11	7
		PROJECT NO. 230272		

MODEL: Default
FILE NAME: N:\230272\Drawings\Main\CADD_Sheets\1230272-ss-h-03.dgn



NOTE: STATIONING AND PROFILE VIEW ARE BASED ON THE EXISTING SANITARY MAINLINE



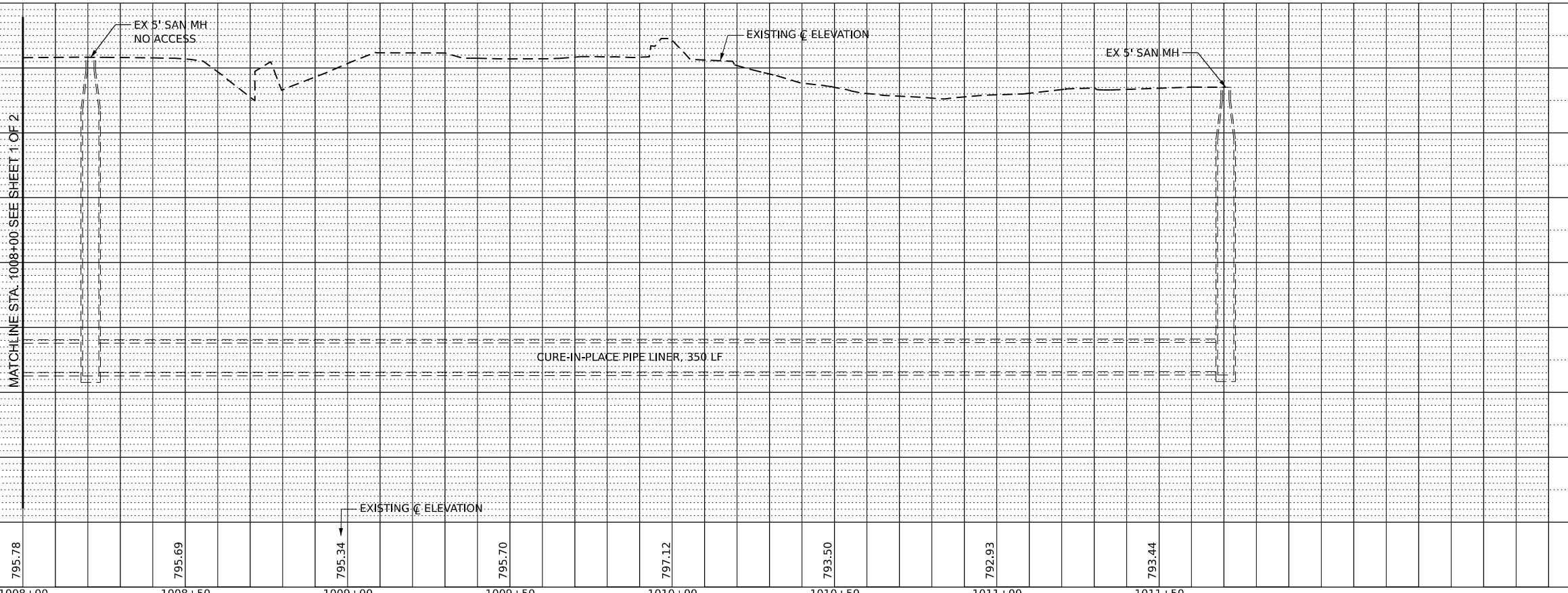
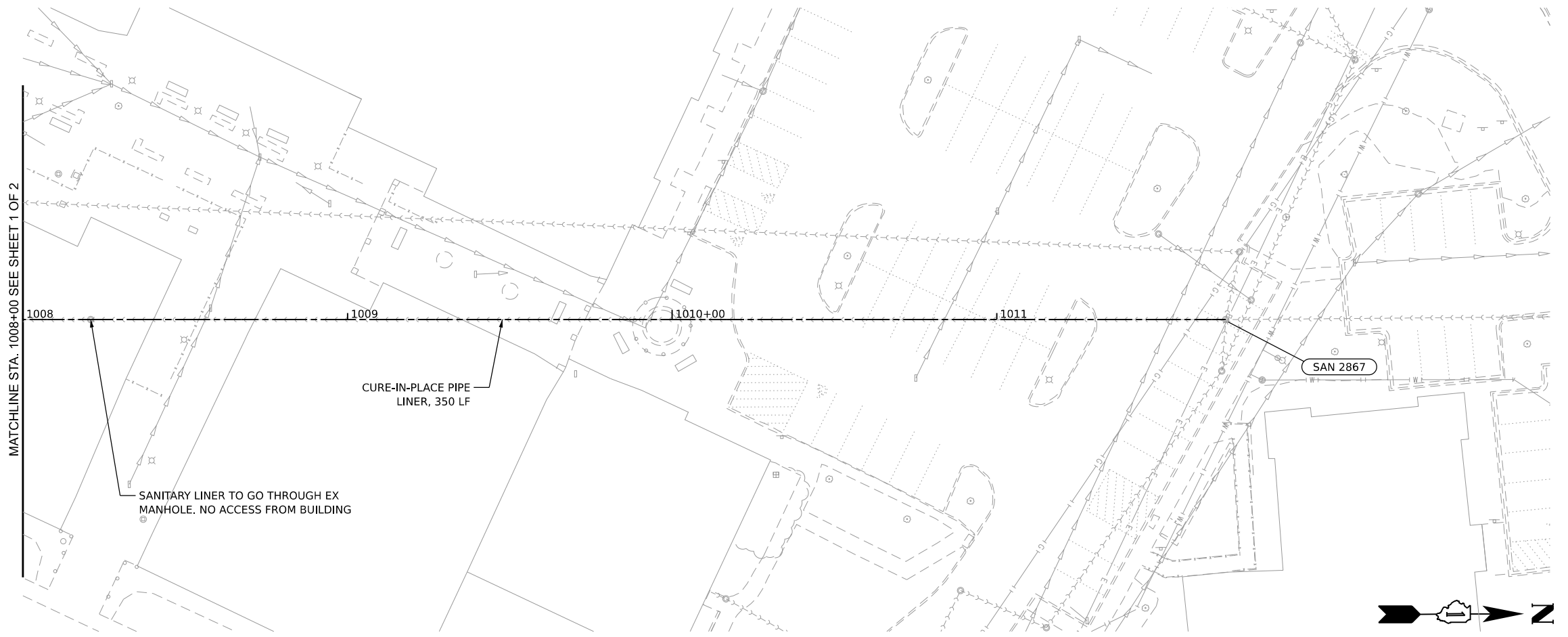
MODEL: Default
FILE NAME: N:\230272\Drawings\Main\CADD_Sheets\1230272\sheet102.dgn

792.08	791.53	791.01	791.11	791.89	791.38	794.31	795.73	795.63	795.78	795.69	795.34
1004+00	1004+50	1005+00	1005+50	1006+00	1006+50	1007+00	1007+50	1008+00	1008+50	1009+00	
DESIGNED -	DESIGNED -	DESIGNED -	DESIGNED -	DESIGNED -	DESIGNED -	DESIGNED -	DESIGNED -	DESIGNED -	DESIGNED -	DESIGNED -	DESIGNED -
DRAWN -	DRAWN -	DRAWN -	DRAWN -	DRAWN -	DRAWN -	DRAWN -	DRAWN -	DRAWN -	DRAWN -	DRAWN -	DRAWN -
CHECKED -	CHECKED -	CHECKED -	CHECKED -	CHECKED -	CHECKED -	CHECKED -	CHECKED -	CHECKED -	CHECKED -	CHECKED -	CHECKED -
DATE -	DATE -	DATE -	DATE -	DATE -	DATE -	DATE -	DATE -	DATE -	DATE -	DATE -	DATE -
USER NAME = cdonahue	DESIGNED -	REVISD -	REVISD -	REVISD -	REVISD -	REVISD -	REVISD -	REVISD -	REVISD -	REVISD -	REVISD -
PLOT SCALE =	CHECKED -	REVISD -	REVISD -	REVISD -	REVISD -	REVISD -	REVISD -	REVISD -	REVISD -	REVISD -	REVISD -
PLOT DATE = 8/29/2024	DATE -	REVISD -	REVISD -	REVISD -	REVISD -	REVISD -	REVISD -	REVISD -	REVISD -	REVISD -	REVISD -

**PROPOSED SANITARY SEWER REHABILITATION
BARRINGTON SQUARE TOWN CENTER**

DRAINAGE & UTILITY PLAN

ILLINOIS COUNTY TOTAL SHEETS SHEET NO. COOK 11 8 PROJECT NO. 230272
SCALE: 1"=20' SHEET 1 OF 2 SHEETS STA. 1005+00.00 TO STA. 1008+00.00



V3 Companies
 7325 Janes Avenue
 Woodridge, IL 60517
 630.724.9200 phone
 630.724.9202 fax
 www.v3co.com

USER NAME = cdonahue
 PLOT SCALE =
 PLOT DATE = 8/29/2024

DESIGNED -
 DRAWN -
 CHECKED -
 DATE -

REVISED -
 REVISED -
 REVISED -
 REVISED -

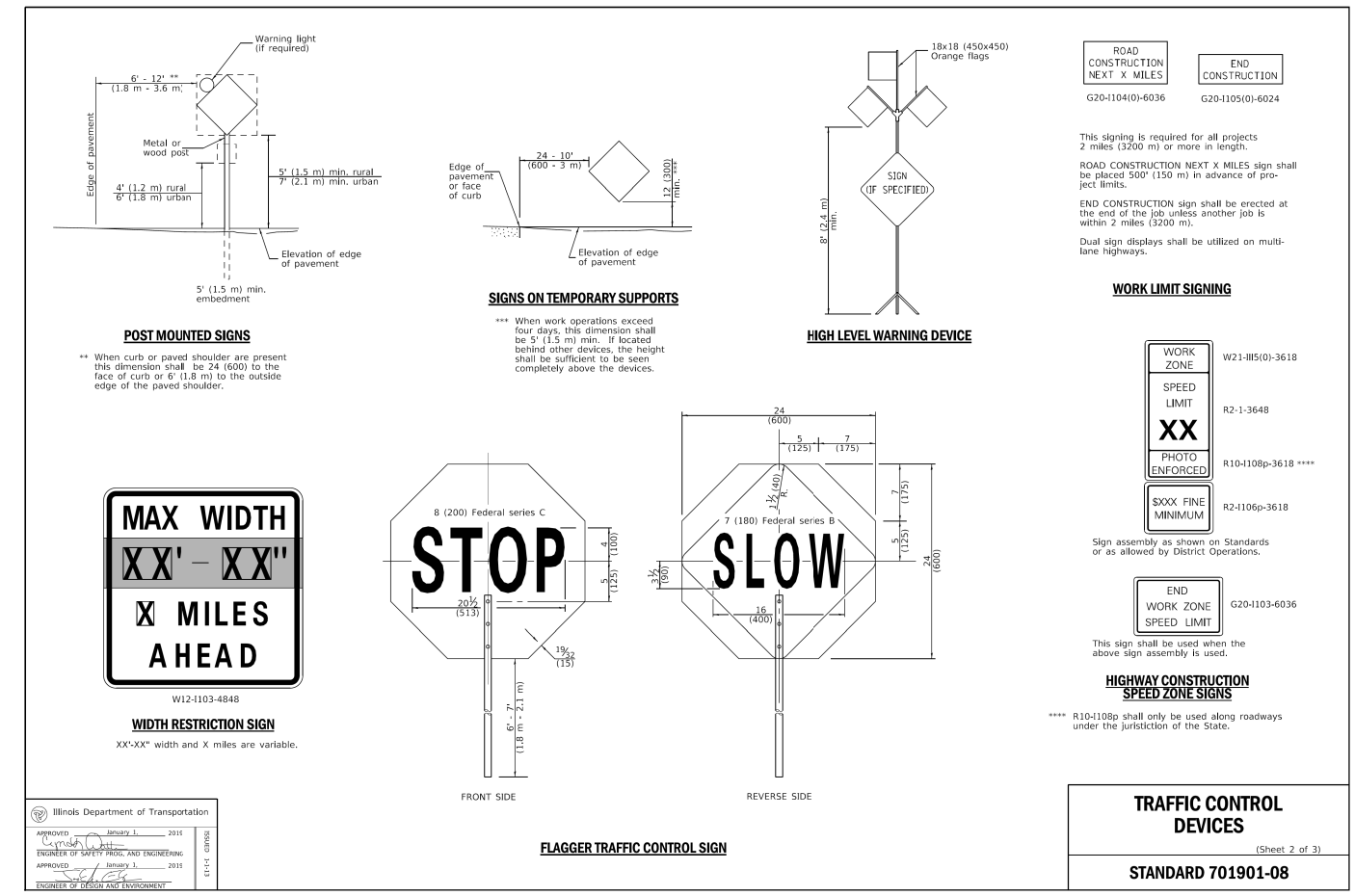
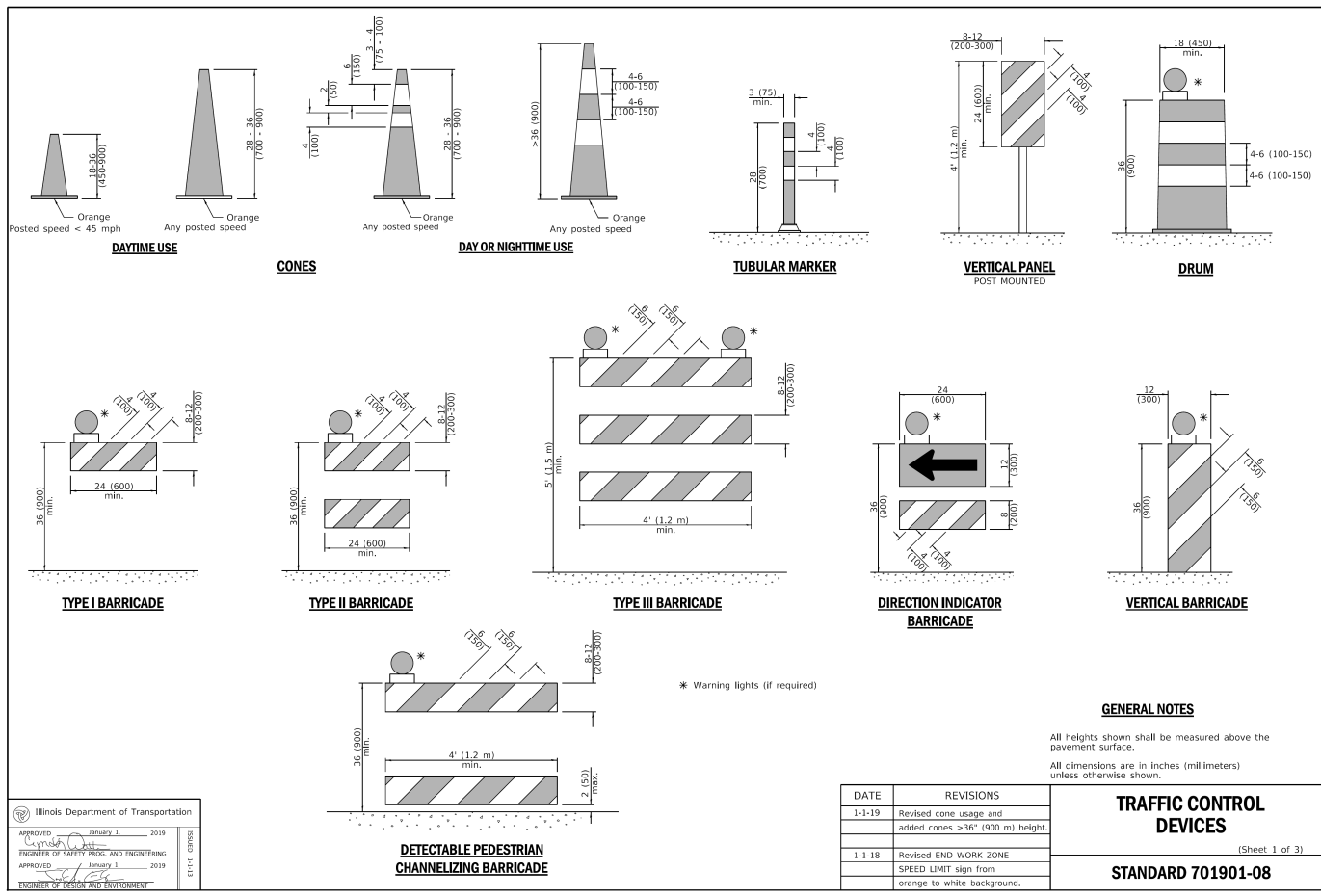
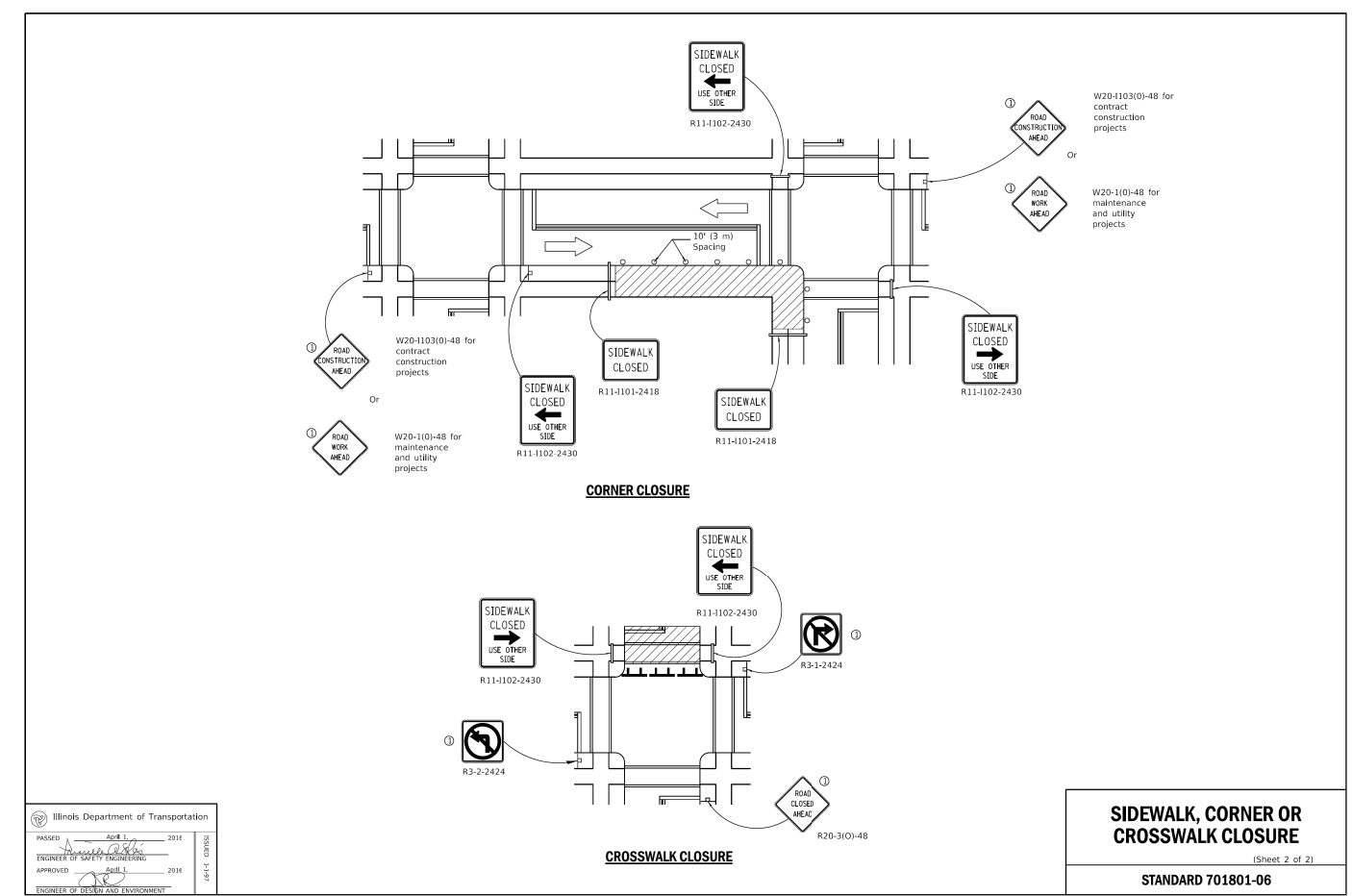
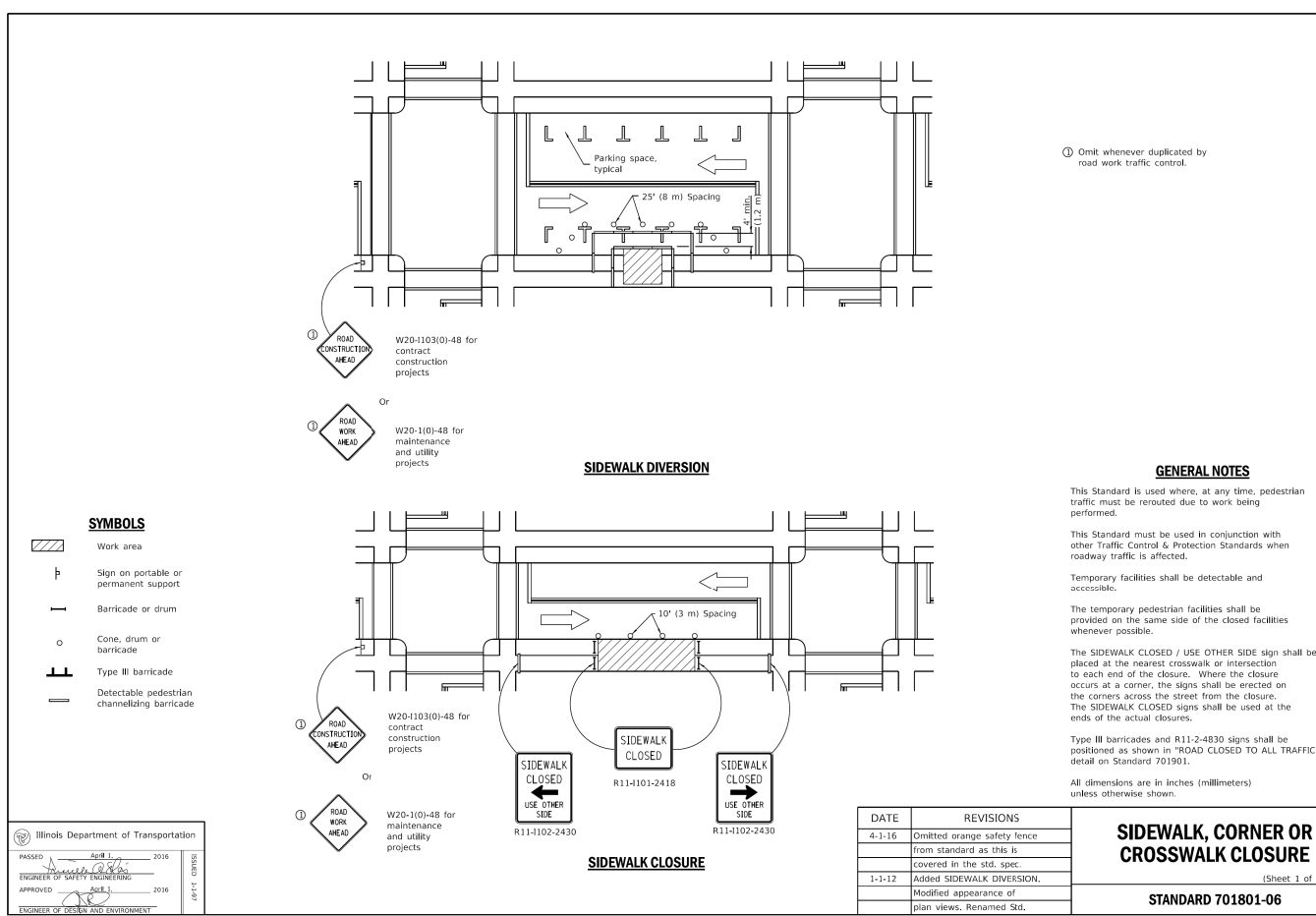
REVISED -
 REVISED -
 REVISED -
 REVISED -

PROPOSED SANITARY SEWER REHABILITATION
BARRINGTON SQUARE TOWN CENTER
 HOFFMAN ESTATES

ILLINOIS
 SCALE: 1"=20'
 SHEET 2 OF 2 SHEETS
 STA. 1008+00.00 TO STA. 1011+70.55

COUNTY	TOTAL SHEETS	SHEET NO.
COOK	11	9
PROJECT NO. 230272		

MODEL: Default
 FILE NAME: N:\230272\Drawings\Main\CADD_Sheets\1230272-sh-hd\03.dgn



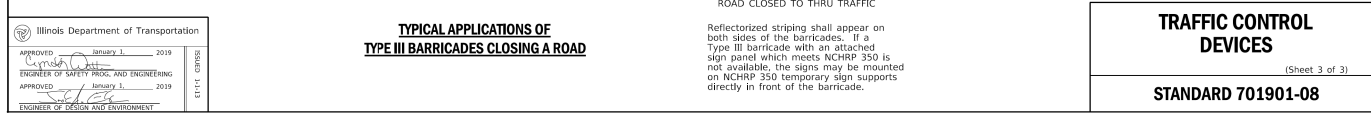
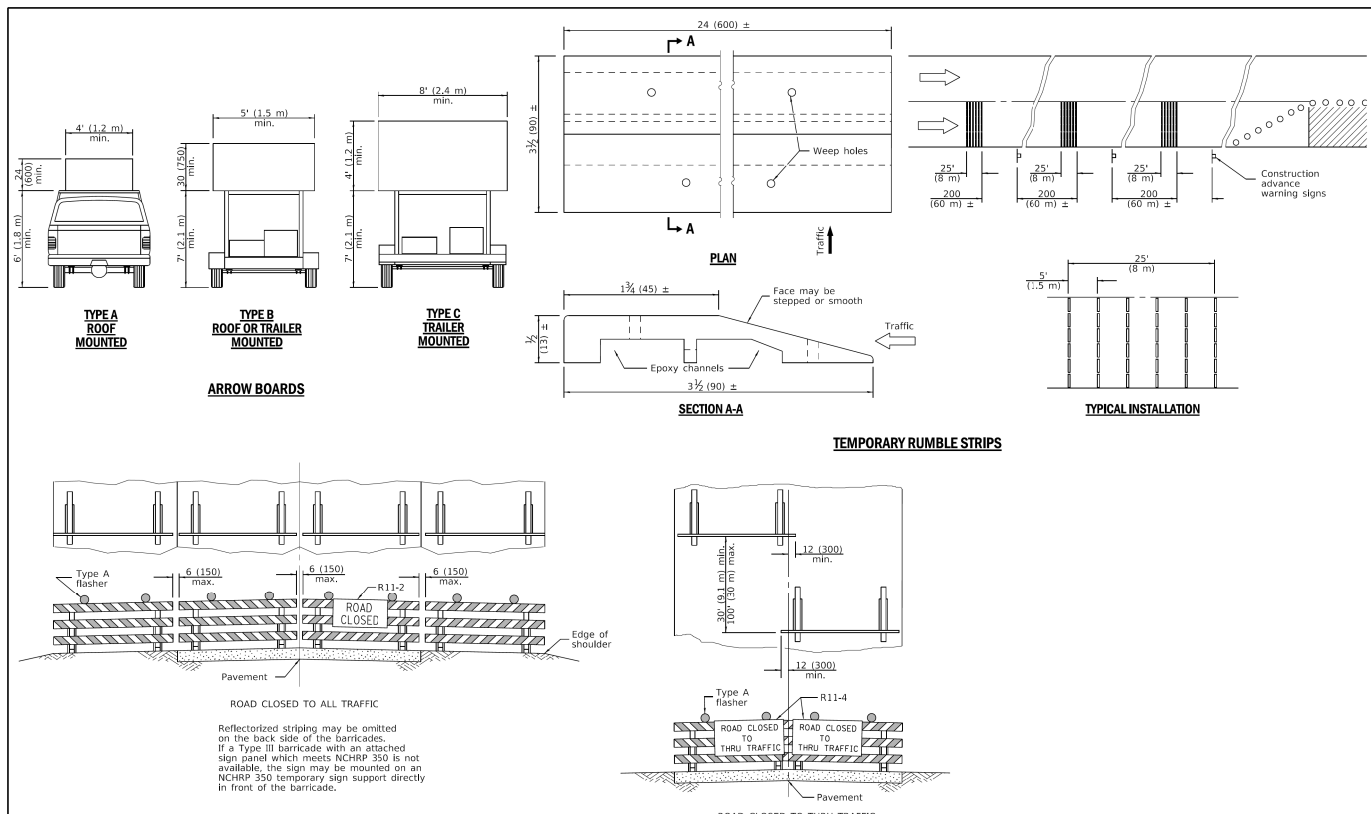
MODEL: Default
FILE NAME: N:\230272\Drawings\Main\CADD_SheetID:230272-shd-DETAILS - 1.dwg

V3 Companies
7325 Janes Avenue
Woodridge, IL 60517
630.724.9200 fax
630.724.9202 fax
www.v3co.com

USER NAME = cdonahue	DESIGNED -	REVISED -	REVISED -
PLOT SCALE =	DRAWN -	REVISED -	REVISED -
PLOT DATE = 8/29/2024	CHECKED -	REVISED -	REVISED -
	DATE -	REVISED -	REVISED -

PROPOSED SANITARY SEWER REHABILITATION
BARRINGTON SQUARE TOWN CENTER
ILLINOIS

SCALE:	SHEET 1 OF 2 SHEETS	STA. TO STA.	COUNTY	TOTAL SHEETS	SHEET NO.
			COOK	11	10
			PROJECT NO. 230272		



TRAFFIC CONTROL DEVICES
(Sheet 3 of 3)
STANDARD 701901-08

Illinois Department of Transportation
APPROVED January 1, 2019
L. V. COOK
ENGINEER OF SAFETY, TRAFFIC AND ENGINEERING
APPROVED January 1, 2019
ENGINEER OF DESIGN AND ENVIRONMENT

MODEL: Default
FILE NAME: N:\230272\Drawings\Main\CADD_Sheets\230272-shd-DETAILS - 1.dwg

V3 Companies
7325 Janes Avenue
Woodridge, IL 60517
630.724.9200 phone
630.724.9202 fax
www.v3co.com

USER NAME = cdonahue	DESIGNED - _____	REVISED - _____	REVISED - _____
PLOT SCALE =	DRAWN - _____	REVISED - _____	REVISED - _____
PLOT DATE = 8/29/2024	CHECKED - _____	REVISED - _____	REVISED - _____
	DATE - _____	REVISED - _____	REVISED - _____

PROPOSED SANITARY SEWER REHABILITATION BARRINGTON SQUARE TOWN CENTER		DETAILS		COUNTY	TOTAL SHEETS	SHEET NO.
HOFFMAN ESTATES		ILLINOIS		COOK	11	11
SCALE:	SHEET 2 OF 2 SHEETS	STA.	TO STA.	PROJECT NO. 230272		